



**Bonfiglioli**

*Forever Forward*

# Product Range

Discrete Manufacturing & Process Industries



DISCRETE MANUFACTURING & PROCESS INDUSTRIES



# Discrete Manufacturing & Process Industries



## Industrial Gearboxes

- A series
- C series
- F series
- S series
- VF W series
- VF-EP/W-EP series
- 300M Series
- 3/H series
- HDO series
- HDP series
- HDPE series

## Electric Motors

- BN/M series
- BE/ME series
- BX/MX series
- BX Heavy Duty Series
- BSR series



MEET OUR CUSTOMERS' NEEDS



WORLDWIDE DISTRIBUTION NETWORK



IMPROVE APPLICATION PERFORMANCE

## A One-Stop shop for all your industrial applications

Every year, Bonfiglioli manufactures over 1.5 million products offering its customers fully integrated and solutions, ideal for a wide range of applications in over twenty industrial sectors.

The Discrete Manufacturing & Process Industries business unit offers gearboxes, geared motors and electric motors for any industrial applications. From fractional power to a few hundred Kw, our experts are able to address the most sophisticated requests for applications working in all conditions.

Thanks to over 60 years of experience by our customers'side, today we are able to anticipate their needs in more than twenty different industries, focusing on industrial processes and discrete manufacturing machineries such as packaging, food & beverage, mining, logistics and intralogistics.

Bonfiglioli also provides solutions for:



ELECTROMOBILITY



MECHATRONIC & MOTION SYSTEMS



MOBILE



WIND

[www.bonfiglioli.com](http://www.bonfiglioli.com)



## Always by our customer's side, all over the world



Our worldwide reach always puts us where our customers need us. We believe that deep understanding of application requirements — both technical and environmental — make the difference in providing the right products in a timely manner.



LEAN  
MANUFACTURING



INDUSTRY 4.0



FAST DELIVERY  
TIMES



WORLDWIDE  
PRESENCE

Bonfiglioli has globalized production over the years. Today, we operate 14 manufacturing plants around the world to serve customers in local markets more effectively. Our plants in Italy, Germany, USA, Brazil, India, China, Vietnam, and Slovakia form a truly efficient distribution network.

Excellence is our number one priority.

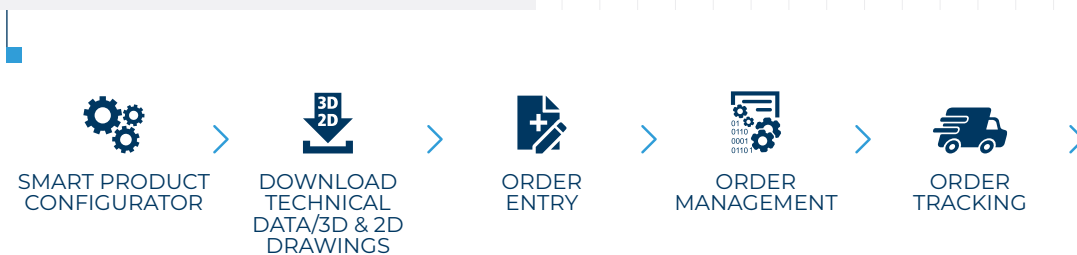
We use the latest technologies to optimize our daily production. Bonfiglioli is fully committed to a more sustainable workplace and supports various local initiatives.

All Bonfiglioli employees pay the utmost attention to even the smallest details, to ensure that our customers receive products with unrivalled quality.

# Configure your product on Mosaico



Mosaico is Bonfiglioli's e-business platform created to facilitate customers purchases and product configuration. Fully integrated with Bonfiglioli product database, it offers more flexibility to configure a solution and track orders.



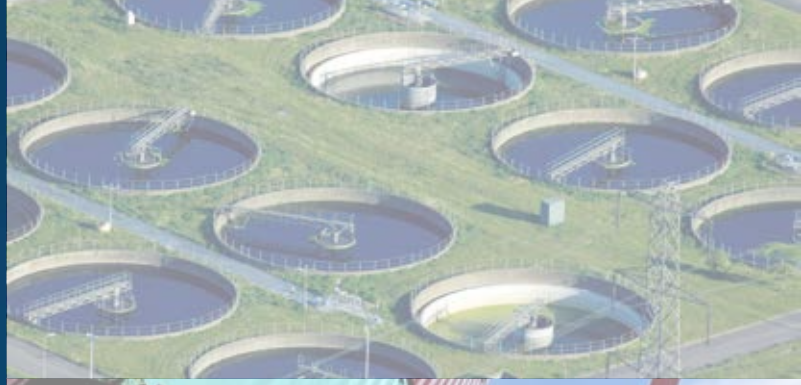
## A complete e-business platform to be the master of your solutions

Mosaico guides customers, distributors and agents through the process of selecting the right product for their specific needs and also gives support for design activities and orders' management. The system greatly accelerates the product selection and ordering process and also guarantees improved security and accuracy.

Thanks to web-based technology, customers can keep in touch with Bonfiglioli's technical service 24 hours a day, 365 days a year, from anywhere around the world. Registered customers have access to constantly updated technical specifications and drawings, specifically created for the exact product designation they need. This service provides users with on-line assistance to support them with:

- Configure Bonfiglioli products
- Download technical datas/drawings in 3D and 2D
- Benefit from Bonfiglioli's help during products' selection

# Industry Specific Solutions



# Create solutions dedicated to diverse industries



Bonfiglioli develops complete industrial solutions that are tailored to meet exact application requirements. Thanks to our decades of experience, we have the specific industry expertise to assist our customers with any kind of projects using tailor-made solutions.



FOOD, BEVERAGE & TOBACCO



MATERIAL HANDLING



MINING



PACKAGING



RECYCLING



SUGAR CANE



WATER & WASTE WATER TREATMENT



CONCRETE PROCESSES



ASPHALT PLANT



CEMENT PLANT

## Other sectors:

- Biogas
- Rubber and plastics
- Metal processing
- Access control
- Commercial HVAC and refrigeration
- Logistics and Stocking systems
- Oil and gas
- Power generation
- Stone, clay and glass

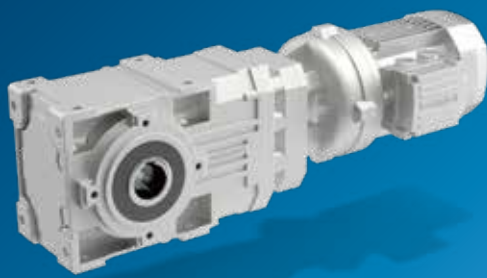


# Industrial Gearboxes





# Helical Bevel Gearmotors & Units



## A Series

The A Series combines high efficiency and reliability, low maintenance costs and a wide torque range. The right angle layout between INPUT and OUTPUT makes the A Series particularly compact. The gear set combination makes this right-angle product the most efficient and durable in Bonfiglioli's light- and medium-duty portfolio.



ATEX GEARBOX AVAILABLE

### Gear ratios

- 4.9 ... 1,715

### Mechanical rating

- 0.22 ... 150 kW

### Motors

- Input with solid shaft
- Input with e-motor coupling:
  - M, ME, MX (compact asynchronous)
  - BMD (servo permanent magnet)
  - BSR (IEC reluctance)
  - BN, BE, BX (IEC asynchronous)
  - BS (IEC single phase)

### Motor options

- Thermistors and thermostat sensors
- Independent forced cooling
- Incremental, sin/cos absolute single/multi-turn encoders
- Tropicalization
- Anti-condensation heaters
- Backstop

### Main options

- Surface protection up to C5
- Reinforced bearings
- Reduced backlash
- Torque arm
- Fluoroelastomer oil seals
- Double oil seasonal input
- Taconite seals

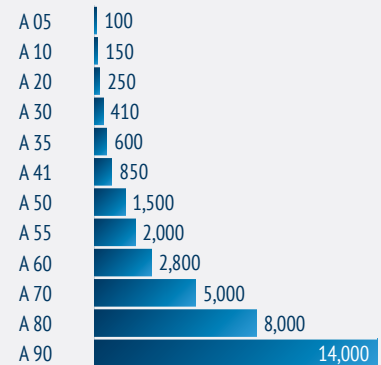
### Key benefits

- Minimized mounting space
- Reduced installation space and wide output speed selection range
- Reduced standard backlash
- Highly dynamic, energy-saving solution
- Wide output speed selection range
- Gearboxes can operate safely in explosive environments

### Key features

- Right-angle input-output
- Compact motor coupling
- Forced gears-shafts coupling
- Servomotor coupling
- Wide ratio range (4 stages)
- Atex - gearbox for explosive environments 2G/2D

### Torque (Nm)



# In-line Gearmotors & Units



## C Series

The C Series is designed for the requirements of standard tasks in the industrial environment. These series achieve first-rate reliability, efficiency, robustness, and a wide output torque range. The extremely wide range of gear ratios, achieved through 2-, 3- or 4-stage versions, allows the customer to adapt the C Series to every application and to find the perfect match for output speed requirements.



ATEX GEARBOX AVAILABLE

### Gear ratios

- 2.6 ... 1,481

### Mechanical rating

- 0.09 ... 213 kW

### Motors

- Input with solid shaft
- Input with e-motor coupling:
  - M, ME, MX (compact asynchronous)
  - BMD (servo permanent magnet)
  - BSR (IEC reluctance)
  - BN, BE, BX (IEC asynchronous)
  - BS (IEC single phase)

### Motor options

- Thermistors and thermostat sensors
- Independent forced cooling
- Incremental, sin/cos absolute single/multi-turn encoders
- Tropicalization
- Anti-condensation heaters
- Backstop

### Main options

- Long-life lubrication (sizes from 16 to 35)
- Gearbox supplied with oil (sizes from 45 to 100)
- Fluoroelastomer oil seals

### Key benefits

- Cost-effective solution
- Minimized mounting space
- Easy maintenance
- Operation in a high-temperature environment
- High resistance to external hits
- Pure coaxial torque transmission

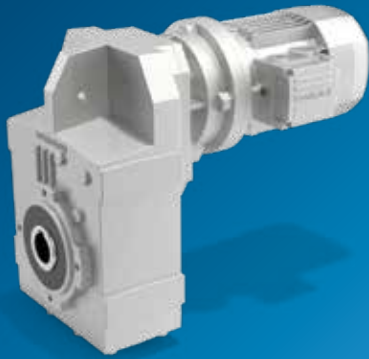
### Key features

- Space-optimized design
- Compact motor coupling
- Unibox housing
- Forced gear-shafts coupling
- Servomotor coupling
- Wide ratio range (4 stages)
- Atex- gearbox for explosive environments 2G/2D

### Torque (Nm)

C 05	45
C 12	100
C 22	200
C 32	300
C 36	450
C 41	600
C 51	1,000
C 61	1,600
C 70	2,300
C 80	4,000
C 90	7,200
C 100	12,000

# Helical Parallel-Shaft Gearmotors & Units



## F Series

The F Series is an outstanding solution for customers looking for a drive that can maximize mounting flexibility. Thanks to the housing's lateral holes, the F Series can also be side mounted directly into the machine, in addition to all the conventional mounting positions. This gearmotor guarantees elevated efficiency, reliability and low-noise operation. High torque density, a range of wide gear ratios and a compact design complete the F Series' characteristics.



ATEX GEARBOX AVAILABLE

### Gear ratios

- 6.4 ... 2,099

### Mechanical rating

- 0.09 ... 123 kW

### Motors

- Input with solid shaft
- Input with e-motor coupling:
  - M, ME, MX (compact asynchronous)
  - BMD (servo permanent magnet)
  - BSR (IEC reluctance)
  - BN, BE, BX (IEC asynchronous)
  - BS (IEC single phase)

### Motor options

- Thermistors and thermostat sensors
- Independent forced cooling
- Incremental, sin/cos absolute single/multi-turn encoders
- Tropicalization
- Anti-condensation heaters
- Backstop

### Main options

- Long-life lubrication (Sizes from 10 to 40)
- Gearbox supplied with oil (Size 50)
- Surface protection up to C5
- Fluoroelastomer oil seals

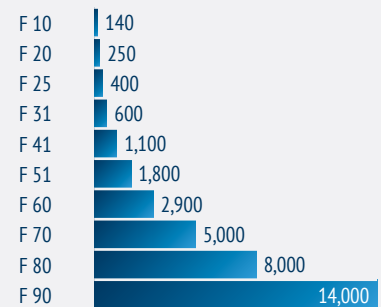
### Key benefits

- Cost-effective solution
- Minimized mounting space
- Robustness
- Reduced standard backlash
- Highly dynamic, energy-saving solution

### Key features

- Lateral holes for side mounting
- Space-optimized design
- Compact motor coupling
- Unibox housing
- Forced gearshaft coupling
- Servomotor coupling
- Wide ratio range (4 Stages)
- Atex - gearbox for explosive environments 2G/2D

### Torque (Nm)



# Helical Single-Stage



## S Series

The S Series design makes this gearmotor particularly effective for pump, fan and blower applications. To meet the needs of customers in these sectors, the S Series is also available in the foot or flange versions and can be completed with a wide range of electric motors entirely manufactured by Bonfiglioli. Asynchronous motors both IEC and compact (B-BE-BX/M-ME-MX), servomotors (BMD) and reluctance motors (BSR) can be coupled with the S Series. With the breadth of its portfolio, Bonfiglioli provides customers with an outstanding balance of efficiency, dynamics and cost effectiveness.

### Gear ratios

- 1.4 ... 13.1

### Mechanical rating

- 0.09 ... 11.6 kW

### Motors

- Input with solid shaft
- Input with e-motor coupling:
  - M, ME, MX (compact asynchronous)
  - BSR (IEC reluctance)
  - BN, BE, BX (IEC asynchronous)
  - BS (IEC single phase)

### Motor options

- Thermistors and thermostat sensors
- Independent forced cooling
- Incremental, sin/cos absolute single/multi-turn encoders
- Tropicalization
- Anti-condensation heaters

### Main options

- Double oil seals
- Fluoroelastomer seals
- Reduced backlash
- Up to C5 surface protection

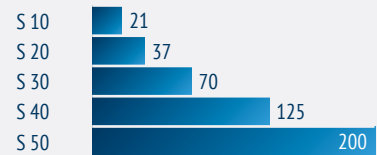
### Key benefits

- Minimized mounting space
- Robustness
- Reduced standard backlash
- Highly dynamic, energy-saving solution
- Wide output speed selection range
- Gearboxes can operate safely in explosive environments

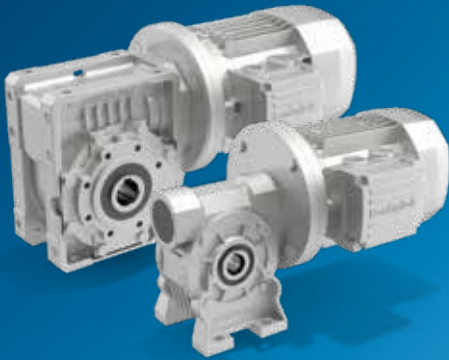
### Key features

- Essential design
- Compact motor coupling
- Unibox housing
- Forced gearshaft coupling
- Servomotor coupling

### Torque (Nm)



# Universal Worm Gearmotors & Units



## VF/W Series

The VF/W Series succeeds in combining uncompromising quality with state-of-the-art technology and cost-effectiveness. The wide choice of mounting options allows for completely flexible shaft configurations and motor interfaces, all offered as standard. Thanks to several patented manufacturing techniques, Bonfiglioli's VF/W Series stands out for its long operating life and reliability.



ATEX GEARBOX AVAILABLE

### Gear ratios

- 7 - 300 ... 2,300

### Mechanical rating

- 0.04 ...75 kW

### Motors

- Input with solid shaft
- Input with e-motor coupling:
  - M, ME, MX (compact asynchronous)
  - BN, BE, BX (IEC asynchronous)
  - BSR (IEC reluctance)
  - BS (IEC single phase)

### Motor options

- Thermistors and thermostat sensors
- Independent forced cooling
- Incremental, sin/cos absolute single/multi-turn encoders
- Tropicalization
- Anti-condensation heaters
- Backstop

### Main options

- Up to C5 Surface protection
- Short flange & reinforced bearings
- Torque arm
- Fluoroelastomer oil seals

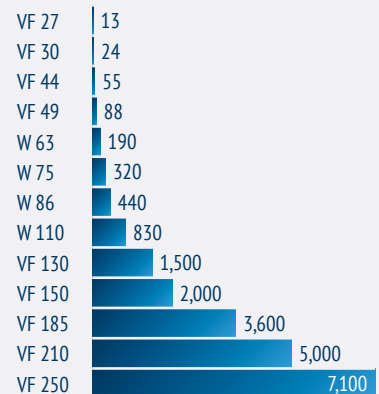
### Key benefits

- Cost-effective solution
- Low noise
- High peak load capacity
- Minimized mounting space
- Long operating life
- High reliability
- Many possible configurations
- Wide output speed/torque selection range
- Reduced installation space and wide output speed selection range

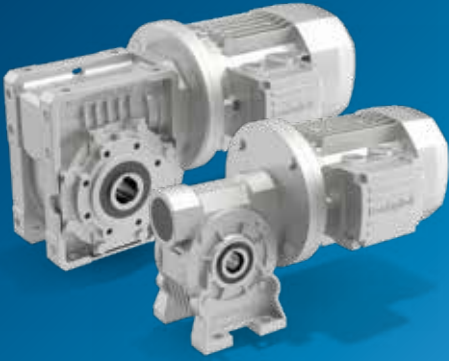
### Key features

- Consolidated worm technology
- Compact design
- High quality standards
- Patented manufacturing techniques
- Wide range of options/versions
- Pre-stage version
- Atex - gearbox for explosive environments 2G/2D

### Torque (Nm)



# Enhanced Protection Worm Gearmotors & Units



## VF/W-EP Series

The VF/W-EP Series is designed to meet the requirements of the food & beverage and pharma & chemical industries and, more generally, to ensure risk-free operation in harsh environments. This version of the gearmotor is manufactured with improved sealing, enhanced corrosion protection and paint suitable for accidental food contact as the standard option. All these features work together to meet the highest hygienic requirements and to greatly increase gearmotor cleanability and operating lifetime in harsh and humid environments.

### Gear ratios

- 7 ... 300

### Degree of protection

- IP 56 as standard

### Mechanical rating

- 0,12 ... 4 kW

### Motors

- Input with solid shaft
- Input with e-motor coupling:
  - BN, BE, BX (IEC asynchronous)
  - M, ME, MX (compact asynchronous)

### Motor options

- Thermistors and thermostat sensors
- Independent forced cooling
- Incremental, sin/cos absolute single/multi-turn encoders
- Anti-condensation heaters
- Backstop

### Main options

- H1 food-grade lubricant
- Wash-down duty double lip oil seals with stainless frame
- Fluoroelastomer rings on output shaft with inner stainless steel loading spring
- FDA and NSF registered paintings for food contact zones
- Up to C5M surface protection

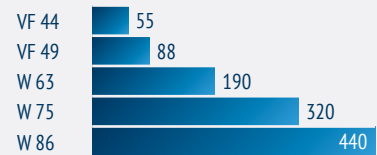
### Key benefits

- No dust ingress and protected against water jets
- Minimized environmental contamination
- Mounting flexibility
- Food zone compliant (FDA & NSF)
- Suitable for humid environment
- Anti-rust
- Easy to wash

### Key features

- Tropicalized
- Condensation drain holes
- Stainless-steel nameplate & bolts
- Fully sealed gearbox
- Stainless-steel output
- Stainless-steel nameplates and bolts
- Food grade lubricant and coatings
- Special seals
- Pierced gearbox housing

### Torque (Nm)



# Industrial Planetary Gearmotors & Units



## 300M Series

Bonfiglioli's 300M Series is an outstanding solution for all heavy-duty applications where compactness is not an option. Thanks to its modular design, the 300M Series can be customized to match an extremely wide range of applications. Bonfiglioli's expertise in planetary technology ensures high-quality product design and manufacturing procedures. The 300 Series operates without unwanted downtime even in the harshest environments. This planetary gearbox achieves top-class flexibility thanks to several outputs, as well as input configurations available for all 20 sizes.



ATEX GEARBOX AVAILABLE

### Gear ratios

- 3.4 ... 2,916

### Mechanical rating

- up to 1,050 kW

### Motors

- Input with solid shaft
- Input with e-motor coupling:
  - M, ME, MX (compact asynchronous)
  - BN, BE, BX (IEC asynchronous)
  - BSR (IEC reluctance)
  - BS (IEC single phase)

### Motor options

- Thermistors and thermostat sensors
- Independent forced cooling
- Incremental, sin/cos absolute single/multi-turn encoders
- Tropicalization
- Anti-condensate heaters
- Backstop

### Main options

- In line/right angle version
- Independent cooling unit
- Patented integrated cooling solution
- Taconite seals
- ATEX certification for explosive environments

### Key benefits

- High torque density
- Extreme speed reduction and high output torque
- Low maintenance cost
- Extremely customizable
- Flexibility
- Usable in explosive environments

### Key features

- Highly transmissible torque/weight ratio
- Combined version (HD, A, W/VF series)
- High quality standards
- High shock resistance
- Wide range of options and accessories
- Electric and hydraulic motor compatible
- Built-in cooling fan
- ATEX version 2G/2D

### Torque (Nm)

300	1,250
301	2,460
303	2,970
304	3,960
305	5,800
306	10,840
307	15,680
309	23,240
310M	33,460
311M	49,210
313M	60,940
314M	80,640
315M	100,800
316M	134,390
317M	207,490
318M	297,550
319	471,190
321	655,740
323	890,310
325	1,286,000

# Combined Planetary/Helical Bevel Heavy Duty Gear Units



## 3/H Series

The Bonfiglioli 3/H Series combines the high torque density of planetary gear units with the robustness and high-speed operation of the helical bevel heavy-duty products. This configuration can provide great power transmission in a very compact space, thanks to its angular layout. The 3/H Series can also come with a set of features such as hydraulic couplings or cooling circuits, adapted according to customers' needs.

### Gear ratios

- 89.1... 1,070

### Mechanical rating

- 0,12 ... 4 kW

### Motors

- Input with solid shaft
- Input with e-motor coupling:
  - M, ME, MX (compact asynchronous)
  - BN, BE, BX (IEC asynchronous)
  - BSR (IEC reluctance)
  - BS (IEC single phase)

### Motor options

- Thermistors and thermostat sensors
- Independent forced cooling
- Incremental, sin/cos absolute single/multi-turn encoders
- Tropicalization
- Anti-condensation heaters
- Backstop

### Main options

- Auxiliary thermal devices
- Forced lubrication
- Backstop devices
- Torque arm
- Base plates
- Fluid couplings
- Shoe brakes

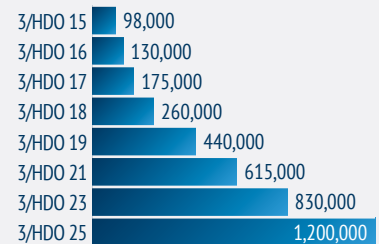
### Key benefits

- High continuous transmissible torque and power
- Suitable for all heavy-duty applications
- High shock resistance
- High reliability
- Easy maintenance
- Highly customizable

### Key features

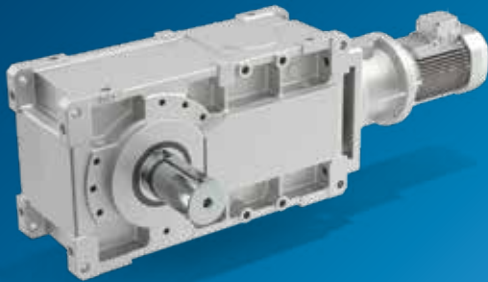
- Highest transmissible torque in the Bonfiglioli portfolio
- Designed to ensure the longest service intervals
- Modular design
- Wide range of available options
- Several available cooling systems
- Easy integration with base plates

### Torque (Nm)





# Helical Bevel Heavy Duty Gear Units



## HDO Series

When high torque, robustness, reliability and long-operating life are required, Bonfiglioli's HDO Series is the best possible option. Thanks to high-quality materials and an optimized design, the HD Series can operate in the harshest environments, as well as in explosive atmospheres, with low maintenance costs and long service intervals. The HDO Series can also be fully customized thanks to an extremely broad portfolio of options and accessories.



ATEX GEARBOX AVAILABLE

### Gear ratios

- 5.6 ... 490

### Motors

- Input with solid shaft
- Input with e-motor coupling:
  - BN, BE, BX [IEC asynchronous]
  - BSR [IEC reluctance]

### Motor options

- Thermistors and thermostat sensors
- Independent forced cooling
- Incremental, sin/cos absolute single/multi-turn encoders
- Tropicalization
- Anti-condensation heaters

### Main options

- Fan cooling, cooling coil, oil heater
- External cooling unit
- Backstop
- Forced lubrication
- Temperature and oil level sensors
- Drywell
- Taconite seals
- ATEX certification for explosive environments

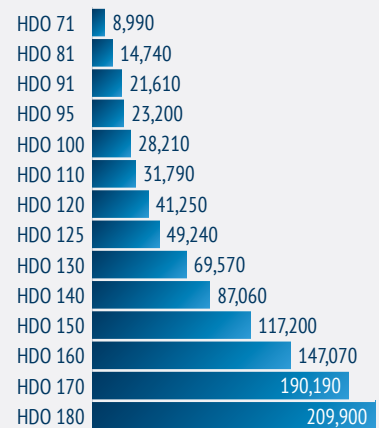
### Key benefits

- Highly transmissible power
- Robustness
- Mounting flexibility
- Reliability
- Usable in explosive environments

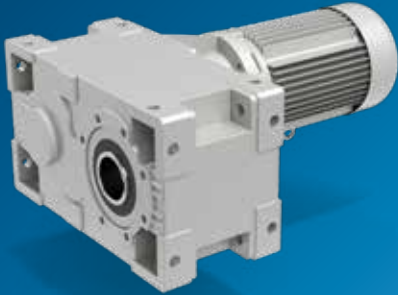
### Key features

- Spheroidal cast iron housing
- I/O shaft planarity and gearbox symmetry
- Wide range of options and accessories
- High design standards
- Atex - gearbox for explosive environments 2G/2D

### Torque (Nm)



# Helical Parallel Shaft Heavy Duty Gear Units



## HDP Series

When high torque, robustness, reliability and long-operating life are required, Bonfiglioli's HDP Series is the best possible option. Thanks to high-quality materials and an optimized design, the HD Series can operate in the harshest environments, as well as in explosive atmospheres, with low maintenance costs and long service intervals. The HDP Series can also be fully customized thanks to an extremely broad portfolio of options and accessories.



ATEX GEARBOX AVAILABLE

### Gear ratios

- 7.1 ... 500

### Motors

- Input with solid shaft
- Input with e-motor coupling:
  - BN, BE, BX [IEC asynchronous]
  - BSR [IEC reluctance]

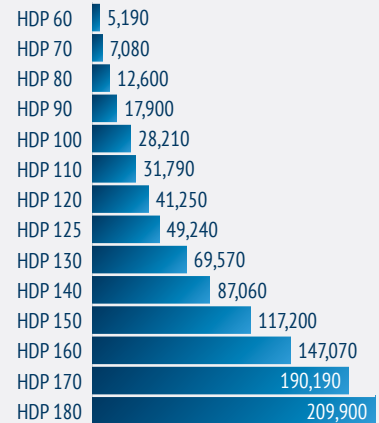
### Motor options

- Thermistors and thermostat sensors
- Independent forced cooling
- Incremental, sin/cos absolute single/multi-turn encoders
- Tropicalization
- Anti-condensation heaters

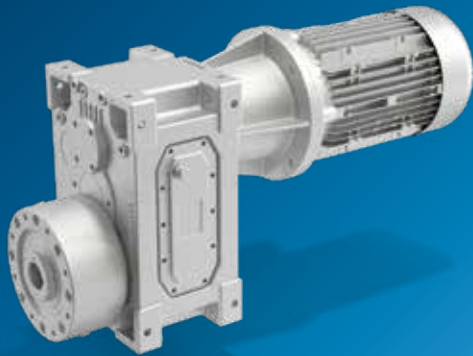
### Output

- Single/double sided solid input shaft (metric or inch dims)
- Keyed hollow shaft
- Shrink disc

### Torque (Nm)



# Helical Parallel Shaft Heavy Duty Gear Units



## HDPE Series

This product is dedicated to the extruder market and provides high customization of output and gear ratio combinations to fulfill our customers' needs. This gear unit provides a robust nodular cast iron gear case suitable for high loads and specific heavy duty thrust bearing sourced exclusively from primary brands. This solution also allows easy machine integration thanks to a universal mounting gearbox case (customized screw interface can be provided too) and can come with an auxiliary thermal aid device (cooling coil, oil to water heat exchanger), and oil temperature and level sensors to easily monitor its functioning.

### Gear ratios

- 7.1 ... 125

### Motors

- Input with solid shaft
- Input with e-motor coupling:
  - BN, BE, BX (IEC asynchronous)
  - BSR (IEC reluctance)

### Motor options

- Thermistors and thermostat sensors
- Independent forced cooling
- Incremental, sin/cos absolute single/multi-turn encoders
- Tropicalization
- Anti-condensation heaters

### Main options

- Auxiliary thermal aid device (cooling coil, oil to water heat exchanger)
- Fluoroelastomer compound oil seals on I/O shaft
- Oil temperature and level sensors

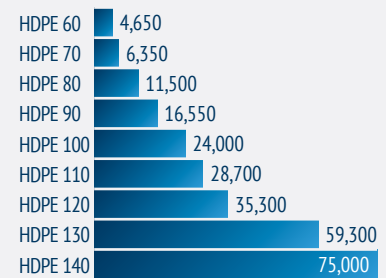
### Key benefits

- Easy machine integration thanks to universal mounting gearbox case (customized screw interface can also be provided)
- Suitable for high loads
- Adaptability to customers requirements

### Key features

- Dedicated design for single screw extruder drive;
- Robust nodular cast-iron gear case
- Specific heavy duty thrust bearing sourced exclusively from primary brands
- Auxiliary thermal aid device
- Thrust bearing case designed to lodge a wide range of bearings

### Torque (Nm)



# Electric Motors



# Asynchronous IE1 Three Phase motor



## BN/M Series

The IEC-normalized BN motors comply with all the applicable international standards, including the EMC and LV Directives. They are available in the 0.06 - 30 kW range in the foot and the flange mounting version, the latter in both the IM B5 and the IM B14 configuration. Single and multi-speed versions available with generally three brake options offered, one DC and two AC supply, lending further flexibility to the system. Lastly, all motors are inverter duty.

### Degree of protection

- Standard IP55
- Standard for brake motors IP54

### Conformity

- Efficiency - IEC 60034-30:2008
- Low Voltage Directive - 2006/95/EC
- Electromagnetic Compatibility
- Directive - 2006/95/EC

### Power supply

- @50 Hz: 230/400, 290/500, 400/690, 290/500
- @60 Hz: 230/460, 330/575, 265/460, 460/800

### Mounting options

- IM B3, IM B5, IM B14

### Brake types

- AC & DC brakes

### Brake-related options

- Manual release lever
- Soft-start flywheel
- Capacitive filter
- Brake separate power supply
- Brake functionality check (micro-switch)

### Motors

- 3 phase asynchronous

### Motor options

- Thermistors and thermostat sensors
- Independent forced cooling
- Incremental, sin/cos absolute single/multi-turn encoders
- Tropicalization
- Anti-condensate heaters
- Up to IP65 protection

### Key benefits

- Reduced operating cost
- Energy saving
- Compliant with all the MEPS
- Complete solution (gearbox and motor)
- Control flexibility
- Flexibility
- Global motor

### Key features

- Up to IE3 efficiency
- Compact version
- Inverter duty ready
- Multiple-speed motors
- Certified motor (DOE, NRCAN, CCC, etc.)

### Power (kW)

BN 56A	0.06
BN 56B	0.09
BN 63A	0.12
BN 63B	0.18
BN 63C	0.25
BN 71A	0.25
BN 71B	0.37
BN 71C	0.55
BN 80A	0.55
BN 80B	0.75
BN 80C	1.1
BN 90S	1.1
BN 90LA	1.5
BN 90LB	1.85
BN 100LA	2.2
BN 112M	3.7
BN 132S	5.5
BN 132MA	7.5
BN 132MB	9.2
BN 160MR	11
BN 160M	11
BN 160L	15
BN 180M	18.5
BN 180L	22
BN 200L	30

# Asynchronous IE2 Three Phase motor



## BE/ME Series

The IEC-normalized BE motors comply with IEC 60034-30:2008 (efficiency classes) and all the applicable international standards, including the EMC and LV Directives.

They are available in the 0.75 - 22 kW range in the foot and the flange mounting version, the latter in both the IM B5 and the IM B14 configuration.

Lastly, all motors are inverter duty.

### Degree of protection

- Standard IP55

### Conformity

- Efficiency - IEC 60034-30:2008
- Low Voltage Directive - 2006/95/EC
- Electromagnetic Compatibility
- Directive - 2006/95/EC

### Power supply

- @50 Hz: 230/400, 290/500, 400/690, 290/500
- @60 Hz: 230/460, 330/575, 265/460, 460/800

### Mounting options

- IM B3, IM B5, IM B14

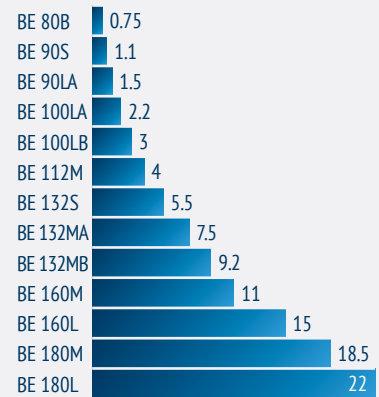
### Motors

- 3 phase asynchronous

### Motor options

- Thermistors and thermostat sensors
- Independent forced cooling
- Incremental, sin/cos absolute single/multi-turn encoders
- Tropicalization
- Anti-condensate heaters
- Up to IP65 protection

### Power (kW)



# Asynchronous IE3 Three Phase motor



## BX/MX Series

The release of the new BX/MX motors is a further expression of our regard for the environment. The BX/MX motors fulfil IE3 efficiency class requirements, according to the international standard IEC 60034-30. The “X” of the new BX/MX motors stands for “excellence” in efficiency, being IE3 the top efficiency rating currently formalized by global standards. Lastly, all motors are inverter duty and generally 3 brakes options are offered.

### Degree of protection

- Standard IP55
- Standard for brake motors IP54

### Conformity

- Efficiency - IEC 60034-30:2008
- Low Voltage Directive - 2006/95/EC
- Electromagnetic Compatibility
- Directive - 2006/95/EC

### Power supply

- @50 Hz: 230/400, 290/500, 400/690, 290/500
- @60 Hz: 230/460, 330/575, 265/460, 460/800

### Mounting options

- IM B3, IM B5, IM B14

### Brake types

- AC & DC brakes

### Brake-related options

- Manual release lever
- Soft-start flywheel
- Capacitive filter
- Brake separate power supply
- Brake functionality check (micro-switch)

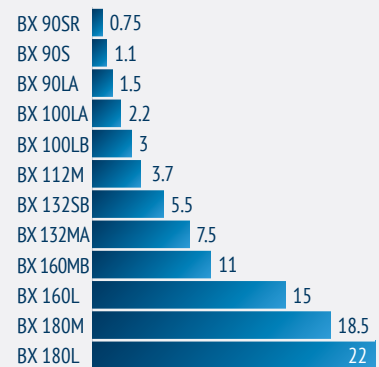
### Motors

- 3 phase asynchronous

### Motor options

- Thermistors and thermostat sensors
- Independent forced cooling
- Incremental, sin/cos absolute single/multi-turn encoders
- Tropicalization
- Anti-condensate heaters
- Up to IP65 protection

### Power (kW)



# Asynchronous IE3 Three Phase motor



## BX Heavy Duty Series

BX Heavy Duty asynchronous motors are manufactured to exceed the requirements of the most demanding industrial applications. Bonfiglioli Heavy Duty Asynchronous motors, indeed, comes with a best in class set of features: cast iron frame, C3 corrosion protection, regreasable bearings, and Shock Pulse Measurement predisposition as standard on all sizes, are only few of the characteristics that makes these motors the most suitable also in the harshest enviroments.

### Degree of protection

- Standard IP55 also for Brakemotors

### Conformity

- Efficiency - IEC 60034-30:2008
- Low Voltage Directive - 2006/95/EC
- Electromagnetic Compatibility Directive - 2006/95/EC

### Power supply

- @50 Hz: 400/690, 380/660
- @60 Hz: 460, 440/760

### Mounting options

- IM B3, IM B5, IM B35

### Certifications

- CE, CEL, UL, NBR, EECA

### Motors

- 3 phase asynchronous

### Motor options

- Thermistors and thermostat sensors
- Independent forced cooling
- Heavy Duty Encoders
- Tropicalization
- Anti-Condensate Heaters
- Up to IP56 protection

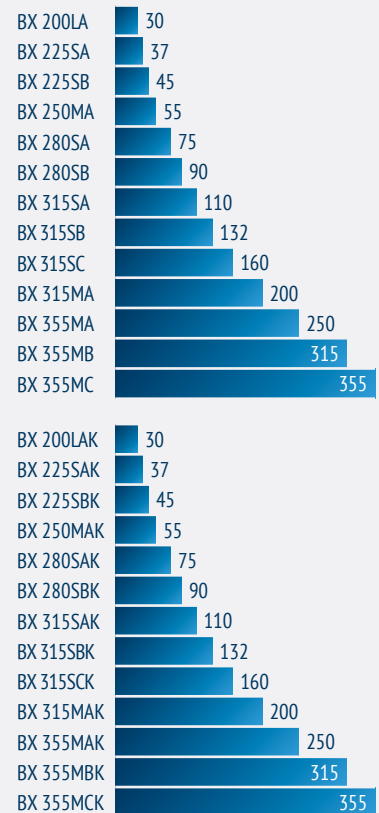
### Motor options

- Robustness
- Long lifetime
- Wide power range
- Energy saving
- Compliant to all the MEPS
- Complete (Gearbox+Motor) Solution
- Control flexibility
- Global motor (can be utilized in most of the markets)

### Key features

- IE3 Efficiency
- Cast Iron Housing
- Inverter duty ready
- SPM Measurement
- Predisposition
- Certified motor (DOE, NRCan, CCC...)

### Power (kW)





# Synchronous reluctance motor



## BSR Series

The reluctance motor guarantees a sustainable ecological solution which decreases the total environmental impact thanks to the absence of magnets and increased efficiency. Reduced operating costs allow a fast return. This product benefits from the proven simplicity and reliability of induction motors and the higher efficiency of synchronous motors.

### Sizes

- High efficiency package  
71C ... 132 MB
- High output package  
71C ... 132 MB

### Rated motor power

- High efficiency package  
0.37 ... 9.2 kW
- High output package  
0.55 ... 18.5 kW

### Power supply

- 400 Vac

### Degree of protection

- Standard IP55
- IP56 (optional)

### Motor mounting

- B3; B5; B14

### Main options

- Thermal protection
- Silicon sensor KTY 84-130
- Thermistor PTC 150
- Platinum sensor PT1000
- Forced ventilation
- Power supply 1 phase 230V (frame 71-100) 3-400V Y (frame 112-132)
- Double extended shaft
- External mechanical protection
- Rotor balancing grade B

### Key benefits

- Highly accurate sensorless control technology
- Compact, economical & eco-friendly
- High dynamic response
- Energy savings
- High reliability
- High performance solution

Both Bonfiglioli packages are IES2 according to the International Efficiency of Systems (IES) classification for the drive and motor combination (IEC 61800-9-2).

## Presenza globale



Bonfiglioli vanta una presenza in ben 22 paesi nei 5 continenti, presupposto essenziale per occupare una posizione di spicco nel settore. La nostra struttura organizzativa sfrutta la vicinanza geografica per fornire soluzioni dedicate complete con efficacia e competenza.



3700  
DIPENDENTI



22  
FILIALI



14  
STABILIMENTI  
PRODUTTIVI



550  
DISTRIBUTORI



80  
PAESI

## Siamo un'azienda globale

Grazie a una rete internazionale di filiali e impianti di produzione strettamente interconnessi, possiamo garantire gli stessi elevati livelli di qualità Bonfiglioli in qualunque parte del mondo ovunque e in qualsiasi momento. Con la nitida consapevolezza che la chiave di un successo duraturo sia la presenza diretta nei mercati locali, abbiamo strutturato la nostra azienda con 22 filiali commerciali, 14 stabilimenti produttivi e oltre 550 distributori in tutto il mondo.

**La nostra presenza sui mercati di riferimento non si limita a offrire soluzioni complete ed efficienti, ma prevede anche assistenza capillare ai clienti con servizi dedicati, come il co-engineering o l'assistenza post-vendita.**



# Bonfiglioli Worldwide Locations

## Australia

www.bonfiglioli.com.au  
2, Cox Place Glendenning NSW 2761  
Locked Bag 1000 Plumpton NSW 2761  
Tel. +61 2 8811 8000

## Brasile

www.bonfigliolidobrasil.com.br  
Travessa Cláudio Armando 171 - Bloco 3 - CEP 09861-730  
Bairro Assunção - São Bernardo do Campo - São Paulo  
Tel. +55 11 4344 2322

## Cina

www.bonfiglioli.cn  
Bonfiglioli Drives (Shanghai) Co., Ltd.  
#68, Hui-Lian Road, QingPu District,  
201707 Shanghai  
Tel. +86 21 6700 2000

## Francia

www.bonfiglioli.fr  
14 Rue Eugène Pottier  
Zone Industrielle de Moimont II - 95670 Marly la Ville  
Tel. +33 1 34474510

## Germania

www.bonfiglioli.de  
**Bonfiglioli Deutschland GmbH**  
Sperberweg 12 - 41468 Neuss  
Tel. +49 0 2131 2988 0

## Bonfiglioli Vectron

Europark Fichtenhain B6 - 47807 Krefeld  
Tel. +49 0 2151 8396 0

## O&K Antriebstechnik

Ruhrallee 8-12 - 45525 Hattingen  
Tel. +49 0 2324 2050 1

## India

www.bonfiglioli.in  
Bonfiglioli Transmissions Pvt. Ltd.  
Plot No. AC7-AC11, SIDCO Industrial Estate,  
Thirumudivakkam - 600 044 Chennai  
Tel. +91 44 2478 1035

## Industrial

Survey No. 528, Porambakkam High Road,  
Mannur Village, Sriperambudur Taluk - 602 105 Chennai  
Tel. +91 44 6710 3800  
Plot No. A-95, Phase IV, MIDC Chakan, Village Nighoje  
Pune, Maharashtra - 410 501

## Italia

www.bonfiglioli.it

## Headquarters

Bonfiglioli Riduttori S.p.A.  
Via Giovanni XXIII, 7/A - 40012 Lippo di Calderara di Reno  
Tel. +39 051 647 3111

## Mobile, Wind

Via Enrico Mattei, 12 Z.I. Villa Selva - 47100 Forlì  
Tel. +39 0543 789111

## Industrial

Via Bazzane, 33/A - 40012 Calderara di Reno  
Tel. +39 051 6473111

Via Trinità, 1 - 41058 Vignola

Tel. +39 059 768511

Via Sandro Pertini lotto 7b - 20080 Carpiano

Tel. +39 02 985081

## Bonfiglioli Mechatronic Research

Via F. Zeni 8 - 38068 Rovereto  
Tel. +39 0464 443435/36

## Nuova Zelanda

www.bonfiglioli.co.nz  
88 Hastie Avenue, Mangere Bridge, 2022 Auckland  
PO Box 11795, Ellerslie  
Tel. +64 09 634 6441

## Singapore

www.bonfiglioli.com  
24 Pioneer Crescent #02-08  
West Park Bizcentral - Singapore, 628557  
Tel. +65 6268 9869

## Slovacchia

www.bonfiglioli.com  
Robotnícka 2129  
Považská Bystrica, 01701 Slovakia  
Tel. +421 42 430 75 64

## Sud Africa

www.bonfiglioli.co.za  
55 Galaxy Avenue, Linbro Business Park - Sandton  
Tel. +27 11 608 2030

## Spagna

www.tecnotrans.bonfiglioli.com  
Tecnotrans Bonfiglioli S.A.  
Pol. Ind. Zona Franca, Sector C, Calle F, nº 6  
08040 Barcelona  
Tel. +34 93 447 84 00

## Turchia

www.bonfiglioli.com.tr  
Atatürk Organize Sanayi Bölgesi, 10007 Sk. No. 30  
Atatürk Organize Sanayi Bölgesi, 35620 Çiğli - Izmir  
Tel. +90 0 232 328 22 77

## Gran Bretagna

www.bonfiglioli.co.uk

## Industrial

Unit 7, Colemeadow Road  
North Moons Moat - Redditch, Worcestershire B98 9PB  
Tel. +44 1527 65022

## Mobile, Wind

3 - 7 Grosvenor Grange, Woolston  
Warrington - Cheshire WA1 4SF  
Tel. +44 1925 852667

## USA

www.bonfiglioliusa.com  
3541 Hargrave Drive  
Hebron, Kentucky 41048  
Tel. +1 859 334 3333

## Vietnam

www.bonfiglioli.vn  
Lot C-9D-CN My Phuoc Industrial Park 3  
Ben Cat - Binh Duong Province  
Tel. +84 650 3577411



We have a relentless commitment to excellence, innovation and sustainability. Our team creates, distributes and services world-class power transmission and drive solutions to keep the world in motion.

#### **HEADQUARTERS**

Bonfiglioli Riduttori S.p.A.  
Via Giovanni XXIII, 7/A  
40012 Lippo di Calderara di Reno  
Bologna (Italy)  
tel: +39 051 647 3111  
fax: +39 051 647 3126  
[bonfiglioli@bonfiglioli.com](mailto:bonfiglioli@bonfiglioli.com)  
[www.bonfiglioli.com](http://www.bonfiglioli.com)

