

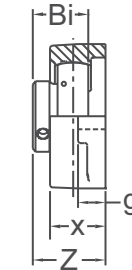
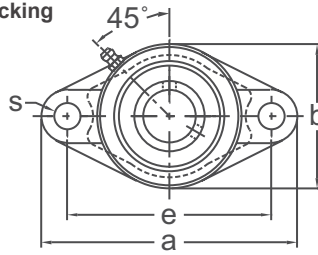


## TWO-BOLT FLANGE UNITS

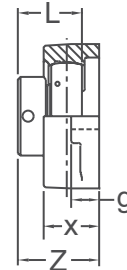
## BFT / KHFT200

NORMAL DUTY

**Set-Screw/Eccentric Locking  
Narrow Inner Ring  
Cast Iron Housing  
Insert Detail-pg.125,126  
Inch and Metric**



BFT 200 Type  
Set-Screw Locking



KHFT 200 Type  
Eccentric Collar Locking



Shaft Diam. (in.)	AMI Unit # Complete with B 200 Type	List Price	AMI Unit # Complete with KH 200 Type	List Price	Dimensions (in.)										Bolt Size (in.)	Bearing #		Housing #	Weight (lb.)
					a	e	g	x	s	b	Z		Bi	L		B	KH		
											BFT	KHFT							
1/2	BFT201-8	42.60	KHFT201-8	43.20	3-29/32	3	7/16	31/32	13/32	2-7/32	1.303	1.543	0.866	1-1/8	3/8	B1-8	KH201-8	FT203	0.86
5/8	BFT202-10	42.60	KHFT202-10	43.20	4-13/32	3-17/32	7/16	31/32	13/32	2-3/8	1.260	1.488	0.972	1-7/32	3/8	B2-10	KH202-10	FT203	0.86
3/4	BFT204-12	42.60	KHFT204-12	43.20	4-13/32	3-17/32	7/16	31/32	13/32	2-3/8	1.260	1.488	0.972	1-7/32	3/8	B4-12	KH204-12	FT204	1.01
7/8	BFT205-14	45.20	KHFT205-14	47.10	4-7/8	3-57/64	17/32	1-1/16	1/2	2-3/4	1.394	1.551	1.063	1-7/32	7/16	B5-14	KH205-14	FT205	1.43
15/16	BFT205-15	45.20	KHFT205-15	47.10	4-7/8	3-57/64	17/32	1-1/16	1/2	2-3/4	1.394	1.551	1.063	1-7/32	7/16	B5-15	KH205-15	FT205	1.43
1	BFT205-16	42.85	KHFT205-16	42.85	4-7/8	3-57/64	17/32	1-1/16	1/2	2-3/4	1.394	1.551	1.063	1-7/32	7/16	B5-16	KH205-16	FT205	1.43
1-1/16	BFT206-17	63.20	—	66.45	5-9/16	4-19/32	17/32	1-3/16	1/2	3-1/4	1.583	1.756	1.193	1-13/32	7/16	B6-17	—	FT206	2.12
1-1/8	BFT206-18	63.20	KHFT206-18	66.45	5-9/16	4-19/32	17/32	1-3/16	1/2	3-1/4	1.583	1.756	1.193	1-13/32	7/16	B6-18	KH206-18	FT206	2.12
1-3/16	BFT206-19	63.20	KHFT206-19	66.45	5-9/16	4-19/32	17/32	1-3/16	1/2	3-1/4	1.583	1.756	1.193	1-13/32	7/16	B6-19	KH206-19	FT206	2.12
1-1/4	BFT206-20	63.20	KHFT206-20	66.45	5-9/16	4-19/32	17/32	1-3/16	1/2	3-1/4	1.583	1.756	1.193	1-13/32	7/16	B6-20	KH206-20	FT206	2.12
1-1/4	BFT207-20	72.60	KHFT207-20	80.00	6-1/8	5-1/8	9/16	1-11/32	35/64	3-3/4	1.713	1.909	1.295	1-17/32	1/2	B7-20	KH207-20	FT207	3.1
1-5/16	BFT207-21	72.60	KHFT207-21	80.00	6-1/8	5-1/8	9/16	1-11/32	35/64	3-3/4	1.713	1.909	1.295	1-17/32	1/2	B7-21	KH207-21	FT207	3.1
1-3/8	BFT207-22	72.60	KHFT207-22	80.00	6-1/8	5-1/8	9/16	1-11/32	35/64	3-3/4	1.713	1.909	1.295	1-17/32	1/2	B7-22	KH207-22	FT207	3.1
1-7/16	BFT207-23	72.60	KHFT207-23	80.00	6-1/8	5-1/8	9/16	1-11/32	35/64	3-3/4	1.713	1.909	1.295	1-17/32	1/2	B7-23	KH207-23	FT207	3.1
1-1/2	BFT208-24	101.35	KHFT208-24	91.20	6-3/4	5-21/32	9/16	1-1/2	35/64	4-1/8	1.870	2.114	1.398	1-23/32	1/2	B8-24	KH208-24	FT208	3.97
1-5/8	—	—	KHFT209-26	103.65	7-1/16	5-27/32	9/16	1-9/16	5/8	4-3/8	—	2.146	—	1-23/32	9/16	—	KH209-26	FT209	4.36
1-11/16	—	—	KHFT209-27	103.65	7-1/16	5-27/32	9/16	1-9/16	5/8	4-3/8	—	2.146	—	1-23/32	9/16	—	KH209-27	FT209	4.36
1-3/4	—	—	KHFT209-28	103.65	7-1/16	5-27/32	9/16	1-9/16	5/8	4-3/8	—	2.146	—	1-23/32	9/16	—	KH209-28	FT209	4.36
1-7/8	—	—	KHFT210-30	119.40	7-7/16	6-3/16	9/16	1-9/16	5/8	4-9/16	—	2.161	—	1-23/32	9/16	—	KH210-30	FT210	4.56
1-15/16	—	—	KHFT210-31	119.40	7-7/16	6-3/16	9/16	1-9/16	5/8	4-9/16	—	2.161	—	1-23/32	9/16	—	KH210-31	FT210	4.56
2	—	—	KHFT211-32	160.10	8-1/2	7-1/4	13/16	1-3/4	21/32	5-1/4	—	2.433	—	1-29/32	5/8	—	KH211-32	FT211	6.85
2-3/16	—	—	KHFT211-35	160.10	8-1/2	7-1/4	13/16	1-3/4	21/32	5-1/4	—	2.433	—	1-29/32	5/8	—	KH211-35	FT211	6.85
Dimensions (mm)																			
12	BFT201	42.60	KHFT201	43.20	99	76.2	11	25	10.5	56.5	33.1	39.2	22	28.6	M8	B1	KH201	FT203	0.86
15	BFT202	42.60	KHFT202	43.20	99	76.2	11	25	10.5	56.5	33.1	39.2	22	28.6	M8	B2	KH202	FT203	0.86
17	BFT203	42.60	KHFT203	43.20	99	76.2	11	25	10.5	56.5	33.1	39.2	22	28.6	M8	B3	KH203	FT203	0.83
20	BFT204	42.60	KHFT204	43.20	112	89.7	11	25	10.5	60	32.0	37.8	24.7	31	M8	B4	KH204	FT204	1.01
25	BFT205	45.20	KHFT205	47.10	124	98.8	13	27	12.5	70	35.4	39.4	27	31	M10	B5	KH205	FT205	1.43
30	BFT206	63.20	KHFT206	66.45	141	116.7	13	30	12.5	83	40.2	44.6	30.3	35.7	M10	B6	KH206	FT206	2.12
35	BFT207	72.60	KHFT207	80.00	156	130.2	14	34	14	95	43.5	48.5	32.9	38.9	M12	B7	KH207	FT207	3.10
40	BFT208	101.35	KHFT208	91.20	171	143.7	14	38	14	105	47.5	53.7	35.5	43.7	M12	B8	KH208	FT208	3.97
45	—	—	KHFT209	103.65	179	148.4	14	40	16	111	—	54.5	—	43.7	M14	—	KH209	FT209	4.36
50	—	—	KHFT210	119.40	189	157.2	14	40	16	116	—	54.9	—	43.7	M14	—	KH210	FT210	4.56
55	—	—	KHFT211	160.10	216	184.2	21	44	17	133	—	61.8	—	48.7	M16	—	KH211	FT211	7.12

Lubrication fitting tap size for 1" and smaller shaft sizes, 1/4-28 UNF; for all other sizes, 1/8-27 NPT

**INTERCHANGES: VF2E-1 F2B-SXV VCJT FX3W-U FYT-FM AELFL VFT-E**

# UGFJT 200

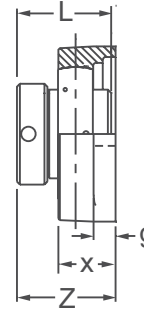
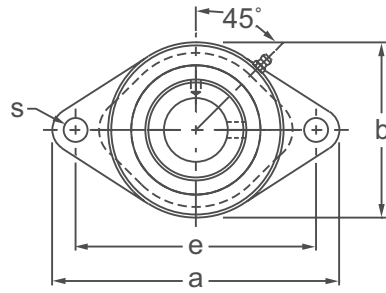
## TWO-BOLT FLANGE UNITS



NORMAL DUTY



Fafnir® "RCJT" Style



**Eccentric Locking  
Wide Inner Ring  
Cast Iron Housing  
Insert Detail-pg.124  
Inch and Metric**

Shaft Diam. (in.)	AMI Unit #	List Price	Dimensions (in.)								Bolt Size (in.)	Bearing #	Housing #	Weight (lb.)
			a	e	g	x	s	b	Z	L				
1/2	UGFJT201-8	54.80	3-57/64	3	13/32	1	29/64	2-1/4	1.591	1-15/32	3/8	UGW201-8	FJT203	1.35
5/8	UGFJT202-10											UGW202-10		
3/4	UGFJT204-12	54.80	4-13/32	3-17/32	13/32	1-7/64	29/64	2-13/32	1.795	1-23/32	3/8	UG204-12	FJT204	1.30
7/8	UGFJT205-14	62.60	4-7/8	3-57/64	7/16	1-9/64	29/64	2-3/4	1.807	1-3/4	7/16	UG205-14	FJT205	1.35
15/16	UGFJT205-15											UG205-15		
1	UGFJT205-16											UG205-16		
1-1/8	UGFJT206-18	77.90	5-19/32	4-19/32	31/64	1-9/64	29/64	3-9/64	1.972	1-29/32	7/16	UG206-18	FJT206	2.30
1-3/16	UGFJT206-19											UG206-19		
1-1/4	UGFJT206-20											UG206-20		
1-1/4	UGFJT207-20	95.20	6-7/64	5-1/8	31/64	1-1/4	9/16	3-5/8	2.098	2-1/64	1/2	UG207-20	FJT207	3.25
1-5/16	UGFJT207-21											UG207-21		
1-3/8	UGFJT207-22											UG207-22		
1-7/16	UGFJT207-23											UG207-23		
1-1/2	UGFJT208-24	107.90	6-3/4	5-21/32	33/64	1-11/32	9/16	4-1/8	2.319	2-7/32	1/2	UG208-24	FJT208	4.65
1-9/16	*UGFJT208-25											UG208-25		
1-5/8	UGFJT209-26	116.80	7-13/32	5-27/32	33/64	1-3/8	9/16	4-3/8	2.319	2-7/32	1/2	UG209-26	FJT209	5.60
1-11/16	UGFJT209-27											UG209-27		
1-3/4	UGFJT209-28											UG209-28		
1-7/8	UGFJT210-30	150.60	7-1/2	6-3/16	33/64	1-17/32	43/64	4-9/16	2.602	2-15/32	5/8	UG210-30	FJT210	5.95
1-15/16	UGFJT210-31											UG210-31		
2	UGFJT210-32											UG210-32		
2	UGFJT211-32	197.00	8-3/4	7-1/4	19/32	1-45/64	43/64	5-1/4	2.937	2-13/16	5/8	UG211-32	FJT211	8.05
2-1/8	UGFJT211-34											UG211-34		
2-3/16	UGFJT211-35											UG211-35		
Dimensions (mm)														
20	UGFJT204	54.80	112	90	10	28	11.5	61	45.6	43.7		UG204	FJT204	1.30
25	UGFJT205	62.60	124	99	11	29	11.5	70	45.9	44.4	M10	UG205	FJT205	1.35
30	UGFJT206	77.90	142	116.5	12	29	11.5	80	50.1	48.4		UG206	FJT206	2.30
35	UGFJT207	95.20	155	130	12	31	14	92	53.3	51.1		UG207	FJT207	3.25
40	UGFJT208	107.90	172	143.5	13	34	14	105	58.9	56.3	M12	UG208	FJT208	4.65
45	UGFJT209	116.80	188	148.5	13	35	14	111	58.9	56.3		UG209	FJT209	5.60
50	UGFJT210	150.60	190	157	13	39	17	116	66.1	62.7		UG210	FJT210	5.95
55	UGFJT211	197.00	222	184	15	43	17	134	74.6	71.4	M16	UG211	FJT211	8.05

\*Consult factory for availability

Lubrication fitting tap size for 1" and smaller shaft sizes, 1/4-28 UNF; for all other sizes, 1/8-27 NPT

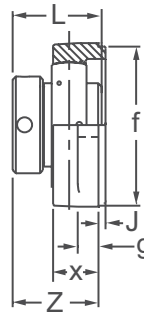
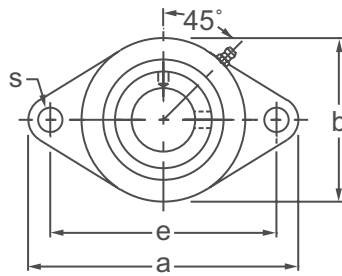
**INTERCHANGES: VF2E-2 F2B-SXR RCJT FYT-WM UELFLU RFT-E**



# PILOTED TWO-BOLT FLANGE UNITS

# UGCJTZ 200

**Eccentric Locking  
Wide Inner Ring  
Cast Iron Housing  
Insert Detail-pg.124  
Inch and Metric**



**NORMAL DUTY**

Shaft Diam. (in.)	AMI Unit #	List Price	Dimensions (in.)										Bolt Size (in.)	Bearing #	Housing #	Weight (lb.)	
			a	e	g	x	s	b	J	f	Z	L					
3/4	UGCJTZ204-12	65.75	4-13/32	3.543	25/64	1-7/32	0.453	2-23/64	0.138	2.165	1.795	1-23/32	3/8	UG204-12	CJTZ204	1.28	
7/8	UGCJTZ205-14	76.80	4-7/8	3.898	15/32	1-1/32	0.453	2-3/4	0.138	2.362	1.807	1-3/4	7/16	UG205-14	CJTZ205	1.59	
15/16	UGCJTZ205-15													UG205-15			
1	UGCJTZ205-16													UG205-16			
1-1/8	UGCJTZ206-18	88.50	5-19/32	4.587	15/32	1-1/32	0.453	3-17/64	0.118	3.150	1.854	1-29/32	7/16	UG206-18	CJTZ206	2.14	
1-3/16	UGCJTZ206-19													UG206-19			
1-1/4	UGCJTZ206-20													UG206-20			
1-1/4	UGCJTZ207-20	117.75	6-7/64	5.118	15/32	1-1/32	0.551	3-45/64	0.157	3.543	1.941	2-1/64	1/2	UG207-20	CJTZ207	2.8	
1-5/16	UGCJTZ207-21													UG207-21			
1-3/8	UGCJTZ207-22													UG207-22			
1-7/16	UGCJTZ207-23													UG207-23			
1-1/2	UGCJTZ208-24	136.60	6-49/64	5.650	17/32	1-3/16	0.551	4-1/8	0.157	3.937	2.161	2-7/32	1/2	UG208-24	CJTZ208	3.76	
1-9/16	*UGCJTZ208-25													UG208-25			
1-5/8	UGCJTZ209-26	154.20	7-5/64	5.846	17/32	1-7/32	0.551	4-3/8	0.157	4.134	2.161	2-7/32	1/2	UG209-26	CJTZ209	4.42	
1-11/16	UGCJTZ209-27													UG209-27			
1-3/4	UGCJTZ209-28													UG209-28			
1-7/8	UGCJTZ210-30	177.60	7-1/2	6.181	17/32	1-3/8	0.551	4-9/16	0.157	4.134	2.445	2-15/32	1/2	UG210-30	CJTZ210	4.83	
1-15/16	UGCJTZ210-31													UG210-31			
2	UGCJTZ210-32													UG210-32			
Dimensions (mm)																	
20	UGCJTZ204	65.75	112	90	10	31	11.5	60	3.5	55	45.6	43.7	M10	UG204	CJTZ 204	1.28	
25	UGCJTZ205	76.80	124	99	12	26	11.5	70	3.5	60	45.9	44.4		UG205	CJTZ 205	1.59	
30	UGCJTZ206	88.50	142	116.5	12	26	11.5	83	3.0	80	47.1	48.4		UG206	CJTZ 206	2.14	
35	UGCJTZ207	117.75	155	130	12	26	14	94	4.0	90	49.3	51.1	M12	UG207	CJTZ 207	2.80	
40	UGCJTZ208	136.60	172	143.5	13	30	14	105	4.0	100	54.9	56.3		UG208	CJTZ 208	3.76	
45	UGCJTZ209	154.20	180	148.5	13	31	14	111	4.0	105	54.9	56.3		UG209	CJTZ 209	4.42	
50	UGCJTZ210	177.60	190	157	13	35	14	116	4.0	105	62.1	62.7		UG210	CJTZ 210	4.83	

\*Consult factory for availability

Lubrication fitting tap size for 1" and smaller shaft sizes, 1/4-28 UNF; for all other sizes, 1/8-27 NPT

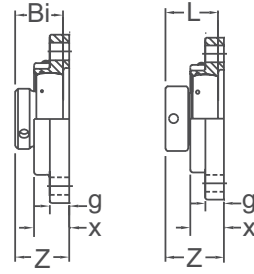
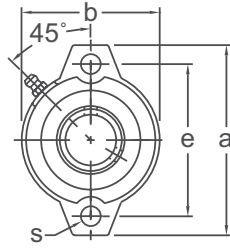
**INTERCHANGES: RCJTZ**

# BLFL / KHLFL 200

# TWO-BOLT FLANGE UNITS



NORMAL DUTY



**Set-Screw/Eccentric Locking  
Narrow Inner Ring  
Cast Iron Housing  
Insert Detail-pg.125,126  
Inch and Metric**

BLFL 200 Type Set-Screw Locking      KHLFL 200 Type Eccentric Collar Locking

Shaft Diam. (in.)	AMI Unit # Complete with B 200 Type	List Price	AMI Unit # Complete with KH 200 Type	List Price	Dimensions (in.)										Bolt Size (in.)	Bearing #		Housing #	Weight (lb.)	
					a	e	g	x	s	b	Z		Bi	L		B	KH			
											BLFL	KHLFL								
1/2	BLFL1-8	37.45	KHLFL201-8	38.85	3-3/16	2-1/2	3/8	23/32	9/32	2-3/16	1.004	1.244	0.866	1-1/8	1/4	B1-8	KH201-8	LFL3	0.66	
5/8	BLFL2-10		KHLFL202-10		B2-10	KH202-10	0.64													
3/4	BLFL4-12	37.95	KHLFL204-12	40.55	3-9/16	2-13/16	7/16	25/32	25/64	2-15/32	1.130	1.358	0.972	1-7/32	5/16	B4-12	KH204-12	LFL4	0.76	
7/8	BLFL5-14	41.20	KHLFL205-14	43.10	3-3/4	3	7/16	25/32	25/64	2-23/32	1.201	1.358	1.063	1-7/32	5/16	B5-14	KH205-14	LFL5	0.98	
15/16	BLFL5-15		KHLFL205-15													B5-15	KH205-15			
1	BLFL5-16		KHLFL205-16													B5-16	KH205-16			
1-1/16	BLFL6-17	56.25	—	59.50	4-7/16	3-9/16	15/32	7/8	15/32	3-3/32	1.350	1.524	1.193	1-13/32	3/8	B6-17	—	LFL6	1.42	
1-1/8	BLFL6-18		KHLFL206-18													B6-18	KH206-18			
1-3/16	BLFL6-19		KHLFL206-19													B6-19	KH206-19			
1-1/4	BLFL6-20		KHLFL206-20													B6-20	KH206-20			
1-1/4	BLFL7-20	70.85	KHLFL207-20	78.25	4-13/16	3-15/16	1/2	15/16	15/32	3-1/2	1.472	1.669	1.295	1-17/32	3/8	B7-20	KH207-20	LFL7	2.05	
1-5/16	BLFL7-21		KHLFL207-21													B7-21	KH207-21			
1-3/8	BLFL7-22		KHLFL207-22													B7-22	KH207-22			
1-7/16	BLFL7-23		KHLFL207-23													B7-23	KH207-23			
<b>Dimensions (mm)</b>																				
12	BLFL1	37.45	KHLFL201	38.85	81	63.5	9.5	18	7	56	25.5	31.6	22	28.6	M6	B1	KH201	LFL3	0.66	
15	BLFL2		KHLFL202													B2	KH202			0.64
17	BLFL3		KHLFL203													B3	KH203			0.60
20	BLFL4	37.95	KHLFL204	40.55	90	71.5	11	20	10	63	28.7	34.5	24.7	31	M8	B4	KH204	LFL4	0.76	
25	BLFL5	41.20	KHLFL205	43.10	95	76	11	20	10	69	30.5	34.5	27	31	M8	B5	KH205	LFL5	0.98	
30	BLFL6	56.25	KHLFL206	59.50	113	90.5	12	22.5	12	79	34.3	38.7	30.3	35.7	M10	B6	KH206	LFL6	1.42	
35	BLFL7	70.85	KHLFL207	78.25	122	100	13	24	12	89	37.4	42.4	32.9	38.9	M10	B7	KH207	LFL7	2.05	

Lubrication fitting tap size for 1" and smaller shaft sizes, 1/4-28 UNF; for all other sizes, 1/8-27 NPT

**INTERCHANGES: BLF    ALF    SALF**

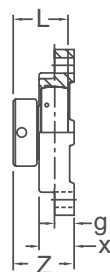
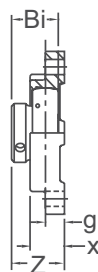
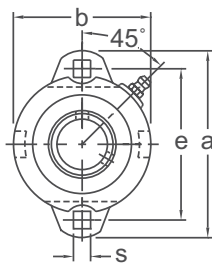


## TWO-BOLT FLANGE UNITS

## BFX / KHFX 200

NORMAL DUTY

**Set-Screw/Eccentric Locking  
Narrow Inner Ring  
Ductile Iron Housing  
Insert Detail-pg.125,126  
Inch and Metric**



BFX 200 Type Set-Screw Locking      KHFX 200 Type Eccentric Collar Locking



Shaft Diam. (in.)	AMI Unit # Complete with B 200 Type	List Price	AMI Unit # Complete with KH 200 Type	List Price	Dimensions (in.)										Bolt Size (in.)	Bearing #		Housing #	Weight (lb.)
					a	e	g	x	s	b	Z		Bi	L		B	KH		
											BFX	KHFX							
1/2	BFX201-8	50.55	KHFX201-8	51.95	3-3/16	2-1/2	3/8	23/32	9/32	2-3/16	1.004	1.244	0.866	1-1/8	1/4	B1-8	KH201-8	FX203	0.57
5/8	BFX202-10		KHFX202-10		B2-10	KH202-10	0.55												
3/4	BFX204-12	51.05	KHFX204-12	52.45	3-9/16	2-13/16	27/64	25/32	11/32	2-15/32	1.130	1.358	0.972	1-7/32	5/16	B4-12	KH204-12	FX204	0.62
7/8	BFX205-14	53.55	KHFX205-14	55.45	3-3/4	3	27/64	25/32	11/32	2-1/2	1.201	1.358	1.063	1-7/32	5/16	B5-14	KH205-14	FX205	0.79
15/16	BFX205-15		KHFX205-15													B5-15	KH205-15		
1	BFX205-16		KHFX205-16													B5-16	KH205-16		
1-1/16	BFX206-17	64.95	—	68.20	4-7/16	3-9/16	15/32	7/8	13/32	3-3/32	1.350	1.524	1.193	1-13/32	3/8	B6-17	—	FX206	1.23
1-1/8	BFX206-18		KHFX206-18													B6-18	KH206-18		
1-3/16	BFX206-19		KHFX206-19													B6-19	KH206-19		
1-1/4	BFX206-20		KHFX206-20													B6-20	KH206-20		
1-1/4	BFX207-20	79.60	KHFX207-20	87.00	4-13/16	3-15/16	1/2	15/16	13/32	3-1/2	1.472	1.669	1.295	1-17/32	3/8	B7-20	KH207-20	FX207	1.74
1-5/16	BFX207-21		KHFX207-21													B7-21	KH207-21		
1-3/8	BFX207-22		KHFX207-22													B7-22	KH207-22		
1-7/16	BFX207-23		KHFX207-23													B7-23	KH207-23		

Dimensions (mm)																			
12	BFX201	50.55	KHFX201	51.95	81	64	10	18	7	56	25.5	31.6	22	28.6	M6	B1	KH201	FX203	0.58
15	BFX202		KHFX202													B2	KH202		0.56
17	BFX203		KHFX203													B3	KH203		0.54
20	BFX204	51.05	KHFX204	52.45	90	71	11	20	9	63	28.7	34.5	24.7	31	M8	B4	KH204	FX204	0.62
25	BFX205	53.55	KHFX205	55.45	95	76	11	20	9	63.5	30.5	34.5	27	31	M8	B5	KH205	FX205	0.80
30	BFX206	64.95	KHFX206	68.20	113	90	12	22.5	10.3	78.6	34.3	38.7	30.3	35.7	M10	B6	KH206	FX206	1.25
35	BFX207	79.60	KHFX207	87.00	122	100	13	24	10.3	89	37.4	42.4	32.9	38.9	M10	B7	KH207	FX207	1.76

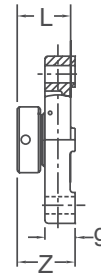
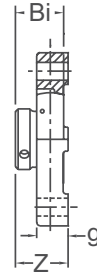
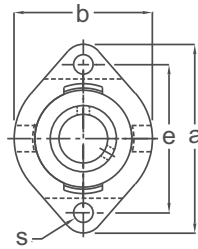
Lubrication fitting tap size 1/4-28 UNF

**INTERCHANGES: VF2S-1M   LFT-SC   VFTD   FB160   FXW-U   LFT   VF2E-1M   LFT-SXV   LFTE-E**

# BLCTE / KHLCTE 200 TWO-BOLT FLANGE UNITS



NORMAL DUTY



BLCTE 200 Type Set-Screw Locking      KHLCTE 200 Type Eccentric Collar Locking

**Set-Screw/Eccentric Locking  
Narrow Inner Ring  
Cast Iron Housing  
Non-Relube  
Insert Detail-pg.125,126  
Inch and Metric**

Shaft Diam. (in.)	AMI Unit # Complete with B 200 Type	List Price	AMI Unit # Complete with KH 200 Type	List Price	Dimensions (in.)								Bolt Size (in.)	Bearing #		Housing #	Weight (lb.)	
					a	e	g	s	b	Z		Bi		L	B			KH
										BLCTE	KHLCTE							
1/2	BLCTE201-8	50.30	KHLCTE201-8	51.70	3-3/16	2-1/2	19/32	9/32	2-5/16	0.965	1.204	0.866	1-1/8	1/4	B1-8	KH201-8	LCTE203	0.53
5/8	BLCTE202-10		KHLCTE202-10		3-9/16	2-13/16	43/64	25/64	2-5/8	1.071	1.299	0.972	1-7/32	5/16	B2-10	KH202-10		
3/4	BLCTE204-12	50.80	KHLCTE204-12	52.20	3-9/16	2-13/16	43/64	25/64	2-5/8	1.071	1.299	0.972	1-7/32	5/16	B4-12	KH204-12	LCTE204	0.98
7/8	BLCTE205-14	53.65	KHLCTE205-14	55.55	3-13/16	3	11/16	25/64	2-51/64	1.161	1.319	1.063	1-7/32	5/16	B5-14	KH205-14	LCTE205	1.18
15/16	BLCTE205-15		KHLCTE205-15												B5-15	KH205-15		
1	BLCTE205-16		KHLCTE205-16												B5-16	KH205-16		
1-1/16	BLCTE206-17	74.70	—	77.95	4-7/16	3-9/16	13/16	15/32	3-5/16	1.350	1.524	1.193	1-13/32	3/8	B6-17	—	LCTE206	1.85
1-1/8	BLCTE206-18		KHLCTE206-18												B6-18	KH206-18		
1-3/16	BLCTE206-19		KHLCTE206-19												B6-19	KH206-19		
1-1/4	BLCTE206-20		KHLCTE206-20												B6-20	KH206-20		
1-1/4	BLCTE207-20	86.90	KHLCTE207-20	94.30	4-31/32	3-15/16	7/8	15/32	3-11/16	1.453	1.649	1.295	1-17/32	3/8	B7-20	KH207-20	LCTE207	2.43
1-5/16	BLCTE207-21		KHLCTE207-21												B7-21	KH207-21		
1-3/8	BLCTE207-22		KHLCTE207-22												B7-22	KH207-22		
1-7/16	BLCTE207-23		KHLCTE207-23												B7-23	KH207-23		
Dimensions (mm)																		
12	BLCTE201	50.30	KHLCTE201	51.70	81	63.5	15	7	59	24.5	30.6	22	28.6	M6	B1	KH201	LCTE203	0.53
15	BLCTE202		KHLCTE202												B2	KH202		
17	BLCTE203		KHLCTE203												B3	KH203		
20	BLCTE204	50.80	KHLCTE204	52.20	90	71.4	17	10	67	27.2	33.0	24.7	31	M8	B4	KH204	LCTE204	0.98
25	BLCTE205	53.65	KHLCTE205	55.55	97	76.2	17.5	10	71	29.5	33.5	27	31	M8	B5	KH205	LCTE205	1.18
30	BLCTE206	74.70	KHLCTE206	77.95	113	90.5	20.5	12	84	34.3	38.7	30.3	35.7	M10	B6	KH206	LCTE206	1.85
35	BLCTE207	86.90	KHLCTE207	94.30	126	100	22	12	94	36.9	41.9	32.9	38.9	M10	B7	KH207	LCTE207	2.43

**INTERCHANGES: FLCT ASFD FLCTEY AELFD**

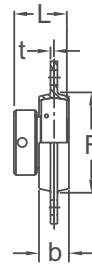
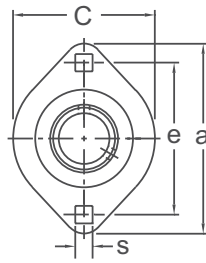


PRESSED STEEL TWO-BOLT FLANGE UNITS

BPFL / KHPFL 200

NORMAL DUTY

Set-Screw/Eccentric Locking  
Narrow Inner Ring  
Pressed Steel Housing  
Non-Relube  
Insert Detail-pg.125,126  
Inch and Metric



BPFL 200 Type  
Set-Screw Locking

KHPFL 200 Type  
Eccentric Collar Locking

Shaft Diam. (in.)	AMI Unit # Complete with B 200 Type	List Price	AMI Unit # Complete with KH 200 Type	List Price	Dimensions (in.)										Stamping Load Limit (lbs.)	Bolt Size (in.)	Bearing #		Housing #	Weight (lb.)
					a	e	t	b	s	C	F(Min)	Bi	L	B			KH			
					1/2 5/8 3/4 7/8 15/16 1 1-1/16 1-1/8 1-3/16 1-1/4 1-1/4 1-5/16 1-3/8 1-7/16	BPFL1-8 BPFL2-10 BPFL4-12 BPFL5-14 BPFL5-15 BPFL5-16 BPFL6-17 BPFL6-18 BPFL6-19 BPFL6-20 BPFL7-20 BPFL7-21 BPFL7-22 BPFL7-23	36.75 37.25 38.00 49.00 61.45	KHPFL201-8 KHPFL202-10 KHPFL204-12 KHPFL205-14 KHPFL205-15 KHPFL205-16 KHPFL206-18 KHPFL206-19 KHPFL206-20 KHPFL207-20 KHPFL207-21 KHPFL207-22 KHPFL207-23	38.15 38.65 39.90 52.25 68.85	3-3/16 3-9/16 3-3/4 4-7/16 4-15/16	2-1/2 2-13/16 3 3-9/16 3-15/16	0.079 0.079 0.079 0.102 0.102	9/16 5/8 11/16 11/16 13/16	9/32 11/32 11/32 13/32 13/32			2-5/16 2-5/8 2-51/64 3-5/16 3-11/16	1-15/16 2-3/16 2-3/8 2-13/16 3-3/16		
12 15 17 20 25 30 35	BPFL1 BPFL2 BPFL3 BPFL4 BPFL5 BPFL6 BPFL7	36.75 37.25 38.00 49.00 61.45	KHPFL201 KHPFL202 KHPFL203 KHPFL204 KHPFL205 KHPFL206 KHPFL207	38.15 38.65 39.90 52.25 68.85	81 90 95 113 125	63.5 71.5 76 90.5 100	2 2 2.6 2.6	14 16 18 18 20	7 9 9 11 11	59 67 71 84 94	49 56 60 71 81	22 24.7 27 30.3 32.9	28.6 31 31 35.7 38.9	600 700 800 1100 1400	M6 M8 M8 M10 M10	B1 B2 B3 B4 B5 B6 B7	KH201 KH202 KH203 KH204 KH205 KH206 KH207	PFL3 PFL4 PFL5 PFL6 PFL7	0.59 0.57 0.60 0.73 0.88 1.36 1.78	

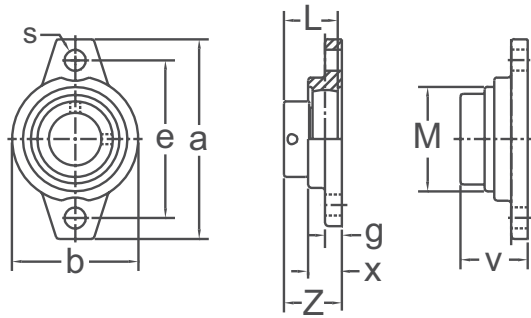
INTERCHANGES: SSF2S F2B-SL SBPFL FB110S RATY FPS2-25 SSFT SSF2E F2B-SLX RAT FT-FM SSFT-E





# SILVER SERIES TWO-BOLT FLANGE UNITS W/COVERS UFL / KFL / MUFL 000

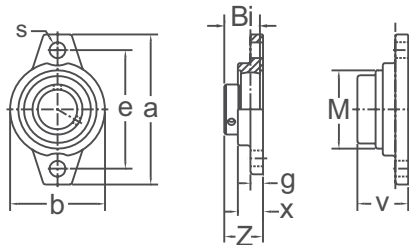
**Eccentric Locking**  
**Extra Narrow Inner Ring**  
**ZDC Alloy Housing**  
**52100 Bearing Steel**  
**Non-Relube**  
**Insert detail-pg.137**  
**Metric**



Unit w/cover

Shaft Diam. (mm)	AMI Unit #	List Price		Dimensions (mm)										Bolt Size (mm)	Bearing #	Housing #	Weight (lb.)
		No Cover	With Cover C (CE)	a	e	g	x	s	b	Z	L	v	M				
10	UFL000	41.50	45.65	60	45	5.5	11.5	7	36	19	17.5	22	29	M6	U000	FL000	0.14
12	UFL001	42.50	46.65	63	48	5.5	11.5	7	38	19	17.5	22	31		U001	FL001	0.17
15	UFL002	45.30	49.45	67	53	6.5	13	7	42	20.5	18.5	24	35		U002	FL002	0.22
17	UFL003	48.80	53.05	71	56	7	14	7	46	22.5	20.5	26	38	M6	U003	FL003	0.29
20	UFL004	51.80	56.05	90	71	8	16	10	55	26.5	24.5	31	45	M8	U004	FL04-5	0.46
25	UFL005	59.40	63.65	95	75	8	16	10	60	27.5	25.5	32	50	M8	U005	FL05-6	0.54
30	UFL006	72.20	78.20	112	85	9	18	13	70	29	26.5	34	58	M10	U006	FL06-7	0.79
35	UFL007	83.85	90.10	122	95	10	20	13	80	32.5	29.5	-	-		U007	FL07-8	1.10

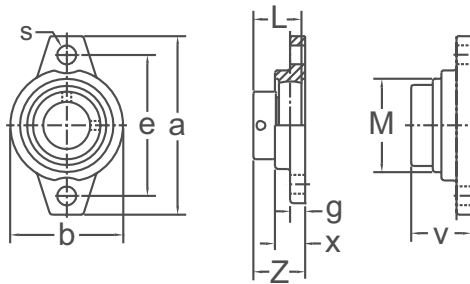
**Set-Screw Locking**  
**Extra Narrow Inner Ring**  
**ZDC Alloy Housing**  
**52100 Bearing Steel**  
**Non-Relube**  
**Insert detail-pg.137**  
**Metric**



Unit w/cover

Shaft Diam. (mm)	AMI Unit #	List Price		Dimensions (mm)										Bolt Size (mm)	Bearing #	Housing #	Weight (lb.)
		No Cover	With Cover C (CE)	a	e	g	x	s	b	Z	Bi	v	M				
10	KFL000	41.50	45.65	60	45	5.5	11.5	7	36	15.5	14	22	29	M6	K000	FL000	0.14
12	KFL001	45.30	49.45	63	48	5.5	11.5	7	38	16	14.5	22	31		K001	FL001	0.17
15	KFL002	48.60	52.75	67	53	6.5	13	7	42	18.6	16.5	24	35		K002	FL002	0.22
17	KFL003	52.95	57.25	71	56	7	14	7	46	19.5	17.5	26	38	M6	K003	FL003	0.29
20	KFL004	60.60	64.75	90	71	8	16	10	55	23	21	31	45	M8	K004	FL04-5	0.46
25	KFL005	69.80	74.00	95	75	8	16	10	60	24.5	22.5	32	50	M8	K005	FL05-6	0.54
30	KFL006	83.00	89.00	112	85	9	18	13	70	27	24.5	34	58	M10	K006	FL06-7	0.79

**Eccentric Locking**  
**Extra Narrow Inner Ring**  
**ZDC Alloy with Electroless Chromate Finish Housing**  
**440C Stainless Steel Bearing**  
**Non-Relube**  
**Insert detail-pg.137**  
**Metric**



Unit w/cover

Shaft Diam. (mm)	AMI Unit #	List Price		Dimensions (mm)										Bolt Size (mm)	Bearing #	Housing #	Weight (lb.)
		No Cover	With Cover C (CE)	a	e	g	x	s	b	Z	Bi	v	M				
10	MUFL000	41.50	45.65	60	45	5.5	11.5	7	36	15.5	14	22	29	M6	MU000	FL000Z3	0.14
12	MUFL001	45.30	49.45	63	48	5.5	11.5	7	38	16	14.5	22	31		MU001	FL001Z3	0.17
15	MUFL002	48.60	52.75	67	53	6.5	13	7	42	18.6	16.5	24	35		MU002	FL002Z3	0.22
17	MUFL003	52.95	57.25	71	56	7	14	7	46	19.5	17.5	26	38	M6	MU003	FL003Z3	0.29
20	MUFL004	60.60	64.75	90	71	8	16	10	55	23	21	31	45	M8	MU004	FL04-5Z3	0.46
25	MUFL005	69.80	74.00	95	75	8	16	10	60	24.5	22.5	32	50	M8	MU005	FL05-6Z3	0.54
30	MUFL006	83.00	89.00	112	85	9	18	13	70	27	24.5	34	58	M10	MU006	FL06-7Z3	0.79

SILVER SERIES