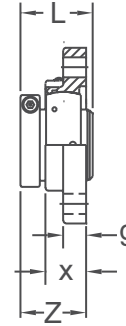
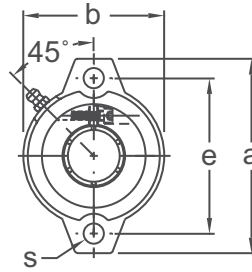




NORMAL DUTY



Concentric Locking
52100 Bearing Steel
w/Black Oxide Finish
Cast Iron Housing
Insert detail-pg.133
Inch and Metric

Shaft Diam. (in.)	AMI Unit #	List Price	Dimensions (in.)								Bolt Size (in.)	Bearing #	Housing #	Weight (lb.)
			a	e	g	x	s	b	Z	L				
3/4	UELFL204-12	74.20	3-9/16	2-13/16	7/16	25/32	25/64	2-15/32	1.232	1.299	5/16	UE204-12	LFL4	0.92
7/8	UELFL205-14	76.60	3-3/4	3	7/16	25/32	25/64	2-23/32	1.264	1.394	5/16	UE205-14	LFL5	1.07
15/16	UELFL205-15											UE205-15		
1	UELFL205-16											UE205-16		
1-1/8	UELFL206-18	99.20	4-7/16	3-9/16	15/32	7/8	15/32	3-3/32	1.413	1.567	3/8	UE206-18	LFL6	1.58
1-3/16	UELFL206-19											UE206-19		
1-1/4	UELFL206-20											UE206-20		
1-1/4	UELFL207-20	129.90	4-13/16	3-15/16	1/2	15/16	15/32	3-1/2	1.551	1.728	3/8	UE207-20	LFL7	2.02
1-3/8	UELFL207-22											UE207-22		
1-7/16	UELFL207-23											UE207-23		
Dimensions (mm)														
20	UELFL204	74.20	90	71.5	11	20	10	63	31.3	33.0	M8	UE204	LFL4	0.92
25	UELFL205	76.60	95	76.2	11	20	10	69	32.1	35.4	M8	UE205	LFL5	1.07
30	UELFL206	99.20	113	90.5	12	22.5	12	79	35.9	39.8	M10	UE206	LFL6	1.58
35	UELFL207	129.90	122	100	13	24	12	89	39.4	43.9	M10	UE207	LFL7	2.02

Lubrication fitting tap size for 1" and smaller shaft sizes, 1/4-28 UNF; for all other sizes, 1/8-27 NPT

INTERCHANGES: AMI EXCLUSIVE

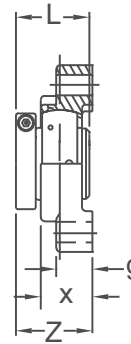
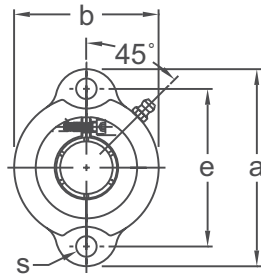


ACCU-LOC® TWO-BOLT FLANGE UNITS

UETFT 200

NORMAL DUTY

Concentric Locking
52100 Bearing Steel
w/Black Oxide Finish
Cast Iron Housing
Insert detail-pg.133
Inch and Metric



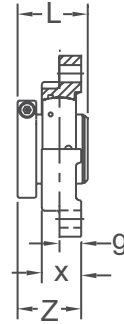
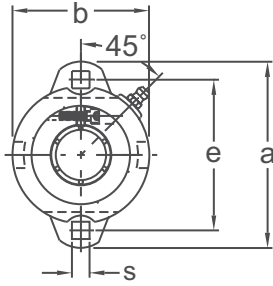
Shaft Diam. (in.)	AMI Unit #	List Price	Dimensions (in.)								Bolt Size (in.)	Bearing #	Housing #	Weight (lb.)
			a	e	g	x	s	b	Z	L				
7/8	UETFT205-14	129.90	3-3/4	3	11/16	63/64	25/64	2-3/4	1.456	1.394	3/8	UE205-14	TFT205	1.3
15/16	UETFT205-15											UE205-15		
1	UETFT205-16											UE205-16		
1-1/8	UETFT206-18	160.25	4-7/16	3-9/16	13/16	1-1/8	25/64	3-1/4	1.629	1.567	3/8	UE206-18	TFT206	2.3
1-3/16	UETFT206-19											UE206-19		
1-1/4	UETFT206-20											UE206-20		
1-1/4	UETFT207-20	183.10	4-7/8	3-15/16	7/8	1-7/32	25/64	3-11/16	1.789	1.728	3/8	UE207-20	TFT207	3.0
1-3/8	UETFT207-22											UE207-22		
1-7/16	UETFT207-23											UE207-23		
Dimensions (mm)														
25	UETFT205	129.90	95.3	76.2	17.5	25.0	10	70.0	37.0	35.4	M8	UE205	TFT205	1.3
30	UETFT206	160.25	112.7	90.5	20.6	28.6	10	82.6	41.4	39.8		UE206	TFT206	2.3
35	UETFT207	183.10	123.8	100	22.2	31.0	10	93.7	45.4	43.9		UE207	TFT207	3.0

Lubrication fitting tap size for 1" and smaller shaft sizes, 1/4-28 UNF; for all other sizes, 1/8-27 NPT

INTERCHANGES: TFT-T



NORMAL DUTY



Concentric Locking
52100 Bearing Steel
w/Black Oxide Finish
Ductile Iron Housing
Insert detail-pg.133
Inch and Metric

Shaft Diam. (in.)	AMI Unit #	List Price	Dimensions (in.)								Bolt Size (in.)	Bearing #	Housing #	Weight (lb.)
			a	e	g	x	s	b	Z	L				
3/4	UEFX204-12	74.20	3-9/16	2-13/16	27/64	25/32	11/32	2-15/32	1.232	1.299	5/16	UE204-12	FX204	0.92
7/8	UEFX205-14	76.60	3-3/4	3	27/64	25/32	11/32	2-1/2	1.264	1.394	5/16	UE205-14	FX205	1.07
15/16	UEFX205-15											UE205-15		
1	UEFX205-16											UE205-16		
1-1/8	UEFX206-18	99.20	4-7/16	3-9/16	15/32	7/8	13/32	3-3/32	1.413	1.567	3/8	UE206-18	FX206	1.58
1-3/16	UEFX206-19											UE206-19		
1-1/4	UEFX206-20											UE206-20		
1-1/4	UEFX207-20	129.90	4-13/16	3-15/16	1/2	15/16	13/32	3-1/2	1.551	1.728	3/8	UE207-20	FX207	2.02
1-3/8	UEFX207-22											UE207-22		
1-7/16	UEFX207-23											UE207-23		
Dimensions (mm)														
20	UEFX204	74.20	90	71	11	20	9	63	31.3	33.0	M8	UE204	FX204	0.92
25	UEFX205	76.60	95	76	11	20	9	63.5	32.1	35.4	M8	UE205	FX205	1.07
30	UEFX206	99.20	113	90	12	22.5	10.3	78.6	35.9	39.8	M10	UE206	FX206	1.58
35	UEFX207	129.90	122	100	13	24	10.3	89	39.4	43.9	M10	UE207	FX207	2.02

Lubrication fitting tap size 1/4-28 UNF

INTERCHANGES: LFT-DL