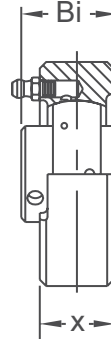
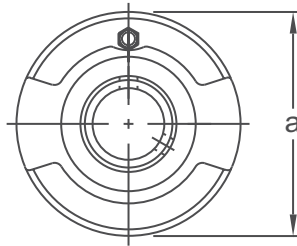




NORMAL DUTY



Set-Screw Locking
Eccentric Locking Available
Wide Inner Ring
Cast Iron Housing
Insert Detail-pg.121-122
Inch and Metric

Shaft Diam. (in.)	AMI Unit #	List Price	Dimensions (in.)			Bearing #	Housing #	Weight (lb.)
			a	x	Bi			
1/2	UCLC201-8	63.40	2-11/16	7/8	1.024	UCW201-8	LC203	1.12
5/8	UCLC202-10					UCW202-10		1.10
3/4	UCLC204-12	63.40	2-15/16	7/8	1.220	UC204-12	LC204	1.28
7/8	UCLC205-14	68.50	3-1/8	1-1/32	1.339	UC205-14	LC205	1.61
15/16	UCLC205-15					UC205-15		
1	UCLC205-16					UC205-16		
1-1/16	UCLC206-17	89.80	3-1/2	1-3/32	1.500	UC206-17	LC206	2.09
1-1/8	UCLC206-18					UC206-18		
1-3/16	UCLC206-19					UC206-19		
1-1/4	UCLC206-20					UC206-20		
1-1/4	UCLC207-20	105.80	3-7/8	1-7/32	1.689	UC207-20	LC207	2.64
1-5/16	UCLC207-21					UC207-21		
1-3/8	UCLC207-22					UC207-22		
1-7/16	UCLC207-23					UC207-23		
1-1/2	UCLC208-24	129.25	4-3/16	1-15/32	1.937	UC208-24	LC208	3.74
1-9/16	UCLC208-25					UC208-25		
1-5/8	UCLC209-26	140.40	4-3/8	1-7/16	1.937	UC209-26	LC209	3.74
1-11/16	UCLC209-27					UC209-27		
1-3/4	UCLC209-28					UC209-28		
1-7/8	UCLC210-30	165.15	4-9/16	1-15/32	2.031	UC210-30	LC210	4.18
1-15/16	UCLC210-31					UC210-31		
2	UCLC210-32					UC210-32		
2	UCLC211-32	212.20	4-15/16	1-19/32	2.189	UC211-32	LC211	5.28
2-1/8	UCLC211-34					UC211-34		
2-3/16	UCLC211-35					UC211-35		
2-1/4	UCLC212-36	301.70	5-7/8	1-5/8	2.563	UC212-36	LC212	8.36
2-3/8	UCLC212-38					UC212-38		
2-7/16	UCLC212-39					UC212-39		
2-1/2	UCLC213-40	394.90	5-7/8	1-5/8	2.563	UC213-40	LC213	7.92
Dimensions (mm)								
12	UCC201	63.40	72	20	31	UC201	C204	1.20
15	UCC202					UC202		1.16
17	UCC203					UC203		1.14
20	UCC204	63.40	72	20	31	UC204	C204	1.09
25	UCC205	68.50	80	22	34	UC205	C205	1.45
30	UCC206	89.80	85	27	38.1	UC206	C206	1.83
35	UCC207	105.80	90	28	42.9	UC207	C207	2.07
40	UCC208	129.25	100	30	49.2	UC208	C208	2.68
45	UCC209	140.40	110	31	49.2	UC209	C209	3.35
50	UCC210	165.15	120	33	51.6	UC210	C210	4.24
55	UCC211	212.20	125	35	55.6	UC211	C211	4.68
60	UCC212	301.70	130	38	65.1	UC212	C212	5.58
65	UCC213	394.90	140	40	65.1	UC213	C213	6.69

NOTE: Recommended housing bore:
Rotating Shaft: nominal +0.001" ~ +0.003" (+0.025 mm ~ +0.076 mm).
Stationary Shaft: nominal +0.000" ~ -0.002" (+0.000 mm ~ -0.050 mm)
Lubrication fitting tap size 1/4-28 UNF

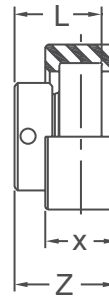
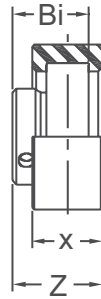
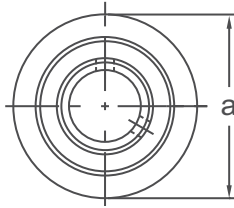
INTERCHANGES: RC UCC SC



CYLINDRICAL RUBBER CARTRIDGE UNITS BRRCSM / KHRRCSM 200

NORMAL DUTY

Set-Screw/Eccentric Locking
 Narrow Inner Ring
 Rubber Housing
 Non-Relube
 Insert Detail-pg.125-126
 Inch and Metric



BRRCSM 200 Type
Set-Screw Locking

KHRRCSM 200 Type
Eccentric Collar Locking

Shaft Diam. (in.)	AMI Unit # Complete with B 200 Type	List Price	AMI Unit # Complete with KH 200 Type	List Price	Dimensions (in.)						Bearing #		Housing #	Weight (lb.)
					a	x	Z		Bi	L	B	KHR		
							BRRCSM	KHRRCSM.						
1/2	BRRCSM201-8	35.90	KHRRCSM201-8	39.10	2.559	0.984	1.122	1.362	0.866	1-1/8	BR1-8	KHR201-8	RCSM203	0.40
5/8	BRRCSM202-10		KHRRCSM202-10				1.189	1.417			BR2-10	KHR202-10		
3/4	BRRCSM204-12	35.90	KHRRCSM204-12	43.00	2.559	0.984	1.189	1.417	0.972	1-7/32	BR4-12	KHR204-12	RCSM204	0.40
7/8	BRRCSM205-14	41.45	KHRRCSM205-14	46.10	2.559	0.984	1.260	1.417	1.063	1-7/32	BR5-14	KHR205-14	RCSM205	0.60
15/16	BRRCSM205-15		KHRRCSM205-15								BR5-15	KHR205-15		
1	BRRCSM205-16		KHRRCSM205-16								BR5-16	KHR205-16		
1-1/16	—	—	*KHRRCSM206-17	59.75	2.835	1.102	1.429	1.602	1.193	1-13/32	BR6-17	KHR206-17	RCSM206	0.80
1-1/8	BRRCSM206-18	KHRRCSM206-18	BR6-18								KHR206-18			
1-3/16	BRRCSM206-19	KHRRCSM206-19	BR6-19								KHR206-19			
1-1/4	BRRCSM206-20	KHRRCSM206-20	BR6-20								KHR206-20			
Dimensions (mm)														
12	BRRCSM201	35.90	KHRRCSM201	39.10	65	25	28.5	34.6	22.0	28.6	BR1	KHR201	RCSM203	0.40
15	BRRCSM202		KHRRCSM202								BR2	KHR202		
17	BRRCSM203		KHRRCSM203								BR3	KHR203		
20	BRRCSM204	35.90	KHRRCSM204	43.00	65	25	30.2	36.0	24.7	31.0	BR4	KHR204	RCSM204	0.40
25	BRRCSM205	41.45	KHRRCSM205	46.10	65	25	32.0	36.0	27.0	31.0	BR5	KHR205	RCSM205	0.40
30	BRRCSM206	56.70	KHRRCSM206	59.75	72	28	36.3	40.7	30.3	35.7	BR6	KHR206	RCSM206	0.60

*Consult factory for availability

INTERCHANGES: RCSM RCSMB