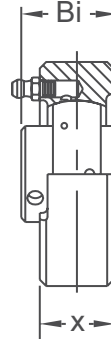
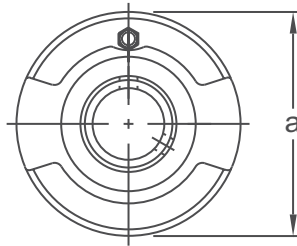




NORMAL DUTY



Set-Screw Locking  
Eccentric Locking Available  
Wide Inner Ring  
Cast Iron Housing  
Insert Detail-pg.121-122  
Inch and Metric

Shaft Diam. (in.)	AMI Unit #	List Price	Dimensions (in.)			Bearing #	Housing #	Weight (lb.)
			a	x	Bi			
1/2	UCLC201-8	63.40	2-11/16	7/8	1.024	UCW201-8	LC203	1.12
5/8	UCLC202-10					UCW202-10		1.10
3/4	UCLC204-12	63.40	2-15/16	7/8	1.220	UC204-12	LC204	1.28
7/8	UCLC205-14	68.50	3-1/8	1-1/32	1.339	UC205-14	LC205	1.61
15/16	UCLC205-15					UC205-15		
1	UCLC205-16					UC205-16		
1-1/16	UCLC206-17	89.80	3-1/2	1-3/32	1.500	UC206-17	LC206	2.09
1-1/8	UCLC206-18					UC206-18		
1-3/16	UCLC206-19					UC206-19		
1-1/4	UCLC206-20					UC206-20		
1-1/4	UCLC207-20	105.80	3-7/8	1-7/32	1.689	UC207-20	LC207	2.64
1-5/16	UCLC207-21					UC207-21		
1-3/8	UCLC207-22					UC207-22		
1-7/16	UCLC207-23					UC207-23		
1-1/2	UCLC208-24	129.25	4-3/16	1-15/32	1.937	UC208-24	LC208	3.74
1-9/16	UCLC208-25					UC208-25		
1-5/8	UCLC209-26	140.40	4-3/8	1-7/16	1.937	UC209-26	LC209	3.74
1-11/16	UCLC209-27					UC209-27		
1-3/4	UCLC209-28					UC209-28		
1-7/8	UCLC210-30	165.15	4-9/16	1-15/32	2.031	UC210-30	LC210	4.18
1-15/16	UCLC210-31					UC210-31		
2	UCLC210-32					UC210-32		
2	UCLC211-32	212.20	4-15/16	1-19/32	2.189	UC211-32	LC211	5.28
2-1/8	UCLC211-34					UC211-34		
2-3/16	UCLC211-35					UC211-35		
2-1/4	UCLC212-36	301.70	5-7/8	1-5/8	2.563	UC212-36	LC212	8.36
2-3/8	UCLC212-38					UC212-38		
2-7/16	UCLC212-39					UC212-39		
2-1/2	UCLC213-40	394.90	5-7/8	1-5/8	2.563	UC213-40	LC213	7.92
Dimensions (mm)								
12	UCC201	63.40	72	20	31	UC201	C204	1.20
15	UCC202					UC202		1.16
17	UCC203					UC203		1.14
20	UCC204	63.40	72	20	31	UC204	C204	1.09
25	UCC205	68.50	80	22	34	UC205	C205	1.45
30	UCC206	89.80	85	27	38.1	UC206	C206	1.83
35	UCC207	105.80	90	28	42.9	UC207	C207	2.07
40	UCC208	129.25	100	30	49.2	UC208	C208	2.68
45	UCC209	140.40	110	31	49.2	UC209	C209	3.35
50	UCC210	165.15	120	33	51.6	UC210	C210	4.24
55	UCC211	212.20	125	35	55.6	UC211	C211	4.68
60	UCC212	301.70	130	38	65.1	UC212	C212	5.58
65	UCC213	394.90	140	40	65.1	UC213	C213	6.69

**NOTE:** Recommended housing bore:  
Rotating Shaft: nominal +0.001" ~ +0.003" (+0.025 mm ~ +0.076 mm).  
Stationary Shaft: nominal +0.000" ~ -0.002" (+0.000 mm ~ -0.050 mm)  
Lubrication fitting tap size 1/4-28 UNF

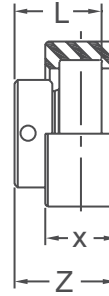
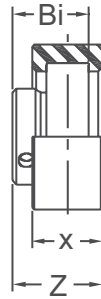
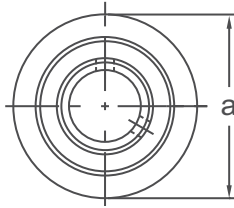
**INTERCHANGES:** RC UCC SC



# CYLINDRICAL RUBBER CARTRIDGE UNITS **BRRCSM / KHRRCSM 200**

NORMAL DUTY

**Set-Screw/Eccentric Locking**  
**Narrow Inner Ring**  
**Rubber Housing**  
**Non-Relube**  
**Insert Detail-pg.125-126**  
**Inch and Metric**



BRRCSM 200 Type  
Set-Screw Locking

KHRRCSM 200 Type  
Eccentric Collar Locking

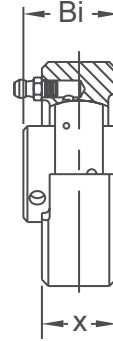
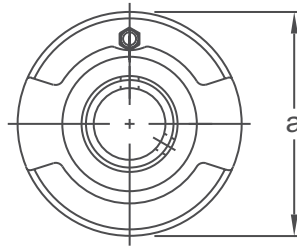
Shaft Diam. (in.)	AMI Unit # Complete with B 200 Type	List Price	AMI Unit # Complete with KH 200 Type	List Price	Dimensions (in.)						Bearing #		Housing #	Weight (lb.)
					a	x	Z		Bi	L	B	KHR		
							BRRCSM	KHRRCSM.						
1/2	BRRCSM201-8	35.90	KHRRCSM201-8	39.10	2.559	0.984	1.122	1.362	0.866	1-1/8	BR1-8	KHR201-8	RCSM203	0.40
5/8	BRRCSM202-10		KHRRCSM202-10				1.189	1.417			BR2-10	KHR202-10		
3/4	BRRCSM204-12	35.90	KHRRCSM204-12	43.00	2.559	0.984	1.189	1.417	0.972	1-7/32	BR4-12	KHR204-12	RCSM204	0.40
7/8	BRRCSM205-14	41.45	KHRRCSM205-14	46.10	2.559	0.984	1.260	1.417	1.063	1-7/32	BR5-14	KHR205-14	RCSM205	0.60
15/16	BRRCSM205-15		KHRRCSM205-15								BR5-15	KHR205-15		
1	BRRCSM205-16		KHRRCSM205-16								BR5-16	KHR205-16		
1-1/16	—	—	*KHRRCSM206-17	59.75	2.835	1.102	1.429	1.602	1.193	1-13/32	BR6-17	KHR206-17	RCSM206	0.80
1-1/8	BRRCSM206-18	KHRRCSM206-18	BR6-18								KHR206-18			
1-3/16	BRRCSM206-19	KHRRCSM206-19	BR6-19								KHR206-19			
1-1/4	BRRCSM206-20	KHRRCSM206-20	BR6-20								KHR206-20			
Dimensions (mm)														
12	BRRCSM201	35.90	KHRRCSM201	39.10	65	25	28.5	34.6	22.0	28.6	BR1	KHR201	RCSM203	0.40
15	BRRCSM202		KHRRCSM202								BR2	KHR202		
17	BRRCSM203		KHRRCSM203								BR3	KHR203		
20	BRRCSM204	35.90	KHRRCSM204	43.00	65	25	30.2	36.0	24.7	31.0	BR4	KHR204	RCSM204	0.40
25	BRRCSM205	41.45	KHRRCSM205	46.10	65	25	32.0	36.0	27.0	31.0	BR5	KHR205	RCSM205	0.40
30	BRRCSM206	56.70	KHRRCSM206	59.75	72	28	36.3	40.7	30.3	35.7	BR6	KHR206	RCSM206	0.60

\*Consult factory for availability

**INTERCHANGES: RCSM RCSMB**



MEDIUM DUTY

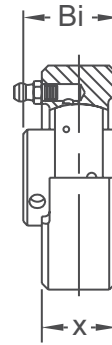
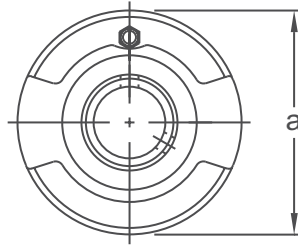


Set-Screw Locking  
Wide Inner Ring  
Cast Iron Housing  
Insert Detail-pg.121-122  
Inch Sizes  
Metric Sizes Available

Shaft Diam. (in.)	AMI Unit #	List Price	Dimensions (in.)			Bearing #	Housing #	Weight (lb.)
			A	X	Bi			
1	UCLCX05-16	112.75	3-1/2	1-3/32	1.500	UCX05-16	LC206	2.12
1-1/8	UCLCX06-18	121.15	3-7/8	1-7/32	1.689	UCX06-18	LC207	2.92
1-3/16	UCX06-19					2.88		
1-1/4	UCX06-20					2.84		
1-1/4	UCLCX07-20					3.84		
1-3/8	UCLCX07-22	148.20	4-3/16	1-15/32	1.937	UCX07-22	LC208	3.68
1-7/16	UCLCX07-23	162.65	4-3/8	1-7/16	1.937	UCX07-23	LC209	3.64
1-1/2	UCLCX08-24					4.00		
1-5/8	UCLCX09-26					4.56		
1-11/16	UCLCX09-27					4.44		
1-3/4	UCLCX09-28	187.65	4-9/16	1-15/32	2.031	UCX09-28	LC210	4.32
1-7/8	UCLCX10-30	233.15	4-15/16	1-19/32	2.189	UCX10-30	LC211	5.44
1-15/16	UCLCX10-31					5.32		
2	UCLCX10-32					5.24		
2	UCLCX11-32					8.56		
2-3/16	UCLCX11-35	331.00	5-7/8	1-5/8	2.563	UCX11-35	LC212	8.12

Lubrication fitting tap size 1/4-28 UNF

INTERCHANGES: MSC



Set-Screw Locking  
Wide Inner Ring  
Cast Iron Housing  
Insert detail-pg.134  
Metric-Call for Inch Sizes

HEAVY DUTY

Shaft Diam. (mm)	AMI Unit #	List Price	Dimensions (mm)			Bearing #	Housing #	Weight (lb.)
			a	x	Bi			
25	UCC305	112.90	90	26	38	UC305	C305	2.45
30	UCC306	144.50	100	28	43	UC306	C306	2.9
35	UCC307	172.90	110	32	48	UC307	C307	4.01
40	UCC308	212.90	120	34	52	UC308	C308	4.91
45	UCC309	255.60	130	38	57	UC309	C309	6.02
50	UCC310	306.00	140	40	61	UC310	C310	7.36
55	UCC311	392.20	150	44	66	UC311	C311	8.70
60	UCC312	459.00	160	46	71	UC312	C312	10.7
65	UCC313	535.00	170	50	75	UC313	C313	12.7
70	UCC314	625.80	180	52	78	UC314	C314	14.7
75	UCC315	732.80	190	55	82	UC315	C315	17.2
80	UCC316	872.60	200	60	86	UC316	C316	19.9
85	UCC317	1089.70	215	64	96	UC317	C317	25.0
90	UCC318	1203.60	225	66	96	UC318	C318	27.5
95	UCC319	1511.30	240	72	103	UC319	C319	33.9
100	UCC320	1774.50	260	75	108	UC320	C320	42.8
105	UCC321	2228.80	260	75	112	UC321	C321	42.2
110	UCC322	2425.90	300	80	117	UC322	C322	62.7
120	UCC324	3331.80	320	90	126	UC324	C324	78.1
130	UCC326	4356.80	340	100	135	UC326	C326	94.1
140	UCC328	5366.10	360	100	145	UC328	C328	109.1

**NOTE:** Recommended housing bore:  
Rotating Shaft: nominal +0.001" - +0.003" (+0.025 mm - +0.076 mm).  
Stationary Shaft: nominal +0.000" - -0.002" (+0.000 mm - -0.050 mm)  
Lubrication fitting tap size 1/8-27 NPT

**INTERCHANGES: UCC3**