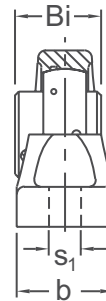
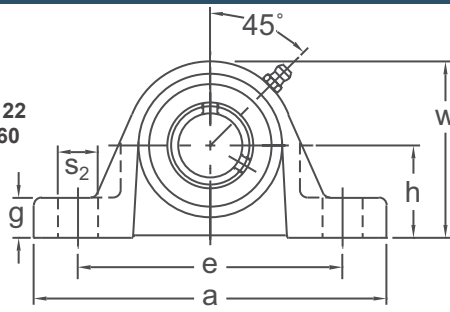


PILLOW BLOCKS

UCP 200

NORMAL DUTY

Set-Screw Locking  
Wide Inner Ring  
Cast Iron Housing  
Insert Detail-pg.121-122  
Covers Available-pg.60  
Inch and Metric



Shaft Diam. (in.)	AMI Unit #	List Price	Dimensions (in.)										Bolt Size (in.)	Bearing #	Housing #	Weight (lb.)
			h	a	e		b	s1	s2	g	w	Bi				
					Min.	Max.										
1/2	UCP201-8	44.50	1-3/16	5	3-3/8	4-1/8	1-1/2	1/2	3/4	19/32	2-7/16	1.220	3/8	UC201-8	P203T	1.43
5/8	UCP202-10				UC202-10	1.39										
11/16	UCP203-11				UC203-11	1.37										
3/4	UCP204-12	44.50	1-5/16	5	3-3/8	4-1/8	1-1/2	1/2	3/4	19/32	2-9/16	1.220	3/8	UC204-12	P204T	1.43
7/8	UCP205-14	49.00	1-7/16	5-1/2	3-3/4	4-1/2	1-1/2	1/2	3/4	5/8	2-3/4	1.339	3/8	UC205-14	P205T	1.74
15/16	UCP205-15	UC205-15														
1	UCP205-16	UC205-16														
1-1/16	UCP206-17	64.95	1-11/16	6-1/2	4-7/16	5-1/16	1-7/8	21/32	13/16	23/32	3-9/32	1.500	1/2	UC206-17	P206T	2.87
1-1/8	UCP206-18				UC206-18											
1-3/16	UCP206-19				UC206-19											
1-1/4	UCP206-20				UC206-20											
1-1/4	UCP207-20				75.45	1-7/8								6-9/16		
1-5/16	UCP207-21	UC207-21														
1-3/8	UCP207-22	UC207-22														
1-7/16	UCP207-23	UC207-23														
1-1/2	UCP208-24	89.40	1-15/16	7-1/4	4-7/8	5-7/8	2-1/8	21/32	1	3/4	3-15/16	1.937	1/2	UC208-24	P208T	4.41
1-9/16	UCP208-25				UC208-25											
1-1/2	UCP209-24	99.60	2-1/8	7-1/2	5-3/8	6-1/8	2-1/8	21/32	7/8	25/32	4-1/4	1.937	1/2	UCX08-24	P209T	5.07
1-5/8	UCP209-26				UC209-26	5.35										
1-11/16	UCP209-27				UC209-27	5.35										
1-3/4	UCP209-28				UC209-28	5.35										
1-7/8	UCP210-30	118.35	2-1/4	8-1/8	5-7/8	6-5/8	2-3/8	25/32	1	7/8	4-1/2	2.031	5/8	UC210-30	P210T	5.95
1-15/16	UCP210-31				UC210-31											
2	UCP210-32				UC210-32											
2	UCP211-32	146.85	2-1/2	8-5/8	6-3/8	7-1/8	2-3/8	25/32	1	7/8	4-31/32	2.189	5/8	UC211-32	P211T	7.27
2-1/8	UCP211-34				UC211-34											
2-3/16	UCP211-35				UC211-35											
2-1/4	UCP212-36	189.85	2-3/4	9-1/2	6-7/8	7-5/8	2-3/4	25/32	1	1	5-7/16	2.563	5/8	UC212-36	P212T	10.36
2-3/8	UCP212-38				UC212-38											
2-7/16	UCP212-39				UC212-39											
2-1/2	UCP213-40	244.60	3	10-7/16	7-19/32	8-13/32	2-3/4	1	1-5/32	1-1/16	5-29/32	2.563	3/4	UC213-40	P213T	12.34
2-11/16	UCP214-43	294.40	3-1/8	10-1/2	7-25/32	8-23/32	2-13/16	1	1-7/32	1-1/16	6-5/32	2.937	3/4	UC214-43	P214T	16.09
2-3/4	UCP214-44				UC214-44											
2-15/16	UCP215-47	399.10	3-1/4	10-13/16	8-1/32	8-31/32	2-15/16	1	1-7/32	1-3/32	6-13/32	3.063	3/4	UC215-47	P215T	17.41
3	UCP215-48				UC215-48											
3-1/4	UCP217-52	595.50	3-3/4	12-3/16	9-9/32	10-7/32	3-1/4	1	1-7/32	1-1/4	7-3/8	3.374	3/4	UC217-52	P217T	26.89
3-7/16	UCP217-55				UC217-55											
3-1/2	UCP218-56	717.10	4	12-7/8	9-13/16	10-11/16	3-1/2	1-1/16	1-5/16	1-11/32	7-7/8	3.780	7/8	UC218-56	P218T	32.40
Dimensions (mm)																
12	UCP201	44.50	30.2	127	86	105	38	13	19	15	62	31	M10	UC201	P203T	1.45
15	UCP202													UC202		1.40
17	UCP203													UC203		1.38
20	UCP204	44.50	33.3	127	86	105	38	13	19	15	65	31	M10	UC204	P204T	1.45
25	UCP205	49.00	36.5	140	95	114	38	13	19	16	70	34	M10	UC205	P205T	1.76
30	UCP206	64.95	42.9	165	113	129	48	17	21	18	83	38.1	M14	UC206	P206T	2.90
35	UCP207	75.45	47.6	167	119	135	48	17	21	19	94	42.9	M14	UC207	P207T	3.57
40	UCP208	89.40	49.2	184	124	149	54	17	25	19	100	49.2	M14	UC208	P208T	4.46
45	UCP209	99.60	54	190	137	156	54	17	22	20	108	49.2	M14	UC209	P209T	5.13
50	UCP210	118.35	57.2	206	149	168	60	20	25	22	114	51.6	M16	UC210	P210T	6.02
55	UCP211	146.85	63.5	219	162	181	60	20	25	22	126	55.6	M16	UC211	P211T	7.36
60	UCP212	189.85	69.8	241	175	194	70	20	25	25	138	65.1	M16	UC212	P212T	10.5
65	UCP213	244.60	76.2	265	193	214	70	25	29	27	150	65.1	M20	UC213	P213T	12.5
70	UCP214	294.40	79.4	266	198	222	72	25	31	27	156	74.6	M20	UC214	P214T	16.3
75	UCP215	399.10	82.6	275	204	228	74	25	31	28	163	77.8	M20	UC215	P215T	17.6
80	UCP216	552.10	88.9	292	220	244	78	25	31	30	175	82.6	M20	UC216	P216T	22.3
85	UCP217	595.50	95.2	310	236	260	83	25	31	32	187	85.7	M20	UC217	P217T	27.2
90	UCP218	717.10	101.6	327	249	272	88	27	33	34	200	96	M22	UC218	P218T	32.8

Lubrication fitting tap size for 1" and smaller shaft sizes, 1/4-28 UNF; for all other sizes, 1/8-27 NPT

INTERCHANGES: VPS-2 P2B-SC YAS P3-UN SY-TF UCP NP

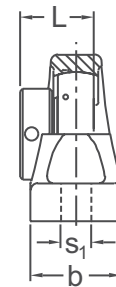
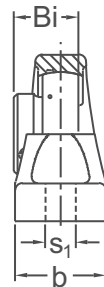
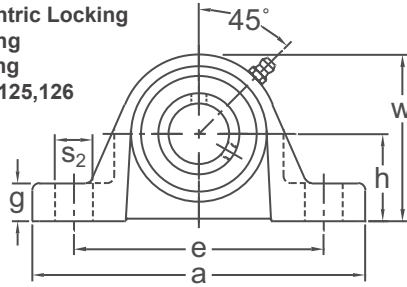


PILLOW BLOCKS

BP / KHP 200

NORMAL DUTY

Set-Screw/Eccentric Locking  
Narrow Inner Ring  
Cast Iron Housing  
Insert Detail-pg.125,126  
Inch and Metric



BP 200 Type  
Set-Screw Locking

KHP 200 Type  
Eccentric Collar Locking

Shaft Diam. (in.)	AMI Unit # Complete with B 200 Type	List Price	AMI Unit # Complete with KH 200 Type	List Price	Dimensions (in.)												Bolt Size (in.)	Bearing #		Housing #	Weight (lb.)
					h	a	e		b	s <sub>1</sub>	s <sub>2</sub>	g	w	BI	L	B		KH			
							Min.	Max.													
3/4	BP204-12	42.60	KHP204-12	43.20	1-5/16	5	3-3/8	4-1/8	1-1/2	1/2	3/4	19/32	2-9/16	0.972	1-7/32	3/8	B4-12	KH204-12	P204T	1.43	
7/8	BP205-14	45.20	KHP205-14	47.10	1-7/16	5-1/2	3-3/4	4-1/2	1-1/2	1/2	3/4	5/8	2-3/4	1.063	1-7/32	3/8	B5-14	KH205-14	P205T	1.76	
15/16	BP205-15	45.20	KHP205-15														B5-15	KH205-15			
1	BP205-16	42.85	KHP205-16														B5-16	KH205-16			
1-1/8	BP206-18	63.20	KHP206-18	66.45	1-11/16	6-1/2	4-7/16	5-1/16	1-7/8	21/32	13/16	23/32	3-9/32	1.193	1-13/32	1/2	B6-18	KH206-18	P206T	2.87	
1-3/16	BP206-19		KHP206-19														B6-19	KH206-19			
1-1/4	BP206-20		KHP206-20														B6-20	KH206-20			
1-1/4	BP207-20	72.60	KHP207-20	80.00	1-7/8	6-9/16	4-11/16	5-5/16	1-7/8	21/32	13/16	3/4	3-11/16	1.295	1-17/32	1/2	B7-20	KH207-20	P207T	3.55	
1-5/16	BP207-21		KHP207-21														B7-21	KH207-21			
1-3/8	BP207-22		KHP207-22														B7-22	KH207-22			
1-7/16	BP207-23		KHP207-23														B7-23	KH207-23			
1-1/2	BP208-24	101.35	KHP208-24	91.20	1-15/16	7-1/4	4-7/8	5-7/8	2-1/8	21/32	1	3/4	3-15/16	1.398	1-23/32	1/2	B8-24	KH208-24	P208T	4.41	
1-5/8	—	—	KHP209-26	103.65	2-1/8	7-1/2	5-3/8	6-1/8	2-1/8	21/32	7/8	25/32	4-1/4	—	1-23/32	1/2	—	KH209-26	P209T	5.02	
1-11/16			KHP209-27														KH209-27				
1-3/4			KHP209-28														KH209-28				
1-7/8	—	—	KHP210-30	119.40	2-1/4	8-1/8	5-7/8	6-5/8	2-3/8	25/32	1	7/8	4-1/2	—	1-23/32	5/8	—	KH210-30	P210T	5.88	
1-15/16			KHP210-31														KH210-31				
2	—	—	KHP211-32	160.10	2-1/2	8-5/8	6-3/8	7-1/8	2-3/8	25/32	1	7/8	4-31/32	—	1-29/32	5/8	—	KH211-32	P211T	7.07	
2-3/16			KHP211-35														KH211-35				
Dimensions (mm)																					
20	BP204	42.60	KHP204	43.20	33.3	127	86	105	38	13	19	15	65	24.7	31	M10	B4	KH204	P204T	1.43	
25	BP205	45.20	KHP205	47.10	36.5	140	95	114	38	13	19	16	70	27	31	M10	B5	KH205	P205T	1.76	
30	BP206	63.20	KHP206	66.45	42.9	165	113	129	48	17	21	18	83	30.3	35.7	M14	B6	KH206	P206T	2.87	
35	BP207	72.60	KHP207	80.00	47.6	167	119	135	48	17	21	19	94	32.9	38.9	M14	B7	KH207	P207T	3.55	
40	BP208	101.35	KHP208	91.20	49.2	184	124	149	54	17	25	19	100	35.5	43.7	M14	B8	KH208	P208T	4.41	
45	—	—	KHP209	103.65	54	190	137	156	54	17	22	20	108	—	43.7	—	—	KH209	P209T	5.02	
50	—	—	KHP210	119.40	57.2	206	149	168	60	20	25	22	114	—	43.7	M16	—	KH210	P210T	5.88	
55	—	—	KHP211	160.10	63.5	219	162	181	60	20	25	22	126	—	48.7	M16	—	KH211	P211T	7.07	

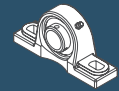
\*Consult factory for availability

Lubrication fitting tap size for 1" and smaller shaft sizes, 1/4-28 UNF; for all other sizes, 1/8-27 NPT

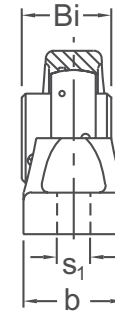
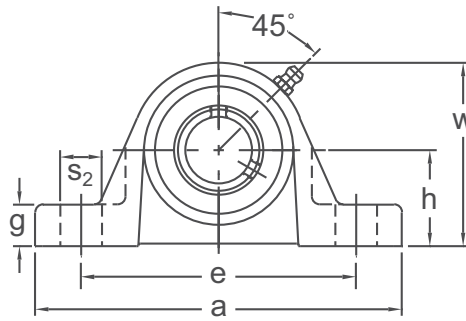
INTERCHANGES:	ASP	AELP	VPE-1	P2B-SXV	VAS	P3W-U	SY-FM	VP-E
---------------	-----	------	-------	---------	-----	-------	-------	------

# UCLP 200

## LOW BASE PILLOW BLOCKS



NORMAL DUTY



**Set-Screw Locking  
Wide Inner Ring  
Cast Iron Housing  
Low Shaft Height  
Insert detail-pg.121-122  
Covers Available-pg.60  
Inch and Metric**

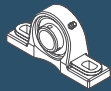
Shaft Diam. (in.)	AMI Unit #	List Price	Dimensions (in.)											Bolt Size (in.)	Bearing #	Housing #	Weight (lb.)
			h	a	e		b	s <sub>1</sub>	s <sub>2</sub>	g	w	Bi					
					Min.	Max.											
1/2	UCLP201-8	44.50	1-1/16	4-3/4	3-1/4	3-3/4	1-1/8	1/2	5/8	1/2	2-3/16	1.024	3/8	UCW201-8	LP203T	1.10	
9/16	UCLP202-9				3-1/2	3-1/2								UCW202-9		1.08	
5/8	UCLP202-10				3-1/2	3-1/2								UCW202-10		1.08	
11/16	UCLP203-11				3-1/2	3-1/2								UCW203-11		1.06	
3/4	UCLP204-12	44.50	1-1/4	5-1/4	3-1/2	4-1/4	1-1/4	1/2	3/4	1/2	2-9/16	1.220	3/8	UC204-12	LP204T	1.48	
7/8	UCLP205-14	49.00	1-5/16	5-1/2	3-3/4	4-1/2	1-1/2	1/2	3/4	5/8	2-11/16	1.339	3/8	UC205-14	LP205T	1.76	
15/16	UCLP205-15	UC205-15															
1	UCLP205-16	46.65												UC205-16			
1-1/16	UCLP206-17	64.95	1-9/16	6-1/2	4-1/2	5-1/4	1-5/8	19/32	7/8	11/16	3-3/16	1.500	1/2	UC206-17	LP206T	2.64	
1-1/8	UCLP206-18													UC206-18			
1-3/16	UCLP206-19													UC206-19			
1-1/4	UCLP206-20													UC206-20			
1-1/4	UCLP207-20	75.45	1-13/16	7	5	5-3/4	1-7/8	19/32	7/8	3/4	3-11/16	1.689	1/2	UC207-20	LP207T	4.19	
1-5/16	UCLP207-21													UC207-21			
1-3/8	UCLP207-22													UC207-22			
1-7/16	UCLP207-23													UC207-23			
1-1/2	UCLP208-24	89.40	1-15/16	7-1/4	5-1/4	6	2	19/32	7/8	13/16	3-15/16	1.937	1/2	UC208-24	LP208T	4.85	
1-9/16	UCLP208-25													UC208-25			
1-5/8	UCLP209-26	99.60	2-1/16	7-3/4	5-1/2	6-1/2	2-1/8	19/32	1	13/16	4-3/16	1.937	1/2	UC209-26	LP209T	5.29	
1-11/16	UCLP209-27													UC209-27			
1-3/4	UCLP209-28													UC209-28			
1-7/8	UCLP210-30	118.35	2-3/16	8-3/8	6	7	2-1/4	19/32	1	7/8	4-7/16	2.031	1/2	UC210-30	LP210T	6.39	
1-15/16	UCLP210-31													UC210-31			
2	UCLP210-32													UC210-32			
2	UCLP211-32	146.85	2-7/16	9-1/4	6-5/8	7-5/8	2-1/2	3/4	1-1/8	1	4-15/16	2.189	5/8	UC211-32	LP211T	8.82	
2-1/8	UCLP211-34													UC211-34			
2-3/16	UCLP211-35													UC211-35			
2-1/4	UCLP212-36	189.85	2-11/16	9-3/4	7-1/8	8-1/8	2-3/4	3/4	1-1/8	1-1/8	5-7/16	2.563	5/8	UC212-36	LP212T	11.68	
2-3/8	UCLP212-38													UC212-38			
2-7/16	UCLP212-39													UC212-39			
2-1/2	UCLP213-40	244.60	2-11/16	9-3/4	7-1/8	8-1/8	2-3/4	3/4	1-1/8	1-1/8	5-7/16	2.563	5/8	UC213-40	LP213T	11.24	

Dimensions (mm)																	
12	UCLP201	44.50	27	121	83	95	29	12	16	13	56	26	M10	UCW201	LP203T	1.10	
15	UCLP202				83	95								UCW202		1.08	
17	UCLP203				83	95								UCW203		1.06	
20	UCLP204	44.50	31.8	133	89	108	32	12	19	13	65	31	M10	UC204	LP204T	1.48	
25	UCLP205	49.00	33.3	140	95	114	38	12	19	16	68	34	M10	UC205	LP205T	1.76	
30	UCLP206	64.95	39.7	165	114	133	41	15	22	17	81	38.1	M12	UC206	LP206T	2.64	
35	UCLP207	75.45	46	178	127	146	48	15	22	19	94	42.9	M12	UC207	LP207T	4.19	
40	UCLP208	89.40	49.2	184	133	152	51	15	22	21	100	49.2	M12	UC208	LP208T	4.85	
45	UCLP209	99.60	52.4	197	140	165	54	15	25	21	106	49.2	M12	UC209	LP209T	5.29	
50	UCLP210	118.35	55.6	213	152	178	57	15	25	22	113	51.6	M12	UC210	LP210T	6.39	
55	UCLP211	146.85	61.9	235	168	194	64	19	29	25	125	55.6	M16	UC211	LP211T	8.82	
60	UCLP212	189.85	68.3	248	181	206	70	19	29	29	138	65.1	M16	UC212	LP212T	11.68	
65	UCLP213	244.60	68.3	248	181	206	70	19	29	29	138	65.1	M16	UC213	LP213T	11.24	

Lubrication fitting tap size for 1" and smaller shaft sizes, 1/4-28 UNF; for all other sizes, 1/8-27 NPT

**INTERCHANGES: VPLS-2 P2B-SCB YAK PL3U-N CL25 SYH-TF UCLP NPL**

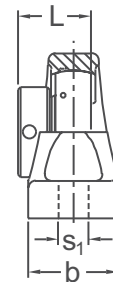
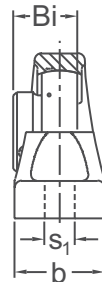
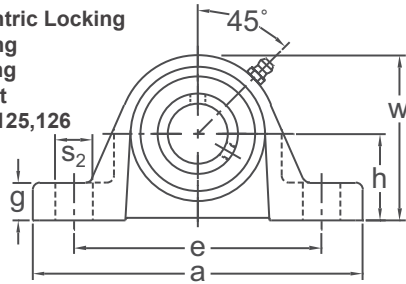


# LOW BASE PILLOW BLOCKS

# BLP / KHLP 200

NORMAL DUTY

Set-Screw/Eccentric Locking  
Narrow Inner Ring  
Cast Iron Housing  
Low Shaft Height  
Insert Detail-pg.125,126  
Inch and Metric



BLP 200 Type  
Set-Screw Locking

KHLP 200 Type  
Eccentric Collar Locking

Shaft Diam. (in.)	AMI Unit # Complete with B 200 Type	List Price	AMI Unit # Complete with KH 200 Type	List Price	Dimensions (in.)											Bolt Size (in.)	Bearing #		Housing #	Weight (lb.)
					h	a	e		b	s1	s2	g	w	Bi	L		B	KH		
							Min.	Max.												
1/2	BLP201-8	42.60	KHLP201-8	43.20	1-1/16	4-3/4	3-1/4	3-3/4	1-1/8	1/2	5/8	1/2	2-3/16	0.866	1-1/8	3/8	B1-8	KH201-8	LP203T	0.90
5/8	BLP202-10		KHLP202-10		1-1/4	5-1/4	3-1/2	4-1/4	1-1/4	1/2	3/4	1/2	2-9/16	0.972	1-7/32	3/8	B2-10	KH202-10	LP203T	0.89
3/4	BLP204-12	42.60	KHLP204-12	43.20	1-1/4	5-1/4	3-1/2	4-1/4	1-1/4	1/2	3/4	1/2	2-9/16	0.972	1-7/32	3/8	B4-12	KH204-12	LP204T	1.48
7/8	BLP205-14	45.20	KHLP205-14	47.10	1-5/16	5-1/2	3-3/4	4-1/2	1-1/2	1/2	3/4	5/8	2-11/16	1.063	1-7/32	3/8	B5-14	KH205-14	LP205T	1.74
15/16	BLP205-15	45.20	KHLP205-15														B5-15	KH205-15		
1	BLP205-16	42.85	KHLP205-16	—	—	—	—	—	—	—	—	—	—	—	—	—	B5-16	KH205-16	—	—
1-1/16	BLP206-17	63.20	—	66.45	1-9/16	6-1/2	4-1/2	5-1/4	1-5/8	19/32	7/8	11/16	3-3/16	1.193	1-13/32	1/2	B6-17	—	LP206T	2.64
1-1/8	BLP206-18		KHLP206-18														B6-18	KH206-18		
1-3/16	BLP206-19		KHLP206-19														B6-19	KH206-19		
1-1/4	BLP206-20		KHLP206-20														B6-20	KH206-20		
1-1/4	BLP207-20	72.60	KHLP207-20	80.00	1-13/16	7	5	5-3/4	1-7/8	19/32	7/8	3/4	3-11/16	1.295	1-17/32	1/2	B7-20	KH207-20	LP207T	4.21
1-5/16	BLP207-21		KHLP207-21														B7-21	KH207-21		
1-3/8	BLP207-22		KHLP207-22														B7-22	KH207-22		
1-7/16	BLP207-23		KHLP207-23														B7-23	KH207-23		
1-1/2	BLP208-24		101.35														KHLP208-24	91.20		
1-5/8	—	—	KHLP209-26	103.65	2-1/16	7-3/4	5-1/2	6-1/2	2-1/8	19/32	1	13/16	4-3/16	—	1-23/32	1/2	—	KH209-26	LP209T	5.24
1-11/16	—	—	KHLP209-27														B8-24	KH208-24		
1-3/4	—	—	KHLP209-28														—	KH209-28		
1-7/8	—	—	KHLP210-30	119.40	2-3/16	8-3/8	6	7	2-1/4	19/32	1	7/8	4-7/16	—	1-23/32	1/2	—	KH210-30	LP210T	6.32
1-15/16	—	—	KHLP210-31														—	KH210-31		
2	—	—	KHLP211-32	160.10	2-7/16	9-1/4	6-5/8	7-5/8	2-1/2	3/4	1-1/8	1	4-15/16	—	1-29/32	5/8	—	KH211-32	LP211T	8.62
2-3/16	—	—	KHLP211-35														—	KH211-35		
Dimensions (mm)																				
12	BLP201	42.60	KHLP201	43.20	27	121	83	95	29	12	16	13	56	22	28.6	M10	B1	KH201	LP203T	0.90
15	BLP202		KHLP202														B2	KH202		
17	BLP203		KHLP203														B3	KH203		
20	BLP204	42.60	KHLP204	43.20	31.8	133	89	108	32	12	19	13	65	24.7	31	M10	B4	KH204	LP204T	1.48
25	BLP205	45.20	KHLP205	47.10	33.3	140	95	114	38	12	19	16	68	27	31	M10	B5	KH205	LP205T	1.74
30	BLP206	63.20	KHLP206	66.45	39.7	165	114	133	41	15	22	17	81	30.3	35.7	M12	B6	KH206	LP206T	2.64
35	BLP207	72.60	KHLP207	80.00	46	178	127	146	48	15	22	19	94	32.9	38.9	M12	B7	KH207	LP207T	4.21
40	BLP208	101.35	KHLP208	91.20	49.2	184	133	152	51	15	22	21	100	35.5	43.7	M12	B8	KH208	LP208T	4.85
45	—	—	KHLP209	103.65	52.4	197	140	165	54	15	25	21	106	—	43.7	—	—	KH209	LP209T	5.24
50	—	—	KHLP210	119.40	55.6	213	152	178	57	15	25	22	113	—	43.7	M12	—	KH210	LP210T	6.32
55	—	—	KHLP211	160.10	61.9	235	168	194	64	19	29	25	125	48.7	48.7	M16	—	KH211	LP211T	8.62

Lubrication fitting tap size for 1" and smaller shaft sizes, 1/4-28 UNF; for all other sizes, 1/8-27 NPT

**INTERCHANGES: VPLE-1 P2B-SXVB VAK PL3W-U SYH-FM AELPL VPL**

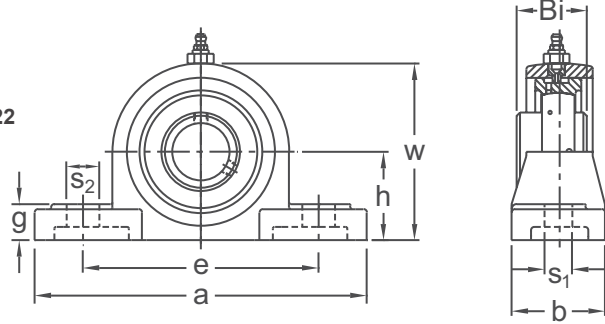


# EXPANSION PILLOW BLOCKS

# UCEP 200

NORMAL DUTY

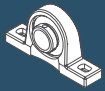
Set-Screw Locking  
Wide Inner Ring  
Cast Iron Housing  
Expansion Type  
Insert Detail-pg.121-122  
Inch and Metric



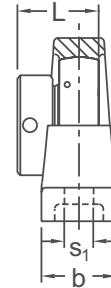
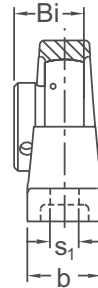
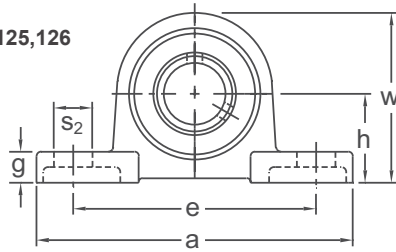
Shaft Diam. (in.)	AMI Unit #	List Price	Dimensions (in.)										Bolt Size (in.)	Bearing #	Housing #	Weight (lb.)
			h	a	e		b	s1	s2	g	w	Bi				
					Min.	Max.										
7/8	UCEP205-14	124.15	1-3/4	6-1/4	4-13/32	4-31/32	2	21/32	25/32	23/32	3-11/32	1.339	1/2	UC205-14	EP205	3.30
15/16	UCEP205-15													UC205-15		
1	UCEP205-16													UC205-16		
1-1/16	UCEP206-17	153.15	1-7/8	6-7/8	4-23/32	5-9/32	2-1/4	21/32	25/32	25/32	3-11/16	1.500	1/2	UC206-17	EP206	4.40
1-1/8	UCEP206-18													UC206-18		
1-3/16	UCEP206-19													UC206-19		
1-1/4	UCEP206-20													UC206-20		
1-1/4	UCEP207-20	184.55	2-1/8	8	5-13/32	5-31/32	2-1/4	21/32	25/32	7/8	4-1/4	1.689	1/2	UC207-20	EP207	5.94
1-5/16	UCEP207-21													UC207-21		
1-3/8	UCEP207-22													UC207-22		
1-7/16	UCEP207-23													UC207-23		
1-1/2	UCEP208-24	221.75	2-5/16	8-3/4	5-13/16	6-7/16	2-5/8	25/32	15/16	1-1/32	4-9/16	1.937	5/8	UC208-24	EP208	7.70
1-5/8	UCEP209-26	237.50	2-5/16	8-3/4	5-13/16	6-7/16	2-5/8	25/32	15/16	1-1/32	4-9/16	1.937	5/8	UC209-26	EP209	7.48
1-11/16	UCEP209-27													UC209-27		
1-3/4	UCEP209-28													UC209-28		
1-7/8	UCEP210-30	278.50	2-1/2	9-1/2	6-11/32	7-5/32	2-7/8	25/32	1-1/32	1-1/16	4-31/32	2.031	5/8	UC210-30	EP210	9.02
1-15/16	UCEP210-31													UC210-31		
2	UCEP210-32													UC210-32		
2	UCEP211-32	356.25	2-3/4	10-1/4	6-29/32	7-19/32	3-1/8	1	1-3/32	1-3/16	5-15/32	2.189	3/4	UC211-32	EP211	12.32
2-1/8	UCEP211-34													UC211-34		
2-3/16	UCEP211-35													UC211-35		
2-1/4	UCEP212-36	441.60	3	11-1/4	7-9/16	8-7/16	3-1/4	1	1-3/16	1-1/4	5-15/16	2.563	3/4	UC212-36	EP212	15.62
2-3/8	UCEP212-38													UC212-38		
2-7/16	UCEP212-39													UC212-39		
2-1/2	UCEP213-40	560.70	3	11-1/4	7-9/16	8-7/16	3-1/4	1	1-3/16	1-1/4	6-1/16	2.563	3/4	UC213-40	EP213	15.40
2-11/16	UCEP214-43	755.00	3-1/2	13	8-21/32	9-11/32	3-1/2	1-1/16	1-7/32	1-3/8	6-31/32	2.937	7/8	UC214-43	EP214	23.76
2-3/4	UCEP214-44													UC214-44		
2-15/16	UCEP215-47	841.20	3-1/2	13	8-21/32	9-11/32	3-1/2	1-1/16	1-7/32	1-3/8	6-31/32	3.063	7/8	UC215-47	EP215	23.98
3	UCEP215-48													UC215-48		
3-1/4	UCEP217-52	1236.00	4	15	10-7/16	11-13/16	4	1-1/16	1-9/16	1-21/32	8-1/16	3.374	7/8	UC217-52	EP217	36.08
3-7/16	UCEP217-55													UC217-55		
Dimensions (mm)																
25	UCEP205	124.15	44.4	159	112	126	51	17	20	18	85	34	M14	UC205	EP205	3.30
30	UCEP206	153.15	47.6	175	120	134	57	17	20	20	94	38.1		UC206	EP206	4.40
35	UCEP207	184.55	54	203	137	152	57	17	20	22	108	42.9	M14	UC207	EP207	5.94
40	UCEP208	221.75	58.7	222	148	164	67	20	24	26	116	49.2	M16	UC208	EP208	7.70
45	UCEP209	237.50	58.7	222	148	164	67	20	24	26	116	49.2	M16	UC209	EP209	7.48
50	UCEP210	278.50	63.5	241	161	182	73	20	26	27	126	51.6	M16	UC210	EP210	9.02
55	UCEP211	356.25	69.8	260	175	193	79	25	28	30	139	55.6	M20	UC211	EP211	12.32
60	UCEP212	441.60	76.2	286	192	214	83	25	30	32	151	65.1	M20	UC212	EP212	15.62
65	UCEP213	560.70	76.2	286	192	214	83	25	30	32	154	65.1	M20	UC213	EP213	15.40
70	UCEP214	755.00	88.9	330	220	237	89	27	31	35	177	74.6	M22	UC214	EP214	23.76
75	UCEP215	841.20	88.9	330	220	237	89	27	31	35	177	77.8	M22	UC215	EP215	23.98
80	UCEP216	1020.00	101.6	381	265	300	102	27	40	42	205	82.6	M22	UC216	EP216	37.62
85	UCEP217	1236.00	101.6	381	265	300	102	27	40	42	205	85.7	M22	UC217	EP217	36.08

Lubrication fitting Tap Size for 2-1/2" and smaller shaft sizes, 1/4-28 UNF, for all other sizes, 1/8-27 NPT.

**INTERCHANGES: P2B-SCH-E RAKHL EMP**



Set-Screw/Eccentric Locking  
 Narrow Inner Ring  
 Cast Iron Housing  
 Non-Relube  
 Insert Detail-pg.125,126  
 Inch and Metric



BLLP 200 Type  
Set-Screw Locking

KHLLP 200 Type  
Eccentric Collar Locking

Shaft Diam. (in.)	AMI Unit # Complete with B 200 Type	List Price	AMI Unit # Complete with KH 200 Type	List Price	Dimensions (in.)											Bolt Size (in.)	Bearing #		Housing #	Weight (lb.)
					h	a	e		b	s <sub>1</sub>	s <sub>2</sub>	g	w	Bi	L		B	KH		
							Min.	Max.												
1/2	BLLP1-8	37.45	KHLLP201-8	38.85	1-3/16	4-1/2	3-3/16	3-11/16	1	7/16	5/8	15/32	2-1/4	0.866	1-1/8	3/8	B1-8	KH201-8	LLP3	0.90
5/8	BLLP2-10		KHLLP202-10		3-9/16	4-1/16	1-1/16	7/16	5/8	1/2	2-1/2	0.972	1-7/32	3/8	B2-10	KH202-10	0.88			
3/4	BLLP4-12	37.95	KHLLP204-12	40.55	1-5/16	4-15/16	3-9/16	4-1/16	1-1/16	7/16	5/8	1/2	2-1/2	0.972	1-7/32	3/8	B4-12	KH204-12	LLP4	1.15
7/8	BLLP5-14	41.20	KHLLP205-14	43.10	1-7/16	5-1/8	3-11/16	4-3/16	1-1/8	7/16	5/8	1/2	2-3/4	1.063	1-7/32	3/8	B5-14	KH205-14	LLP5	1.39
15/16	BLLP5-15		KHLLP205-15														B5-15	KH205-15		
1	BLLP5-16		KHLLP205-16														B5-16	KH205-16		
1-1/16	BLLP6-17	56.25	—	59.50	1-11/16	6-1/8	4-13/32	5-1/32	1-3/16	9/16	13/16	19/32	3-1/4	1.193	1-13/32	1/2	B6-17	—	LLP6	1.67
1-1/8	BLLP6-18		KHLLP206-18														B6-18	KH206-18		
1-3/16	BLLP6-19		KHLLP206-19														B6-19	KH206-19		
1-1/4	BLLP6-20		KHLLP206-20														B6-20	KH206-20		
1-1/4	BLLP7-20	70.85	KHLLP207-20	78.25	1-7/8	6-1/2	4-11/16	5-5/16	1-3/8	9/16	13/16	5/8	3-5/8	1.295	1-17/32	1/2	B7-20	KH207-20	LLP7	2.40
1-5/16	BLLP7-21		KHLLP207-21														B7-21	KH207-21		
1-3/8	BLLP7-22		KHLLP207-22														B7-22	KH207-22		
1-7/16	BLLP7-23		KHLLP207-23														B7-23	KH207-23		
Dimensions (mm)																				
12	BLLP1	37.45	KHLLP201	38.85	30.2	114	81	94	25	12	16	12	57	22	28.6	M10	B1	KH201	LLP3	0.90
15	BLLP2		KHLLP202														B2	KH202		0.88
17	BLLP3		KHLLP203														B3	KH203		0.86
20	BLLP4	37.95	KHLLP204	40.55	33.3	125	91	103	27	12	16	13	64	24.7	31	M10	B4	KH204	LLP4	1.15
25	BLLP5	41.20	KHLLP205	43.10	36.5	130	94	106	29	12	16	13	70	27	31	M10	B5	KH205	LLP5	1.39
30	BLLP6	56.25	KHLLP206	59.50	42.9	156	112	128	33	14	21	15	83	30.3	35.7	M12	B6	KH206	LLP6	1.67
35	BLLP7	70.85	KHLLP207	78.25	47.6	165	119	135	35	14	21	16	93	32.9	38.9	M12	B7	KH207	LLP7	2.40

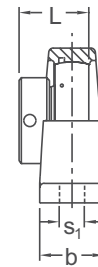
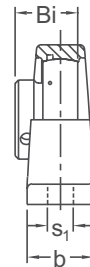
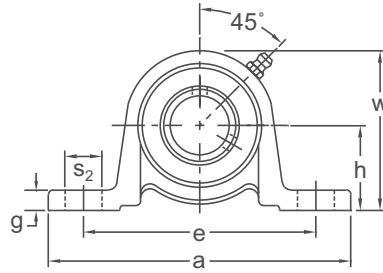
INTERCHANGES: ASPB PB100 AELPB





NORMAL DUTY

Set-Screw/Eccentric Locking  
Narrow Inner Ring  
Ductile Iron Housing  
Insert Detail-pg.125,126  
Inch and Metric



BPW 200 Type Set-Screw Locking      KHPW 200 Type Eccentric Collar Locking

Shaft Diam. (in.)	AMI Unit # Complete with B 200 Type	List Price	AMI Unit # Complete with KH 200 Type	List Price	Dimensions (in.)											Bolt Size (in.)	Bearing #		Housing #	Weight (lb.)	
					h	a	e		b	s <sub>1</sub>	s <sub>2</sub>	g	w	Bi	L		B	KH			
							Min.	Max.													
1/2	BPW201-8	53.75	KHPW201-8	55.15	1-3/16	4-1/2	3-3/16	3-11/16	1	7/16	5/8	9/32	2-11/64	0.866	1-1/8	3/8	B1-8	KH201-8	PW203	0.68	
5/8	BPW202-10		KHPW202-10		B2-10	KH202-10	0.66														
3/4	BPW204-12	58.60	KHPW204-12	55.65	1-5/16	4-15/16	3-9/16	4-1/16	1-1/16	7/16	5/8	5/16	2-7/16	0.972	1-7/32	3/8	B4-12	KH204-12	PW204	0.82	
7/8	BPW205-14	59.50	KHPW205-14	61.40	1-7/16	5-1/8	3-11/16	4-3/16	1-1/8	7/16	5/8	11/32	2-45/64	1.063	1-7/32	3/8	B5-14	KH205-14	PW205	1.06	
15/16	BPW205-15		KHPW205-15														B5-15	KH205-15			
1	BPW205-16		KHPW205-16														B5-16	KH205-16			
1-1/16	BPW206-17	73.45	—	76.70	1-11/16	6-5/32	4-13/32	5-1/32	1-5/16	9/16	13/16	3/8	3-3/16	1.193	1-13/32	1/2	B6-17	—	PW206	1.79	
1-1/8	BPW206-18		KHPW206-18														B6-18	KH206-18			
1-3/16	BPW206-19		KHPW206-19														B6-19	KH206-19			
1-1/4	BPW206-20		KHPW206-20														B6-20	KH206-20			
1-1/4	BPW207-20	80.35	KHPW207-20	87.75	1-7/8	6-1/2	4-11/16	5-5/16	1-3/8	9/16	13/16	13/32	3-37/64	1.295	1-17/32	1/2	B7-20	KH207-20	PW207	2.42	
1-5/16	BPW207-21		KHPW207-21														B7-21	KH207-21			
1-3/8	BPW207-22		KHPW207-22														B7-22	KH207-22			
1-7/16	BPW207-23		KHPW207-23														B7-23	KH207-23			
Dimensions (mm)																					
12	BPW201	53.75	KHPW201	55.15	30.2	114	81	94	25	11	16	7	55	22	28.6	M10	B1	KH201	PW203	0.68	
15	BPW202		KHPW202														B2	KH202			0.67
17	BPW203		KHPW203														B3	KH203			0.65
20	BPW204	58.60	KHPW204	55.65	33.3	125	91	103	27	11	16	8	62	24.7	31	M10	B4	KH204	PW204	0.83	
25	BPW205	59.50	KHPW205	61.40	36.5	130	94	106	29	11	16	9	69	27	31	M10	B5	KH205	PW205	1.07	
30	BPW206	73.45	KHPW206	76.70	42.9	156	112	128	33	14	21	10	81	30.3	35.7	M12	B6	KH206	PW206	1.81	
35	BPW207	80.35	KHPW207	87.75	47.6	165	119	135	35	14	21	10	91	32.9	38.9	M12	B7	KH207	PW207	2.45	

Lubrication fitting tap size for 1" and smaller shaft sizes, 1/4-28 UNF; for all other sizes, 1/8-27 NPT

INTERCHANGES:	VPS-1-M	LP	PB100	VPE-1-M	LP-E
---------------	---------	----	-------	---------	------

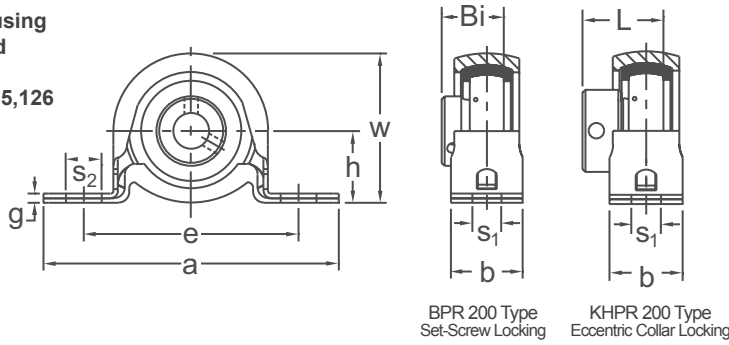


# PRESSED STEEL PILLOW BLOCKS

# BPR / KHPR 200

NORMAL DUTY

Set-Screw/Eccentric Locking  
 Narrow Inner Ring  
 Pressed Steel Housing  
 Rubber Cushioned  
 Non-Relube  
 Insert Detail-pg.125,126  
 Inch and Metric



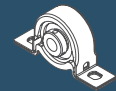
BPR 200 Type  
Set-Screw Locking

KHPR 200 Type  
Eccentric Collar Locking

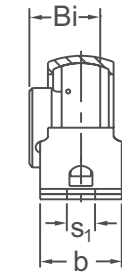
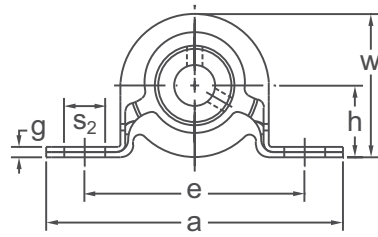
Shaft Diam. (in.)	AMI Unit # Complete with B 200 Type	List Price	AMI Unit # Complete with KH 200 Type	List Price	Dimensions (in.)											Stamping Load Limit (lbs.)	Bolt Size (in.)	Bearing #		Housing #	Rubber Ring #	Weight (lb.)																
					h	a	e		b	s <sub>1</sub>	s <sub>2</sub>	g	w	Bi	L			B	KH																			
							Min.	Max.																														
1/2	BPR1-8	34.70	KHPR201-8	36.10	1	4-1/8	2-7/8	3-1/8	1	13/32	1/2	1/8	2-1/16	0.866	1-1/8	350	3/8	B1-8	KH201-8	PP4	R4	0.46																
5/8	BPR2-10		KHPR202-10																				B2-10	KH202-10	0.44													
3/4	BPR4-12	39.00	KHPR204-12	37.60	1-1/8	4-1/2	3-3/16	3-9/16	1-1/8	13/32	9/16	5/32	2-7/32	0.972	1-7/32	400	3/8	B4-12	KH204-12	PP5	R5	0.53																
7/8	BPR5-14	41.80	KHPR205-14	41.80	1-5/16	4-7/8	3-9/16	3-15/16	1-1/4	13/32	9/16	5/32	2-5/8	1.063	1-7/32	600	3/8	B5-14	KH205-14	PP6	R6	0.77																
15/16	BPR5-15		KHPR205-15																																B5-15	KH205-15		
1	BPR5-16		KHPR205-16																																	B5-16	KH205-16	
1-1/16	BPR6-17	51.85	—	56.70	1-9/16	5-3/4	4	4-1/2	1-5/16	17/32	3/4	3/16	3-1/8	1.193	1-13/32	800	1/2	B6-17	—	PP7	R7	1.17																
1-1/8	BPR6-18		KHPR206-18																																	B6-18	KH206-18	
1-3/16	BPR6-19		KHPR206-19																																		B6-19	KH206-19
1-1/4	BPR6-20		KHPR206-20																																		B6-20	KH206-20
Dimensions (mm)																																						
12	BPR1	37.80	KHPR201	36.10	25.4	104.8	73	79	25.4	10.3	12.7	3.2	52.4	22	28.6	350	M10	B1	KH201	PP4	R4	0.47																
15	BPR2		KHPR202																																B2	KH202	0.45	
17	BPR3		KHPR203																																B3	KH203	0.42	
20	BPR4	39.00	KHPR204	39.60	28.6	114.3	81	91	28.6	10.3	14.3	4	56.4	24.7	31	400	M10	B4	KH204	PP5	R5	0.54																
25	BPR5	41.80	KHPR205	41.80	33.3	123.8	91	100	31.8	10.3	14.3	4	66.7	27	31	600	M10	B5	KH205	PP6	R6	0.78																
30	BPR6	51.85	KHPR206	56.70	39.7	146.1	102	114	33.3	13.5	19.1	4.6	79.4	30.3	35.7	800	M12	B6	KH206	PP7	R7	1.18																

**INTERCHANGES: SSRPS ASRPP SSRPE RPB SR-FM AELRPP LRP**

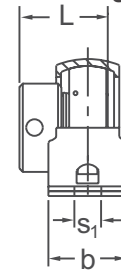




NORMAL DUTY



BPP 200 Type  
Set-Screw Locking



KHPP 200 Type  
Eccentric Collar Locking

Set-Screw/Eccentric Locking  
Narrow Inner Ring  
Pressed Steel Housing  
Non-Relube  
Insert Detail-pg.125,126  
Inch and Metric

Shaft Diam. (in.)	AMI Unit # Complete with B 200 Type	List Price	AMI Unit # Complete with KH 200 Type	List Price	Dimensions (in.)											Stamping Load Limit (lbs.)	Bolt Size (in.)	Bearing #		Housing #	Weight (lb.)
					h	a	e		b	s <sub>1</sub>	s <sub>2</sub>	g	w	Bi	L			B	KH		
							Min.	Max.													
1/2	BPP1-8	36.75	KHPP201-8	38.15	7/8	3-5/8	2-1/2	2-7/8	1	11/32	1/2	1/8	1-3/4	0.866	1-1/8	300	5/16	B1-8	KH201-8	PP3	0.39
5/8	BPP2-10		KHPP202-10		3-5/8	2-7/8	1	13/32	1/2	1/8	2-1/16	0.972	1-7/32	350	3/8	B2-10	KH202-10				
3/4	BPP4-12	37.25	KHPP204-12	38.65	1	4-1/8	2-7/8	3-1/8	1	13/32	1/2	1/8	2-1/16	0.972	1-7/32	350	3/8	B4-12	KH204-12	PP4	0.55
7/8	BPP5-14	38.00	KHPP205-14	39.90	1-1/8	4-1/2	3-3/16	3-9/16	1-1/8	13/32	9/16	5/32	2-7/32	1.063	1-7/32	400	3/8	B5-14	KH205-14	PP5	0.73
15/16	BPP5-15		KHPP205-15															B5-15	KH205-15		
1	BPP5-16		KHPP205-16															B5-16	KH205-16		
1-1/16	BPP6-17	49.00	—	52.25	1-5/16	4-7/8	3-9/16	3-15/16	1-1/4	13/32	9/16	5/32	2-5/8	1.193	1-13/32	600	3/8	B6-17	—	PP6	1.06
1-1/8	BPP6-18		KHPP206-18															B6-18	KH206-18		
1-3/16	BPP6-19		KHPP206-19															B6-19	KH206-19		
1-1/4	BPP6-20		KHPP206-20															B6-20	KH206-20		
1-1/4	BPP7-20	61.45	KHPP207-20	68.85	1-9/16	5-3/4	4	4-1/2	1-5/16	17/32	3/4	3/16	3-1/8	1.295	1-17/32	800	1/2	B7-20	KH207-20	PP7	1.58
1-5/16	BPP7-21		KHPP207-21															B7-21	KH207-21		
1-3/8	BPP7-22		KHPP207-22															B7-22	KH207-22		
1-7/16	BPP7-23		KHPP207-23															B7-23	KH207-23		
Dimensions (mm)																					
12	BPP1	36.75	KHPP201	38.15	22.2	92.1	64	73	25.4	8.7	12.7	3.2	44.5	22	28.6	300	M8	B1	KH201	PP3	0.39
15	BPP2		KHPP202															B2	KH202		
17	BPP3		KHPP203															B3	KH203		
20	BPP4	37.25	KHPP204	38.65	25.4	104.8	73	79	25.4	10.3	12.7	3.2	52.4	24.7	31	350		B4	KH204	PP4	0.55
25	BPP5	38.00	KHPP205	39.90	28.6	114.3	81	91	28.6	10.3	14.3	4	56.4	27	31	400	M10	B5	KH205	PP5	0.73
30	BPP6	49.00	KHPP206	52.25	33.3	123.8	91	100	31.8	10.3	14.3	4	66.7	30.3	35.7	600		B6	KH206	PP6	1.06
35	BPP7	61.45	KHPP207	68.85	39.7	146.1	102	114	33.3	13.5	19.1	4.6	79.4	32.9	38.9	800	M12	B7	KH207	PP7	1.58

INTERCHANGES: SSPS P2B-SL PS25 ASPP SSP SSPE P2B-SLX PB S-FM AELPP SSP-E

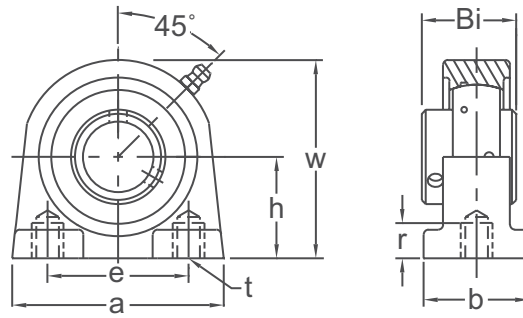


# TAPPED BASE PILLOW BLOCKS

# UCTB / UCPA 200

NORMAL DUTY

**Set-Screw Locking  
Wide Inner Ring  
Cast Iron Housing  
Insert Detail-pg.121,122  
Inch and Metric**



Shaft Diam. (in.)	AMI Unit #	List Price	Dimensions (in.)							Bolt Hole UNC Thread t (in.)	Bearing #	Housing #	Weight (lb.)			
			h	a	e	b	r	w	Bi							
1/2	UCTB201-8	48.40	1-5/16	2-7/8	2	1-1/2	1/2	2-9/16	1.220	3/8-16	UC201-8	TB204	1.43			
5/8	UCTB202-10		1-7/8	3	2	1-1/2	1/2	2-13/16	1.339		UC202-10					
3/4	UCTB204-12		1-11/16	4	3	1-1/2	5/8	3-3/8	1.500		UC204-12					
7/8	UCTB205-14	52.90	1-7/8	4-1/4	3-1/4	1-7/8	3/4	3-3/4	1.689	7/16-14	UC205-14	TB205	1.79			
15/16	UCTB205-15		1-15/16	4-5/8	3-1/2	1-7/8	3/4	3-15/16	1.937		UC205-15					
1	UCTB205-16		2-1/8	5	3-3/4	2	3/4	4-1/4	1.937		UC205-16					
1-1/16	UCTB206-17	66.20	2-1/4	5-1/2	4	2	7/8	4-5/8	2.031	5/8-11	UC206-17	TB206	2.65			
1-1/8	UCTB206-18		2-3/8	5-3/4	4	2	7/8	4-5/8	2.031		UC206-18					
1-3/16	UCTB206-19		2-1/2	5-1/2	4	2	7/8	4-5/8	2.031		UC206-19					
1-1/4	UCTB206-20		2-5/8	5-1/2	4	2	7/8	4-5/8	2.031		UC206-20					
1-1/4	UCTB207-20	82.00	2-1/4	5-1/2	4	2	7/8	4-5/8	2.189	5/8-11	UC207-20	TB207	3.75			
1-5/16	UCTB207-21		2-3/8	5-3/4	4	2	7/8	4-5/8	2.189		UC207-21					
1-3/8	UCTB207-22		2-1/2	5-1/2	4	2	7/8	4-5/8	2.189		UC207-22					
1-7/16	UCTB207-23		2-5/8	5-1/2	4	2	7/8	4-5/8	2.189		UC207-23					
1-1/2	UCTB208-24	100.90	2-1/4	5-1/2	4	2	7/8	4-5/8	2.189	5/8-11	UC208-24	TB208	4.19			
1-9/16	UCTB208-25		2-3/8	5-3/4	4	2	7/8	4-5/8	2.189		UC208-25					
1-5/8	UCTB209-26	109.65	2-1/4	5-1/2	4	2	7/8	4-5/8	2.031	5/8-11	UC209-26	TB209	4.85			
1-11/16	UCTB209-27		2-3/8	5-3/4	4	2	7/8	4-5/8	2.031		UC209-27					
1-3/4	UCTB209-28		2-1/2	5-1/2	4	2	7/8	4-5/8	2.031		UC209-28					
1-7/8	UCTB210-30	130.90	2-1/4	5-1/2	4	2	7/8	4-5/8	2.031	5/8-11	UC210-30	TB210	5.73			
1-15/16	UCTB210-31		2-3/8	5-3/4	4	2	7/8	4-5/8	2.031		UC210-31					
2	UCTB210-32		2-1/2	5-1/2	4	2	7/8	4-5/8	2.031		UC210-32					
2	UCTB211-32	202.70	2-1/4	5-1/2	4	2	7/8	4-5/8	2.189	5/8-11	UC211-32	TB211	6.4			
2-1/8	UCTB211-34		2-3/8	5-3/4	4	2	7/8	4-5/8	2.189		UC211-34					
2-3/16	UCTB211-35		2-1/2	5-1/2	4	2	7/8	4-5/8	2.189		UC211-35					
Dimensions (mm)																
12	UCPA201	48.40	30.2	76	52	38	12	62	31	M10	UC201	PA204	1.45			
15	UCPA202		30.2	76	52	38	12	62	31		M10			UC202		
17	UCPA203		30.2	76	52	38	12	62	31		M10			UC203		
20	UCPA204	48.40	30.2	76	52	38	12	62	31	M14	UC204	PA204	1.34			
25	UCPA205	52.90	36.5	84	56	38	15	72	34		M10			UC205	PA205	1.81
30	UCPA206	66.20	42.9	94	66	48	18	84	38.1		M14			UC206	PA206	2.68
35	UCPA207	82.00	47.6	110	80	48	20	95	42.9	M14	UC207	PA207	3.79			
40	UCPA208	100.90	49.2	116	84	54	20	100	49.2		M14			UC208	PA208	4.24
45	UCPA209	109.65	54.2	120	90	54	25	108	49.2		M14			UC209	PA209	4.91
50	UCPA210	130.90	57.2	130	94	60	25	116	51.6	M16	UC210	PA210	5.80			

Lubrication fitting tap size for 1" and smaller shaft sizes, 1/4-28 UNF; for all other sizes, 1/8-27 NPT

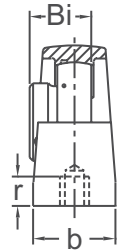
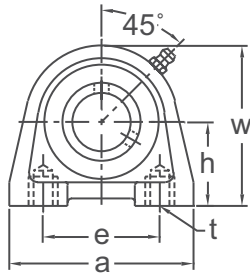
**INTERCHANGES: VTBS TB-SC STB PT3U-N TBC25 UCUP TB**

# BSHE / KHSHE / UCSHE / UGSHE 200

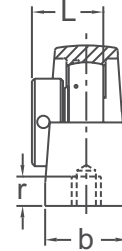
# TAPPED BASE PILLOW BLOCKS



NORMAL DUTY



BSHE 200 Type  
Set-Screw Locking



KHSHE 200 Type  
Eccentric Collar Locking

**Set-Screw/Eccentric Locking**  
Narrow Inner Ring  
Cast Iron Housing  
Insert Detail-pg.125-126  
Inch and Metric

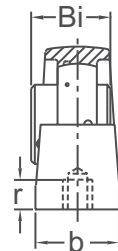
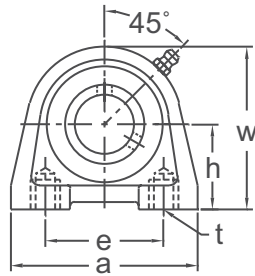
Shaft Diam. (in.)	AMI Unit # Complete with B 200 Type	List Price	AMI Unit # Complete with KH 200 Type	List Price	Dimensions (in.)								Bolt Hole Thread t (mm)	Bearing #		Housing #	Weight (lb.)
					h	a	e	b	r	w	Bi	L		B	KH		
3/4	BSHE204-12	91.85	KHSHE204-12	93.50	1.311	2.756	2.000	1.260	0.393	2.520	0.972	1-7/32	M8	B4-12	KH204-12	SHE04	0.80
7/8	BSHE205-14	106.95	KHSHE205-14	110.00	1.437	3.150	2.000	1.417	0.492	2.756	1.063	1-7/32	M10	B5-14	KH205-14	SHE05	1.20
15/16	BSHE205-15		B5-15											KH205-15			
1	BSHE205-16		B5-16											KH205-16			
1-1/16	BSHE206-17	126.50	—	131.30	1.689	3.858	3.000	1.575	0.492	3.228	1.193	1-13/32	M10	B6-17	—	SHE06	1.80
1-1/8	BSHE206-18		B6-18											KH206-18			
1-3/16	BSHE206-19		B6-19											KH206-19			
1-1/4	BSHE206-20		B6-20											KH206-20			
1-1/4	BSHE207-20	167.20	KHSHE207-20	176.70	1.874	4.331	3.252	1.772	0.492	3.661	1.295	1-17/32	M10	B7-20	KH207-20	SHE07	3.00
1-5/16	BSHE207-21		B7-21											KH207-21			
1-3/8	BSHE207-22		B7-22											KH207-22			
1-7/16	BSHE207-23		B7-23											KH207-23			
1-1/2	BSHE208-24	207.60	KHSHE208-24	199.90	1.937	4.567	3.500	1.890	0.591	3.898	1.398	1-23/32	M12	B8-24	KH208-24	SHE08	3.40
1-5/8	—	—	KHSHE209-26	220.80	2.126	4.724	3.752	1.890	0.591	4.213	—	1-23/32	M12	—	KH209-26	SHE09	4.00
1-11/16	—	—	KHSHE209-27											—	KH209-27		
1-3/4	—	—	KHSHE209-28											—	KH209-28		
1-7/8	—	—	KHSHE210-30	257.45	2.252	5.315	4.000	2.087	0.787	4.528	—	1-23/32	M16	—	KH210-30	SHE10	4.80
1-15/16	—	—	KHSHE210-31											—	KH210-31		
2	—	—	KHSHE211-32	290.70	2.520	5.906	4.646	2.362	0.787	4.921	—	1-29/32	M16	—	KH211-32	SHE11	6.50
2-1/8	—	—	KHSHE211-34											—	KH211-34		
2-3/16	—	—	KHSHE211-35	—	KH211-35												

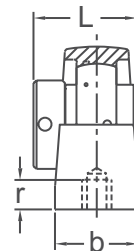
Dimensions (mm)																	
Shaft Diam. (mm)	AMI Unit # Complete with UC 200 Type	List Price	AMI Unit # Complete with UG 200 Type	List Price	h	a	e	b	r	w	Bi	L	Bolt Hole Thread t (mm)	Bearing # UC	Bearing # UG	Housing #	Weight (lb.)
20	BSHE204	91.85	KHSHE204	93.50	33.3	70	50.8	32	10.0	64	24.7	31.0	M8	B4	KH204	SHE04	0.80
25	BSHE205	106.95	KHSHE205	110.00	36.5	80	50.8	36	12.5	70	27.0	31.0	M10	B5	KH205	SHE05	1.20
30	BSHE206	126.50	KHSHE206	131.30	42.9	98	76.2	40	12.5	82	30.3	35.7	M10	B6	KH206	SHE06	1.80
35	BSHE207	167.20	KHSHE207	176.70	47.6	110	82.6	45	12.5	93	32.9	38.9	M10	B7	KH207	SHE07	2.80
40	BSHE208	207.60	KHSHE208	199.90	49.2	116	88.9	48	15.0	99	35.5	43.7	M12	B8	KH208	SHE08	3.40
45	—	—	KHSHE209	220.80	54.0	120	95.3	48	15.0	107	—	43.7	M12	—	KH209	SHE09	4.00
50	—	—	KHSHE210	257.45	57.2	135	101.6	53	20.0	115	—	43.7	M16	—	KH210	SHE10	4.60
55	—	—	KHSHE211	290.70	64.0	150	118.0	60	20.0	125	—	48.7	M16	—	KH211	SHE11	6.50

Lubrication fitting tap size for 1" and smaller shaft sizes, 1/4-28 UNF; for all other sizes, 1/8-27 NPT

**INTERCHANGES: PSHE PSHEY**



UCSHE 200 Type  
Set-Screw Locking



UGSHE 200 Type  
Eccentric Collar Locking

**Set-Screw/Eccentric Locking**  
Wide Inner Ring  
Cast Iron Housing  
Insert Detail-pg.113,115  
Metric

Shaft Diam. (mm)	AMI Unit # Complete with UC 200 Type	List Price	AMI Unit # Complete with UG 200 Type	List Price	Dimensions (mm)								Bolt Hole Thread t (mm)	Bearing #		Housing #	Weight (lb.)
					h	a	e	b	r	w	Bi	L		UC	UG		
20	UCSHE204	93.75	UGSHE204	98.50	33.3	70	50.8	32	10.0	64	31.0	43.7	M8	UC204	UG204	SHE04	1.00
25	UCSHE205	110.75	UGSHE205	121.30	36.5	80	50.8	36	12.5	70	34.0	44.4	M10	UC205	UG205	SHE05	1.40
30	UCSHE206	128.25	UGSHE206	140.40	42.9	98	76.2	40	12.5	82	38.1	48.4	M10	UC206	UG206	SHE06	2.00
35	UCSHE207	170.05	UGSHE207	187.60	47.6	110	82.6	45	12.5	93	42.9	51.1	M10	UC207	UG207	SHE07	3.20
40	UCSHE208	195.65	UGSHE208	213.60	49.2	116	88.9	48	15.0	99	49.2	56.3	M12	UC208	UG208	SHE08	3.80
45	UCSHE209	213.95	UGSHE209	233.50	54.0	120	95.3	48	15.0	107	49.2	56.3	M12	UC209	UG209	SHE09	4.40
50	UCSHE210	253.25	UGSHE210	265.85	57.2	135	101.6	53	20.0	115	51.6	62.7	M16	UC210	UG210	SHE10	5.40
55	UCSHE211	282.85	UGSHE211	305.70	64.0	150	118.0	60	20.0	125	55.6	71.4	M16	UC211	UG211	SHE11	7.20
60	UCSHE212	367.40	UGSHE212	318.95	69.9	150	118.0	61	20.0	140	65.1	77.8	M16	UC212	UG212	SHE12	9.80

Lubrication fitting tap size for 25mm and smaller shaft sizes, 1/4-28 UNF; for all other sizes, 1/8-27 NPT

**INTERCHANGES: RSHE RSHEY**

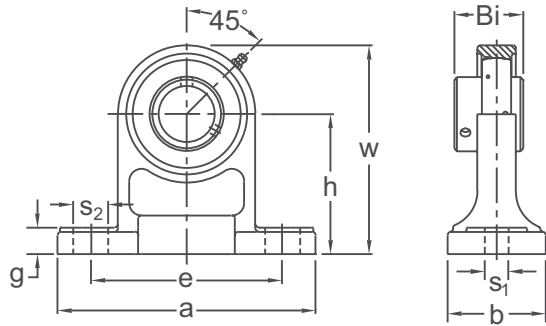


# PEDESTAL BASE PILLOW BLOCKS

# UCPH 200

NORMAL DUTY

Set-Screw Locking  
Wide Inner Ring  
Cast Iron Housing  
Insert Detail-pg.121-122  
Inch and Metric



Shaft Diam. (in.)	AMI Unit #	List Price	Dimensions (in.)										Bolt Size (in.)	Bearing #	Housing #	Weight (lb.)	
			h	a	e		b	s <sub>1</sub>	s <sub>2</sub>	g	w	Bi					
					Min.	Max.											
1/2	UCPH201-8	75.40	2-3/4	5	3-3/8	4-1/8	1-9/16	1/2	3/4	19/32	3-31/32	1.220	3/8	UC201-8	PH204	2.20	
5/8	UCPH202-10				3-3/4	4-1/2	1-31/32	1/2	3/4	5/8	4-1/2	1.339		UC202-10		2.18	
3/4	UCPH204-12				4-1/2	5-1/16	1-31/32	1/2	3/4	5/8	4-1/2	1.339		UC204-12		2.11	
7/8	UCPH205-14	87.55	3-5/32	5-1/2	3-3/4	4-1/2	1-31/32	1/2	3/4	5/8	4-1/2	1.339	3/8	UC205-14	PH205	2.64	
15/16	UCPH205-15				4-1/2	5-1/16	1-31/32	1/2	3/4	5/8	4-1/2	1.339		UC205-15		2.64	
1	UCPH205-16				4-1/2	5-1/16	1-31/32	1/2	3/4	5/8	4-1/2	1.339		UC205-16		2.64	
1-1/16	UCPH206-17	114.20	3-17/32	6-1/2	4-7/16	5-1/16	1-31/32	21/32	13/16	23/32	5-1/8	1.500	1/2	UC206-17	PH206	4.18	
1-1/8	UCPH206-18				5-1/16	1-31/32	21/32	13/16	23/32	5-1/8	1.500	UC206-18					
1-3/16	UCPH206-19				5-1/16	1-31/32	21/32	13/16	23/32	5-1/8	1.500	UC206-19					
1-1/4	UCPH206-20				5-1/16	1-31/32	21/32	13/16	23/32	5-1/8	1.500	UC206-20					
1-1/4	UCPH207-20	134.05	3-3/4	6-9/16	4-11/16	5-5/16	2-3/8	21/32	13/16	3/4	5-1/2	1.689	1/2	UC207-20	PH207	5.29	
1-5/16	UCPH207-21				5-5/16	2-3/8	21/32	13/16	3/4	5-1/2	1.689	UC207-21					
1-3/8	UCPH207-22				5-5/16	2-3/8	21/32	13/16	3/4	5-1/2	1.689	UC207-22					
1-7/16	UCPH207-23				5-5/16	2-3/8	21/32	13/16	3/4	5-1/2	1.689	UC207-23					
1-1/2	UCPH208-24	164.90	3-15/16	7-1/4	4-7/8	5-7/8	2-3/4	21/32	1	3/4	5-7/8	1.937	1/2	UC208-24	PH208	6.12	
1-9/16	UCPH208-25				5-7/8	2-3/4	21/32	1	3/4	5-7/8	1.937	UC208-25					
1-5/8	UCPH209-26	188.00	4-1/8	7-1/2	5-1/4	6-1/4	2-3/4	21/32	1	25/32	6-3/16	1.937	1/2	UC209-26	PH209	7.05	
1-11/16	UCPH209-27				6-1/4	2-3/4	21/32	1	25/32	6-3/16	1.937	UC209-27					
1-3/4	UCPH209-28				6-1/4	2-3/4	21/32	1	25/32	6-3/16	1.937	UC209-28					
1-7/8	UCPH210-30	213.30	4-11/32	8-1/8	5-7/8	6-5/8	2-3/4	25/32	1	7/8	6-1/2	2.031	5/8	UC210-30	PH210	7.93	
1-15/16	UCPH210-31				6-5/8	2-3/4	25/32	1	7/8	6-1/2	2.031	UC210-31					
2	UCPH210-32				6-5/8	2-3/4	25/32	1	7/8	6-1/2	2.031	UC210-32					
Dimensions (mm)																	
12	UCPH201	75.40	70	127	86	105	40	13	19	15	101	31	M10	UC201	PH204	2.23	
15	UCPH202				86	105	40	13	19	15	101	31		UC202		2.21	
17	UCPH203				86	105	40	13	19	15	101	31		UC203		2.19	
20	UCPH204	75.40	70	127	86	105	40	13	19	15	101	31	M10	UC204	PH204	2.14	
25	UCPH205	87.55	80	140	95	114	50	13	19	16	114	34	M10	UC205	PH205	2.68	
30	UCPH206	114.20	90	165	113	129	50	17	21	18	130	38.1	M14	UC206	PH206	4.24	
35	UCPH207	134.05	95	167	119	135	60	17	21	19	140	42.9	M14	UC207	PH207	5.35	
40	UCPH208	164.90	100	184	124	149	70	17	25	19	149	49.2		UC208	PH208	6.24	
45	UCPH209	188.00	105	190	133	159	70	17	25	20	157	49.2		UC209	PH209	7.14	
50	UCPH210	213.30	110	206	149	168	70	20	25	22	165	51.6	M16	UC210	PH210	8.03	

Lubrication fitting tap size for 1" and smaller shaft sizes, 1/4-28 UNF; for all other sizes, 1/8-27 NPT

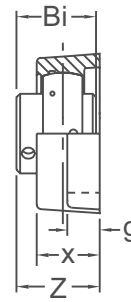
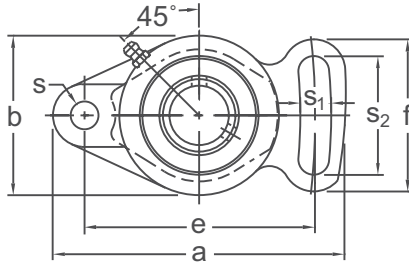
**INTERCHANGES:** UCPH UCHP

# UCFA 200

## TWO-BOLT ADJUSTABLE FLANGE UNITS



NORMAL DUTY

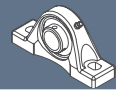


**Set-Screw Locking  
Wide Inner Ring  
Cast Iron Housing  
Insert Detail-pg.121-122  
Inch and Metric**

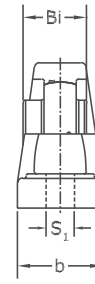
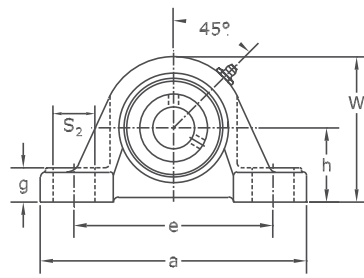
Shaft Diam. (in.)	AMI Unit #	List Price	Dimensions (in.)											Bolt Size (in.)	Bearing #	Housing #	Weight (lb.)	
			a	e	g	x	s	s <sub>1</sub>	s <sub>2</sub>	b	f	Z	Bi					
1/2	UCFA201-8	54.14	4-1/64	3-1/16	15/32	1	25/64	25/64	1-37/64	2-3/8	2-1/8	1.312	1.220	5/16	UC201-8	FA204	1.12	
5/8	UCFA202-10														UC202-10			
3/4	UCFA204-12														UC204-12			
7/8	UCFA205-14	59.20	4-59/64	3-55/64	35/64	1-1/16	15/32	33/64	2	2-11/16	2-9/16	1.406	1.339	3/8	UC205-14	FA205	1.45	
15/16	UCFA205-15														UC205-15			
1	UCFA205-16														UC205-16			
1-1/16	UCFA206-17	69.60	5-43/64	4-39/64	35/64	1-7/32	15/32	33/64	2-9/32	3-5/32	2-53/64	1.593	1.500	3/8	UC206-17	FA206	2.20	
1-1/8	UCFA206-18														UC206-18			
1-3/16	UCFA206-19														UC206-19			
1-1/4	UCFA206-20														UC206-20			
1-1/4	UCFA207-20	84.45	6-11/32	5-1/8	5/8	1-11/32	35/64	19/32	2-19/32	3-35/64	3-15/64	1.750	1.689	1/2	UC207-20	FA207	3.08	
1-5/16	UCFA207-21														UC207-21			
1-3/8	UCFA207-22														UC207-22			
1-7/16	UCFA207-23														UC207-23			
1-1/2	UCFA208-24	100.90	6-57/64	5-43/64	5/8	1-13/32	35/64	19/32	2-51/64	3-15/16	3-27/64	2.016	1.937	1/2	UC208-24	FA208	3.74	
1-9/16	UCFA208-25														UC208-25			
1-5/8	UCFA209-26	109.65	7-1/8	5-53/64	45/64	1-1/2	5/8	43/64	2-53/64	4-1/4	3-35/64	2.063	1.937	1/2	UC209-26	FA209	4.4	
1-11/16	UCFA209-27														UC209-27			
1-3/4	UCFA209-28														UC209-28			
1-7/8	UCFA210-30	130.90	7-1/2	6-3/16	45/64	1-37/64	5/8	43/64	3	4-17/32	3-45/64	2.156	2.031	1/2	UC210-30	FA210	5.28	
1-15/16	UCFA210-31														UC210-31			
2	UCFA210-32														UC210-32			
2	UCFA211-32	163.50	8-5/8	7-1/4	25/32	1-11/16	5/8	43/64	3-3/8	5-1/8	4-3/32	2.297	2.189	1/2	UC211-32	FA211	7.48	
2-1/8	UCFA211-34														UC211-34			
2-3/16	UCFA211-35														UC211-35			
Dimensions (mm)																		
12	UCFA201	54.15	102	78	12	25.4	10	10	40	60	54	33.3	31	M8	UC201	FA204	1.12	
15	UCFA202														UC202			
17	UCFA203														UC203			
20	UCFA204	54.15	102	78	12	25.4	10	10	40	60	54	33.3	31	M8	UC204	FA204	1.03	
25	UCFA205														UC205			
30	UCFA206	59.20	125	98	14	27	12	13	51	68	65	35.7	34	M10	UC205	FA205	1.47	
35	UCFA207	69.60	144	117	14	31	12	13	58	80	72	40.2	38.1	M10	UC206	FA206	2.23	
40	UCFA208	84.45	161	130	16	34	14	15	66	90	82	44.4	42.9	M12	UC207	FA207	3.12	
45	UCFA209	100.90	175	144	16	36	14	15	71	100	87	51.2	49.2	M12	UC208	FA208	3.79	
50	UCFA210	109.65	181	148	18	38	16	17	72	108	90	52.2	49.2	M14	UC209	FA209	4.46	
55	UCFA211	130.90	190	157	18	40	16	17	76	115	94	54.6	51.6	M14	UC210	FA210	5.35	
		163.50	219	184	20	43	16	17	86	130	104	58.4	55.6	M14	UC211	FA211	7.58	

Lubrication fitting tap size for 1" and smaller shaft sizes, 1/4-28 UNF; for all other sizes, 1/8-27 NPT

**INTERCHANGES: UCFA**



MEDIUM DUTY



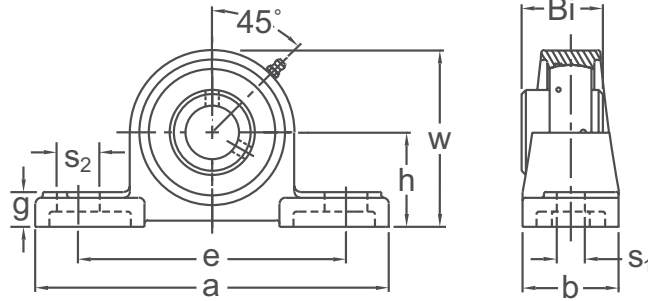
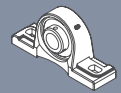
**Set-Screw Locking  
Wide Inner Ring  
Cast Iron Housing  
Insert detail-pg.131  
Inch and Metric**

Shaft Diam. (in.)	AMI Unit #	List Price	Dimensions (in.)											Bolt Size (in.)	Bearing #	Housing #	Weight (lb.)
			h	a	e		b	s <sub>1</sub>	s <sub>2</sub>	g	w	Bi					
					Min.	Max.											
1	UCPX05-16	87.00	1-3/4	6-1/4	4-3/16	5-3/16	2	21/32	1	23/32	3-7/16	1.500	1/2	UCX05-16	PX05	3.31	
1-1/8	UCPX06-18	101.70	1-7/8	6-7/8	4-1/2	5-1/2	2-1/4	21/32	1	25/32	3-13/16	1.689	1/2	UCX06-18	PX06	4.19	
1-3/16	UCPX06-19													UCX06-19			
1-1/4	UCPX06-20													UCX06-20			
1-1/4	UCPX07-20	127.00	2-1/8	8	5	6-3/8	2-1/4	21/32	1-3/16	7/8	4-1/4	1.937	1/2	UCX07-20	PX07	5.95	
1-3/8	UCPX07-22													UCX07-22			
1-7/16	UCPX07-23													UCX07-23			
1-1/2	UCPX08-24	152.00	2-5/16	8-3/4	5-1/2	6-3/4	2-5/8	25/32	1-1/4	1-1/32	4-17/32	1.937	5/8	UCX08-24	PX08	7.71	
1-5/8	UCPX09-26	164.10	2-5/16	8-3/4	5-7/16	6-13/16	2-5/8	25/32	1-5/16	1-1/32	4-39/64	2.031	5/8	UCX09-26	PX09	7.71	
1-11/16	UCPX09-27													UCX09-27			
1-3/4	UCPX09-28													UCX09-28			
1-7/8	UCPX10-30	197.00	2-1/2	9-9/16	5-15/16	7-9/16	2-7/8	25/32	1-7/16	1-1/8	4-31/32	2.189	5/8	UCX10-30	PX10	9.26	
1-15/16	UCPX10-31													UCX10-31			
2	UCPX10-32													UCX10-32			
2	UCPX11-32	263.00	2-3/4	10-1/4	6-9/16	7-15/16	3-1/8	1	1-7/16	1-3/16	5-9/16	2.563	3/4	UCX11-32	PX11	13.00	
2-3/16	UCPX11-35													UCX11-35			
2-1/4	UCPX11-36													UCX11-36			
2-3/8	UCPX12-38	315.10	3	11-1/4	7-1/8	8-7/8	3-1/4	1	1-5/8	1-5/16	6-7/64	2.563	3/4	UCX12-38	PX12	15.87	
2-7/16	UCPX12-39													UCX12-39			
2-1/2	UCPX13-40													UCX13-40			
2-11/16	UCPX14-43	426.60	3-1/2	13	7-7/8	10-1/8	3-1/2	1-1/16	2	1-5/16	6-57/64	3.063	7/8	UCX14-43	PX14	24.46	
2-3/4	UCPX14-44													UCX14-44			
2-15/16	UCPX15-47													UCX15-47			
3	UCPX15-48	484.80	3-1/2	13	7-7/8	10-1/8	3-1/2	1-1/16	2	1-5/16	6-31/32	3.252	7/8	UCX15-48	PX15	25.13	
3-3/16	UCPX16-51													UCX16-51			
3-1/4	UCPX17-52													UCX17-52			
3-7/16	UCPX17-55	702.00	4	15	9-11/16	12-9/16	4-3/8	1-1/16	2-5/16	1-21/32	8-7/32	3.780	7/8	UCX17-55	PX17	37.69	
3-1/2	UCPX18-56													UCX18-56			
3-15/16	UCPX20-63													UCX20-63			
4	UCPX20-64	1240.00	5	17	11-3/4	14-3/4	4-3/4	1-5/16	2-1/2	2-1/16	10	4.626	1	UCX20-64	PX20	72.73	
Dimensions (mm)																	
25	UCPX05	87.00	44.4	159	106	132	51	17	25	18	87	38.1	M14	UCX05	PX05	3.31	
30	UCPX06	101.70	47.6	175	114	140	57	17	25	20	97	42.9		UCX06	PX06	4.19	
35	UCPX07	127.00	54	203	127	162	57	17	30	22	108	49.2		UCX07	PX07	5.95	
40	UCPX08	152.00	58.7	222	140	172	66	20	32	26	115	49.2	M16	UCX08	PX08	7.71	
45	UCPX09	164.10	58.7	222	138	173	66	20	33	26	117	51.6		UCX09	PX09	7.71	
50	UCPX10	197.00	63.5	243	151	192	74	20	36	29	126	55.6		UCX10	PX10	9.26	
55	UCPX11	263.00	69.8	260	167	202	79	25	36	30	141	65.1	M20	UCX11	PX11	13.00	
60	UCPX12	315.10	76.2	286	181	225	82	25	41	33	155	65.1		UCX12	PX12	15.87	
65	UCPX13	360.20	76.2	286	181	225	82	21	41	33	155	74.6		UCX13	PX13	16.31	
70	UCPX14	426.60	88.9	330	200	257	89	27	51	33	175	77.8	M22	UCX14	PX14	24.46	
75	UCPX15	484.80	88.9	330	200	257	89	27	51	33	177	82.6		UCX15	PX15	25.13	
80	UCPX16	655.70	101.6	381	246	319	102	27	59	42	203	85.7		UCX16	PX16	38.35	
85	UCPX17	702.00	101.6	381	246	319	111	27	59	42	209	96	M22	UCX17	PX17	37.69	
90	UCPX18	914.00	101.6	381	245	321	111	27	60	45	206	104		UCX18	PX18	37.47	
100	UCPX20	1240.00	127	432	299	375	121	33	64	52	254	117.5		M27	UCX20	PX20	72.73

Lubrication fitting tap size 1/8-27 NPT

**INTERCHANGES: VPS-3 P2B-SCM YASM C-35 SYM-TF UCPX MP**





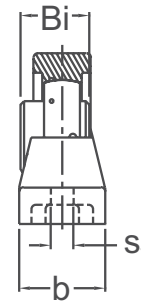
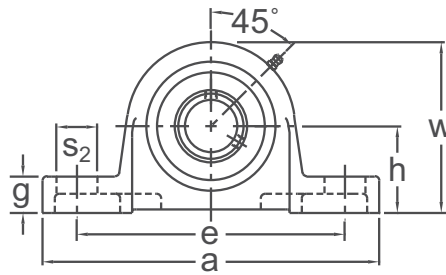
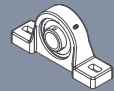
Set-Screw Locking  
Wide Inner Ring  
Cast Iron Housing  
Insert detail-pg.134  
Inch and Metric

HEAVY DUTY

Shaft Diam (in.)	AMI Unit #	List Price	Dimensions (in.)										Bolt Size (in.)	Bearing #	Housing #	Weight (lb.)
			h	a	e		b	s <sub>1</sub>	s <sub>2</sub>	g	w	Bi				
					Min.	Max.										
1	UCP305-16	115.10	1-49/64	6-7/8	4-31/32	5-17/32	1-3/4	21/32	25/32	43/64	3-1/4	1.496	1/2	UC305-16	P305	3.53
1-3/16	UCP306-19	160.30	1-31/32	7-1/16	5-7/32	5-25/32	2	21/32	25/32	7/8	3-11/16	1.693	1/2	UC306-19	P306	4.19
1-1/4	UCP307-20	195.40	2-13/64	8-1/4	5-3/4	6-3/4	2-1/4	21/32	1	7/8	4-1/8	1.890	1/2	UC307-20	P307	5.95
1-7/16	UCP307-23															
1-1/2	UCP308-24	227.40	2-23/64	8-11/16	6-3/16	7-5/16	2-3/8	21/32	1-1/16	63/64	4-9/16	2.047	1/2	UC308-24	P308	7.27
1-11/16	UCP309-27	281.70	2-41/64	9-5/8	6-15/16	8-1/16	2-5/8	25/32	1-3/16	1	5-1/32	2.244	5/8	UC309-27	P309	9.92
1-3/4	UCP309-28															
1-7/8	UCP310-30	335.80	2-61/64	10-13/16	7-5/8	9-1/8	3-1/16	25/32	1-3/8	1-3/16	5-5/8	2.402	5/8	UC310-30	P310	13.66
1-15/16	UCP310-31															
2	UCP311-32	449.60	3-5/32	12-3/16	8-3/8	10-1/8	3-1/8	25/32	1-1/2	1-7/32	6-1/16	2.598	5/8	UC311-32	P311	16.97
2-3/16	UCP311-35															
2-7/16	UCP312-39	550.10	3-11/32	13-5/32	9-1/8	10-5/8	3-3/8	1	1-1/2	1-27/64	6-1/2	2.795	3/4	UC312-39	P312	20.50
2-1/2	UCP313-40	580.10	3-35/64	13-3/8	9-1/2	11	3-1/2	1	1-1/2	1-37/64	6-27/32	2.953	3/4	UC313-40	P313	21.60
2-11/16	UCP314-43	700.50	3-47/64	14-3/16	10-5/16	11-11/16	3-1/2	1-1/16	1-9/16	1-21/32	7-3/8	3.071	7/8	UC314-43	P314	25.13
2-3/4	UCP314-44															
2-15/16	UCP315-47	869.80	3-15/16	15-5/64	10-11/16	12-1/16	3-7/8	1-1/16	1-9/16	1-37/64	7-59/64	3.228	7/8	UC315-47	P315	29.97
3	UCP315-48															
3-3/16	UCP316-51	988.60	4-11/64	15-3/4	11-1/16	12-7/16	4-3/8	1-1/16	1-9/16	1-25/32	8-7/32	3.386	7/8	UC316-51	P316	36.15
3-1/4	UCP317-52	1059.50	4-13/32	16-9/16	11-27/32	13-13/32	4-3/8	1-5/16	1-25/32	1-45/64	8-11/16	3.780	1	UC317-52	P317	40.99
3-7/16	UCP318-55	1777.85	4-41/64	16-15/16	12-7/32	13-25/32	4-3/8	1-5/16	1-45/64	1-31/32	9-1/4	3.780	1	UC318-55	P318	46.06
3-1/2	UCP318-56	1236.30														
3-3/4	UCP319-60	1372.60	4-59/64	18-1/2	13-19/32	14-31/32	4-3/4	1-1/2	1-31/32	2-3/64	10	4.055	1-1/8	UC319-60	P319	58.41
3-15/16	UCP320-63	1627.70	5-33/64	19-5/16	14-5/32	15-27/32	4-3/4	1-13/32	1-31/32	2-11/64	10-29/32	4.252	1-1/8	UC320-63	P320	75.60
4	UCP320-64															
4-7/16	UCP322-71	2195.10	5-29/32	20-11/16	14-7/8	16-5/8	5-1/2	1-9/16	2-5/32	2-1/4	11-45/64	4.606	1-1/4	UC322-71	P322	94.8
Dimensions (mm)																
25	UCP305	115.10	45	175	126	141	45	17	20	17	83	38	M14	UC305	P305	3.57
30	UCP306	160.30	50	180	133	147	50	17	20	22	94	43	M14	UC306	P306	4.24
35	UCP307	195.40	56	210	146	172	56	17	25	22	105	48	M14	UC307	P307	6.06
40	UCP308	227.40	60	220	157	186	60	17	27	25	116	52	M14	UC308	P308	7.36
45	UCP309	281.70	67	245	176	205	67	20	30	26	128	57	M16	UC309	P309	10.0
50	UCP310	335.80	75	275	194	232	78	20	35	30	143	61	M16	UC310	P310	13.8
55	UCP311	449.60	80	310	213	257	80	20	38	31	154	66	M16	UC311	P311	17.2
60	UCP312	550.10	85	334	232	270	85	25	38	36	165	71	M20	UC312	P312	20.7
65	UCP313	580.10	90	340	241	279	90	25	38	40	174	75	M20	UC313	P313	21.9
70	UCP314	700.50	95	360	262	297	90	27	40	42	187	78	M22	UC314	P314	25.4
75	UCP315	869.80	100	383	272	306	100	27	40	40	201	82	M22	UC315	P315	30.3
80	UCP316	988.60	106	400	281	316	110	27	40	45	209	86	M22	UC316	P316	36.6
85	UCP317	1059.50	112	420	301	341	110	33	45	43	221	96	M27	UC317	P317	41.5
90	UCP318	1236.30	118	430	310	350	110	33	43	50	235	96	M27	UC318	P318	46.6
95	UCP319	1372.60	125	470	337	380	120	38	50	52	253	103	M30	UC319	P319	59.1
100	UCP320	1627.70	140	490	360	402	120	36	50	55	277	108	M30	UC320	P320	76.5
105	UCP321	1942.90	140	490	360	402	120	36	50	55	277	112	M30	UC321	P321	81.6
110	UCP322	2195.10	150	525	378	422	140	40	55	57	297	117	M33	UC322	P322	94.8
120	UCP324	2844.10	160	565	428	472	140	40	55	67	320	126	M33	UC324	P324	119
130	UCP326	3732.80	180	600	458	502	140	40	55	80	355	135	M33	UC326	P326	161
140	UCP328	4535.00	200	615	478	522	140	40	55	80	390	145	M33	UC328	P328	199

Lubrication fitting tap size 1/8-27 NPT

INTERCHANGES: UCP3



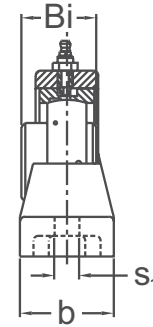
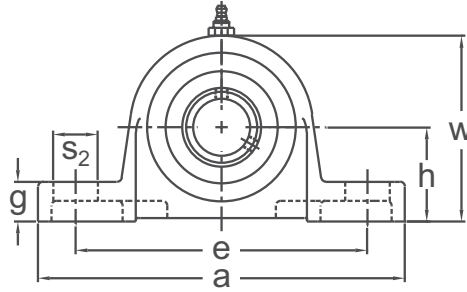
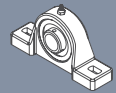
Set-Screw Locking  
Wide Inner Ring  
Cast Iron Housing  
Insert detail-pg.134  
Inch and Metric

HEAVY DUTY

Shaft Diam (in)	AMI Unit #	List Price	Dimensions (in.)											Bolt Size (in.)	Bearing #	Housing #	Weight (lb.)
			h	a	e		b	s <sub>1</sub>	s <sub>2</sub>	g	w	Bi					
					Min.	Max.											
1-3/16	UCPU306-19	233.20	2-1/8	8-1/4	5-7/8	7	2.250	0.551	1.063	15/16	4.250	1.693	1/2	UC306-19	P-U306	6.63	
1-1/4	UCPU307-20	248.90	2-3/8	9-1/4	6-47/64	7-63/64	2.362	0.625	1.125	1	4.685	1.890	9/16	UC307-20	P-U307	7.66	
1-7/16	UCPU307-23													UC307-23			
1-11/16	UCPU309-27	351.40	2-7/8	10-1/4	7-5/8	8-7/8	3.000	0.625	1.125	1-5/16	5.625	2.244	9/16	UC309-27	P-U309	12.28	
1-3/4	UCPU309-28													UC309-28			
1-7/8	UCPU310-30	417.40	3-1/8	11-9/64	8-17/64	9-33/64	3.150	0.625	1.125	1-3/8	6.219	2.402	9/16	UC310-30	P-U310	16.02	
1-15/16	UCPU310-31													UC310-31			
2	UCPU311-32	523.80	3-1/2	12-41/64	9-49/64	10-49/64	3.386	0.787	1.250	1-1/2	6.811	2.598	3/4	UC311-32	P-U311	20.52	
2-3/16	UCPU311-35													UC311-35			
2-7/16	UCPU312-39	638.50	3-5/8	13-3/4	10-5/8	11-7/8	3.500	0.787	1.375	1-5/8	7.197	2.795	3/4	UC312-39	P-U312	29.72	
2-11/16	UCPU314-43	870.20	4	14-5/8	11-5/64	12-35/64	3.750	1.024	1.614	1-3/4	7.938	3.071	7/8	UC314-43	P-U314	33.42	
2-3/4	UCPU314-44													UC314-44			
2-15/16	UCPU315-47	1181.30	4-1/4	15-1/8	11-1/4	12-3/4	4.000	1.024	1.654	1-3/4	8.295	3.228	7/8	UC315-47	P-U315	37.12	
3	UCPU315-48													UC315-48			
3-3/16	UCPU316-51	1323.90	4-9/16	15-25/64	11-1/2	13	4.173	1.063	1.614	1-59/64	9.016	3.386	1	UC316-51	P-U316	40.30	
3-7/16	UCPU318-55	2402.25	5-1/8	16-9/64	12-1/8	13-5/8	5.000	1.063	1.614	2-1/4	10.079	3.780	1	UC318-55	P-U318	60.30	
3-1/2	UCPU318-56													UC318-56			
3-15/16	UCPU320-63	3134.70	5-11/16	17-21/64	13-7/8	15-1/8	5.000	1.063	1.496	2-9/16	11.063	4.252	1	UC320-63	P-U320	78.70	
4	UCPU320-64													UC320-64			
Dimensions (mm)																	
30	UCPU306	233.20	54.0	210	149	178	57.2	14	27	23.8	108.0	43	M12	UC306	P-U306	6.65	
35	UCPU307	248.90	60.3	235	171	203	60	16	28.5	25.4	119.0	48	M14	UC307	P-U307	7.68	
45	UCPU309	351.40	73.0	261	194	225	76	16	28.5	33.3	143.0	57	M14	UC309	P-U309	12.31	
50	UCPU310	417.40	79.4	283	210	242	80	16	28.5	35	158.0	61	M14	UC310	P-U310	16.06	
55	UCPU311	523.80	88.9	321	248	273	86	20	32	38	173.0	66	M18	UC311	P-U311	20.58	
60	UCPU312	638.50	92.1	349	270	302	88.9	20	35	41.3	182.8	71	M20	UC312	P-U312	29.79	
70	UCPU314	870.20	101.6	372	281	319	95.2	26	41	44.4	201.6	78		UC314	P-U314	33.55	
75	UCPU315	1181.30	108	384	286	324	101.8	26	42	44.4	210.7	82	M24	UC315	P-U315	37.30	
80	UCPU316	1323.90	115.9	391	292	330	106	27	41	49	229	86		UC316	P-U316	40.30	
90	UCPU318	2402.25	130.2	410	308	346	127	27	41	57	256	96		UC318	P-U318	60.30	
100	UCPU320	3134.70	144.5	440	352	384	127	27	38	65	281	108	M24	UC320	P-U320	78.70	

Lubrication fitting tap size 1/8-27 NPT

**INTERCHANGES: P-U3**



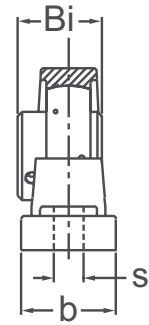
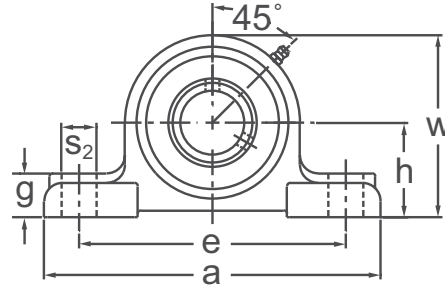
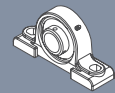
Set-Screw Locking  
Wide Inner Ring  
Cast Iron Housing  
Expansion Type  
Insert detail-pg.134  
Inch and Metric

HEAVY DUTY

Shaft Diam (in.)	AMI Unit #	List Price	Dimensions (in.)										Bolt Size (in.)	Bearing #	Housing #	Weight (lb.)	
			h	a	e		b	s <sub>1</sub>	s <sub>2</sub>	g	w	Bi					
					Min.	Max.											
1-1/4	UCPEU307-20	414.00	2-3/8	9-1/4	6-47/64	7-63/64	2.362	0.625	1.125	1	4.685	1.890	9/16	UC307-20	PE-U307	7.80	
1-7/16	UCPEU307-23				UC307-23												
1-11/16	UCPEU309-27	518.60	2-7/8	10-1/4	7-5/8	8-7/8	3.000	0.625	1.125	1-5/16	5.625	2.244	9/16	UC309-27	PE-U309	12.10	
1-3/4	UCPEU309-28				UC309-28												
1-7/8	UCPEU310-30	616.90	3-1/8	11-9/64	8-17/64	9-33/64	3.150	0.625	1.125	1-3/8	6.219	2.402	9/16	UC310-30	PE-U310	15.74	
1-15/16	UCPEU310-31				UC310-31												
2	UCPEU311-32	761.40	3-1/2	12-41/64	9-49/64	10-49/64	3.386	0.787	1.250	1-1/2	6.811	2.598	3/4	UC311-32	PE-U311	20.62	
2-3/16	UCPEU311-35				UC311-35												
2-7/16	UCPEU312-39	865.80	3-5/8	13-3/4	10-5/8	11-7/8	3.500	0.787	1.375	1-5/8	7.197	2.795	3/4	UC312-39	PE-U312	25.59	
2-11/16	UCPEU314-43	1030.50	4	14-5/8	11-5/64	12-35/64	3.750	1.024	1.614	1-3/4	7.938	3.071	7/8	UC314-43	PE-U314	31.42	
2-3/4	UCPEU314-44				UC314-44												
2-15/16	UCPEU315-47	1523.40	4-1/4	15-1/8	11-1/4	12-3/4	4.000	1.024	1.654	1-3/4	8.295	3.228	7/8	UC315-47	PE-U315	36.76	
3	UCPEU315-48				UC315-48												
3-3/16	UCPEU316-51	1884.10	4-9/16	15-25/64	11-1/2	13	4.173	1.063	1.614	1-59/64	9.016	3.386	1	UC316-51	PE-U316	36.94	
3-7/16	UCPEU318-55	2805.75	5-1/8	16-9/64	12-1/8	13-5/8	5.000	1.063	1.614	2-1/4	10.079	3.780	1	UC318-55	PE-U318	60.30	
3-1/2	UCPEU318-56				UC318-56												
3-15/16	UCPEU320-63	3461.60	5-11/16	17-21/64	14	15	5.000	1.063	1.496	2-9/16	11.063	4.252	1	UC320-63	PE-U320	73.75	
4	UCPEU320-64				UC320-64												
Dimensions (mm)																	
35	UCPEU307	414.00	60.3	235	171	203	60	16	28.5	25.4	119.0	48		UC307	PE-U307	7.82	
45	UCPEU309	518.60	73.0	261	194	225	76	16	28.5	33.3	143.0	57	M14	UC309	PE-U309	12.13	
50	UCPEU310	616.90	79.4	283	210	242	80	16	28.5	35	158.0	61		UC310	PE-U310	15.78	
55	UCPEU311	761.40	88.9	321	248	273	86	20	32	38	173.0	66	M18	UC311	PE-U311	20.68	
60	UCPEU312	865.80	92.1	349	270	302	88.9	20	35	41.3	182.8	71	M18	UC312	PE-U312	25.66	
70	UCPEU314	1030.50	101.6	372	281	319	95.2	26	41	44.4	201.6	78	M24	UC314	PE-U314	31.52	
75	UCPEU315	1523.40	108	384	286	324	101.8	26	42	44.4	210.7	82		UC315	PE-U315	36.76	
80	UCPEU316	1884.10	115.9	391	292	330	106	27	41	49	229	86	M24	UC316	PE-U316	36.94	
90	UCPEU318	2805.75	130.2	410	308	346	127	27	41	57	256	96		UC318	PE-U318	60.30	
100	UCPEU320	3461.60	144.5	440	356	381	127	27	38	65	281	108	M24	UC320	PE-U320	73.75	

Lubrication fitting tap size 1/8-27 NPT

INTERCHANGES: PE-U3



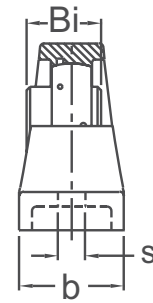
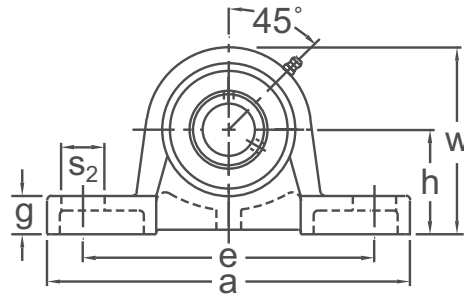
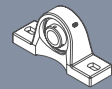
Set-Screw Locking  
Wide Inner Ring  
Cast Iron Housing  
Insert detail-pg.134  
Inch and Metric

HEAVY DUTY

Shaft Diam (in.)	AMI Unit #	List Price	Dimensions (in.)											Bolt Size (in.)	Bearing #	Housing #	Weight (lb.)
			h	a	e		b	s <sub>1</sub>	s <sub>2</sub>	g	w	Bi					
					Min.	Max.											
1-3/16	UCAO306-19	211.40	1-7/8	6-13/16	5.088	5.662	1-59/64	0.669	0.787	29/32	3-25/32	1.693	1/2	UC306-19	AO306	4.11	
1-1/4	UCAO307-20	223.50	2-1/8	7-9/16	5.713	6.287	2-1/8	0.669	0.787	63/64	4-3/32	1.890	1/2	UC307-20	AO307	5.50	
1-7/16	UCAO307-23													UC307-23			
1-1/2	UCAO308-24	262.70	2-3/8	8-1/2	6.351	7.149	2-13/32	0.787	1.024	1-1/16	4-21/32	2.047	5/8	UC308-24	AO308	7.82	
1-11/16	UCAO309-27	312.70	2-5/8	9-7/16	7.101	7.899	2-41/64	0.787	1.024	1-3/16	5-1/8	2.244	5/8	UC309-27	AO309	10.26	
1-3/4	UCAO309-28													UC309-28			
1-7/8	UCAO310-30	374.10	2-13/16	10-7/16	7.851	8.649	2-61/64	0.787	1.024	1-19/64	5-19/32	2.402	5/8	UC310-30	AO310	14.14	
1-15/16	UCAO310-31													UC310-31			
2	UCAO311-32	461.40	3-1/16	11-5/16	8.608	9.392	3-9/64	0.906	1.142	1-1/2	6-1/32	2.598	3/4	UC311-32	AO311	17.52	
2-3/16	UCAO311-35													UC311-35			
2-7/16	UCAO312-39	551.00	3-5/16	12-19/64	9.358	10.142	3-5/16	0.906	1.142	1-37/64	6-17/32	2.795	3/4	UC312-39	AO312	22.23	
2-11/16	UCAO314-43	963.40	3-13/16	14-11/64	10.786	11.714	3-25/32	1.024	1.339	1-13/16	7-9/16	3.071	7/8	UC314-43	AO314	33.54	
2-3/4	UCAO314-44													UC314-44			
2-15/16	UCAO315-47	1012.60	4-1/8	15-1/8	11.536	12.464	4-1/16	1.024	1.339	1-59/64	8-5/64	3.228	7/8	UC315-47	AO315	41.02	
3	UCAO315-48													UC315-48			
Dimensions (mm)																	
30	UCAO306	211.40	47.6	173	129	144	49	17	20	23	96	43	M14	UC306	AO306	4.13	
35	UCAO307	223.50	54.0	192	145	160	54	17	20	25	104	48	M14	UC307	AO307	5.52	
40	UCAO308	262.70	60.3	216	161	182	61	20	26	27	118	52	M16	UC308	AO308	7.85	
45	UCAO309	312.70	66.7	240	180	201	67	20	26	30	130	57	M16	UC309	AO309	10.29	
50	UCAO310	374.10	71.4	265	199	220	75	20	26	33	142	61	M16	UC310	AO310	14.18	
55	UCAO311	461.40	77.8	287	219	239	80	23	29	38	153	66	M20	UC311	AO311	17.58	
60	UCAO312	551.00	84.1	312	238	258	84	23	29	40	166	71	M20	UC312	AO312	22.30	
70	UCAO314	963.40	96.8	360	274	298	96	26	34	46	192	78	M22	UC314	AO314	33.64	
75	UCAO315	1012.60	104.8	384	293	317	103	26	34	49	205	82	M22	UC315	AO315	41.20	

Lubrication fitting tap size 1/8-27 NPT

**INTERCHANGES: AMI exclusive**



Set-Screw Locking  
Wide Inner Ring  
Cast Iron Housing  
Insert detail-pg.134  
Inch and Metric

HEAVY DUTY

Shaft Diam (in.)	AMI Unit #	List Price	Dimensions (in.)										Bolt Size (in.)	Bearing #	Housing #	Weight (lb.)	
			h	a	e		b	s <sub>1</sub>	s <sub>2</sub>	g	w	Bi					
					Min.	Max.											
1-3/16	UCSAO306-19	190.20	2-3/8	8-1/4	6.141	7.109	2-3/8	0.625	0.984	7/8	4-1/4	1.693	1/2	UC306-19	SAO306	5.65	
1-1/4	UCSAO307-20	249.30	2-3/4	10-5/8	7.789	8.743	2-3/4	0.750	1.102	15/16	4-13/16	1.890	5/8	UC307-20	SAO307	7.86	
1-7/16	UCSAO307-23													UC307-23			
1-1/2	UCSAO308-24	296.20	3-1/8	11-3/8	8.500	9.532	3-1/8	0.750	1.141	1-3/16	5-45/64	2.047	5/8	UC308-24	SAO308	12.04	
1-11/16	UCSAO309-27	353.50	3-1/8	11-3/8	8.500	9.532	3-1/8	0.750	1.141	1-3/16	5-45/64	2.244	5/8	UC309-27	SAO309	12.06	
1-3/4	UCSAO309-28													UC309-28			
1-7/8	UCSAO310-30	397.70	3-1/8	11-3/8	8.500	9.532	3-1/8	0.750	1.141	1-19/64	5-53/64	2.402	5/8	UC310-30	SAO310	15.47	
1-15/16	UCSAO310-31													UC310-31			
2	UCSAO311-32	526.10	3-3/4	12-19/32	9.500	11.000	3-1/2	0.875	1.375	1-13/32	6-45/64	2.598	3/4	UC311-32	SAO311	19.16	
2-3/16	UCSAO311-35													UC311-35			
2-7/16	UCSAO312-39	625.40	4-1/8	13-3/4	10.625	11.875	4	0.875	1.375	1-1/2	7-21/64	2.795	3/4	UC312-39	SAO312	30.41	
2-11/16	UCSAO314-43	1068.85	4-9/16	15-23/64	11.500	12.500	4-3/8	0.984	1.375	1-3/4	8-1/4	3.071	7/8	UC314-43	SAO314	35.17	
2-3/4	UCSAO314-44													UC314-44			
2-15/16	UCSAO315-47	1136.20	4-9/16	15-23/64	11.343	13.375	4-3/8	0.984	1.891	1-57/64	8-45/64	3.228	7/8	UC315-47	SAO315	39.86	
3	UCSAO315-48													UC315-48			
3-3/16	UCSAO316-51	1566.60	4-9/16	15-23/64	11.343	13.375	4-3/8	0.984	1.891	1-59/64	8-25/32	3.386	7/8	UC316-51	SAO316	40.03	
3-7/16	UCSAO318-55	2350.60	5-1/8	16-7/64	12.603	14.147	4-3/4	1.142	1.772	2-1/4	9-7/8	3.780	1	UC318-55	SAO318	53.86	
3-1/2	UCSAO318-56													UC318-56			
3-15/16	UCSAO320-63	2649.90	5-11/16	17-21/64	14.018	15.482	5-1/8	1.142	1.732	2-9/16	11-1/16	4.252	1	UC320-63	SAO320	74.70	
4	UCSAO320-64													UC320-64			
Dimensions (mm)																	
30	UCSAO306	190.20	60.3	209	156	181	60	16	25	22	108	43	M14	UC306	SAO306	5.67	
35	UCSAO307	249.30	69.8	270	198	222	70	19	28	24	122	48	M16	UC307	SAO307	7.88	
40	UCSAO308	296.20	79.4	289	216	242	79	19	29	30	145	52	M16	UC308	SAO308	12.07	
45	UCSAO309	353.50	79.4	289	216	242	79	19	29	30	145	57	M16	UC309	SAO309	12.09	
50	UCSAO310	397.70	79.4	289	216	242	79	19	29	33	148	61	M16	UC310	SAO310	15.51	
55	UCSAO311	526.10	95.2	320	241	279	89	22	35	36	170	66	M20	UC311	SAO311	19.22	
60	UCSAO312	625.40	104.8	349	270	302	101	22	35	38	186	71	M20	UC312	SAO312	30.48	
70	UCSAO314	1068.85	115.9	390	292	318	111	25	35	44	210	78	M22	UC314	SAO314	35.27	
75	UCSAO315	1136.20	115.9	390	288	340	111	25	48	48	221	82	M22	UC315	SAO315	40.04	
80	UCSAO316	1566.60	115.9	390	288	340	111	25	48	49	223	86	M22	UC316	SAO316	40.23	
90	UCSAO318	1771.40	130.2	409	320	359	120	29	45	57	251	96	M27	UC318	SAO318	54.08	
100	UCSAO320	2649.90	144.5	440	356	393	130	29	44	65	281	108	M27	UC320	SAO320	75.00	

Lubrication fitting tap size 1/8-27 NPT

INTERCHANGES: P2U3