

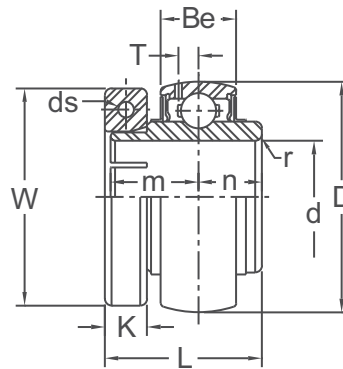


ACCU-LOC® BALL BEARINGS

UE 200

NORMAL DUTY

Accu-Loc Concentric Locking Collar
Wide Inner Ring
Steel Cage
AISI 52100 Steel
w/Black Oxide Finish
0°F - 212°F
Contact Seal and Slinger
Prelubricated / Relubricatable
Inch and Metric

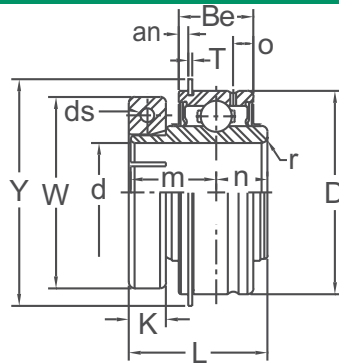


Shaft Diam. (in.) d1	AMI Unit #	List Price	Dimensions (in.)										Basic Load Rating (lbf.)		Weight (lb.)	
			D	L	Be	r	n	m	T	W	K	ds(UNC)	Dynamic Cr	Static Cor		
3/4	UE204-12	62.40	1.8504	1.299	0.669	0.059	0.500	0.720	0.177	1.724	0.374	8-32	2890	1500	0.51	
7/8	UE205-14	64.50	2.0472	1.394	0.669	0.059	0.563	0.780	0.177	1.929	0.374	8-32	3150	1780	0.62	
15/16	UE205-15															
1	UE205-16															
1-1/8	UE206-18	85.30	2.4409	1.567	0.748	0.059	0.626	0.874	0.201	2.185	0.374	8-32	4410	2540	0.90	
1-3/16	UE206-19															
1-1/4	UE206-20															
1-1/4	UE207-20	113.80	2.8346	1.728	0.787	0.079	0.689	1.000	0.228	2.421	0.433	10-24	5820	3460	1.39	
1-3/8	UE207-22									2.520						
1-7/16	UE207-23															
1-1/2	UE208-24	116.00	3.1496	1.976	0.827	0.079	0.748	1.189	0.244	2.677	0.433	10-24	6590	4020	1.70	
1-11/16	UE209-27	131.50	3.3465	1.976	0.866	0.079	0.748	1.189	0.256	2.913	0.433	10-24	7420	4610	1.87	
1-3/4	UE209-28															
1-15/16	UE210-31	143.10	3.5433	2.071	0.906	0.079	0.748	1.283	0.256	3.189	0.571	1/4-20	7980	5220	2.34	
2	UE210-32															
2	UE211-32	167.20	3.9370	2.228	0.945	0.098	0.874	1.315	0.287	3.189	0.571	1/4-20	9700	6610	3.13	
2-3/16	UE211-35									3.622						
2-7/16	UE212-39	196.30	4.3307	2.622	1.024	0.098	1.000	1.563	0.303	4.055	0.687	5/16-18	11800	8120	4.54	
			Dimensions (mm)										Basic Load Rating (kgf.)			
20	UE204	61.30	47	33.0	17	1.5	12.7	18.3	4.5	43.8	9.5	M4x0.7x16	1310	680	0.51	
25	UE205	63.50	52	35.4	17	1.5	14.3	19.8	4.5	49.0	9.5		1430	800	0.62	
30	UE206	84.50	62	39.8	19	1.5	15.9	22.2	5.1	55.5	9.5		2000	1150	0.90	
35	UE207	111.20	72	43.9	20	2	17.5	25.4	5.8	64.0	11.0	M5x0.8x20	2640	1570	1.39	
40	UE208	115.30	80	50.2	21	2	19	30.2	6.2	68.0	11.0		2990	1830	1.70	
45	UE209	133.20	85	50.2	22	2	19	30.2	6.5	74.0	11.0		3350	2090	1.87	
50	UE210	143.80	90	52.6	23	2	19	32.6	6.5	81.0	14.5	M6x1x25	3600	2370	2.34	
55	UE211	184.70	100	56.6	24	2.5	22.2	33.4	7.3	92.0	14.5	M6x1x25	4400	3000	3.13	
60	UE212	199.90	110	66.6	26	2.5	25.4	39.7	7.7	103.0	17.4	M8x1.25x25	5350	3700	4.54	

INTERCHANGES: VB-2 INS-DL KMB-45 2-1T



NORMAL DUTY



Accu-Loc Concentric Locking Collar
 Wide Inner Ring
 Steel Cage
 AISI 52100 Steel
 w/Black Oxide Finish
 0°F - 212°F
 Contact Seal and Slinger
 Cylindrical O.D.
 Prelubricated / Relubricatable
 Inch and Metric

Shaft Diam. (in.)	AMI Unit #	List Price	Dimensions (in.)													Basic Load Rating (lbf.)		Weight (lb.)
			D	L	Be	r	O	n	m	W	K	an	T	Y(max)	ds(UNC)	Dynamic Cr	Static Cor	
3/4	SUE204-12	62.40	1.8504	1.299	5/8	0.059	0.150	13/32	13/16	1.724	0.374	3/32	0.042	2.075	8-32	2890	1500	0.64
1	SUE205-16	64.50	2.0472	1.394	3/4	0.059	13/64	33/64	55/64	1.929	0.374	3/32	0.042	2.280	8-32	3150	1780	0.82
1-1/8	SUE206-18	85.30	2.4409	1.567	7/8	0.059	7/32	5/8	7/8	2.185	0.374	1/8	0.065	2.665	8-32	4410	2540	1.04
1-3/16	SUE206-19																	
1-1/4	SUE206-20																	
1-1/4	SUE207-20																	
1-3/8	SUE207-22	113.80	2.8346	1.728	15/16	0.079	7/32	11/16	1	2.421	0.433	1/8	0.065	3.095	10-24	5820	3460	1.54
1-7/16	SUE207-23	116.00	3.1496	1.976	1-3/32	0.079	1/4	3/4	1-3/16	2.677	0.433	1/8	0.065	3.410	10-24	6590	4020	2.23
1-1/2	SUE208-24																	
1-11/16	SUE209-27	131.50	3.3465	1.976	1-3/32	0.079	1/4	3/4	1-3/16	2.913	0.433	1/8	0.065	3.606	10-24	7420	4610	2.45
1-3/4	SUE209-28																	
1-15/16	SUE210-31	143.10	3.5433	2.071	1-1/8	0.079	19/64	3/4	1-9/32	3.189	0.571	1/8	0.095	3.799	1/4-20	7980	5220	2.87
2	SUE211-32	167.20	3.9370	2.228	1-3/16	0.098	19/64	7/8	1-5/16	3.189	0.571	1/8	0.095	4.193	1/4-20	9700	6610	3.46
2-3/16	SUE211-35									3.622								
2-7/16	SUE212-39	196.30	4.3307	2.622	1-1/4	0.098	19/64	1	1-9/16	4.055	0.687	1/8	0.095	4.591	5/16-18	11800	8120	5.03
			Dimensions (mm)													Basic Load Rating (kgf.)		
20	SUE204	61.30	47	33.0	15.9	1.5	3.8	10.3	20.6	43.8	9.5	2.38	1.07	52.7	M4x0.7	1310	680	0.64
25	SUE205	63.50	52	35.4	19.0	1.5	5.2	13.1	21.8	49.0	9.5	2.38	1.07	57.9		1430	800	0.82
30	SUE206	84.50	62	39.8	22.2	1.5	5.6	15.9	22.2	55.5	9.5	3.18	1.65	67.7		2000	1150	1.04
35	SUE207	111.20	72	43.9	23.8	2.0	5.6	17.5	25.4	64.0	11.0	3.18	1.65	78.6	M5x0.8	2640	1570	1.54
40	SUE208	115.30	80	50.2	27.8	2.0	6.4	19.0	30.2	68.0	11.0	3.18	1.65	86.6		2990	1830	2.23
45	SUE209	133.20	85	50.2	27.8	2.0	6.4	19.0	30.2	74.0	11.0	3.18	1.65	91.6		3350	2090	2.45
50	SUE210	143.80	90	52.6	28.6	2.0	7.5	19.0	32.5	81.0	14.5	3.18	2.41	96.5	M6x1	3600	2370	2.87
55	SUE211	184.70	100	56.6	30.2	2.5	7.5	22.2	33.3	92.0	14.5	3.18	2.41	106.5	M6x1	4400	3000	3.46
60	SUE212	199.90	110	66.6	31.8	2.5	7.5	25.4	39.7	103.0	17.4	3.18	2.41	116.6	M8x1.25	5350	3700	5.03

INTERCHANGES: ER-K ER-T

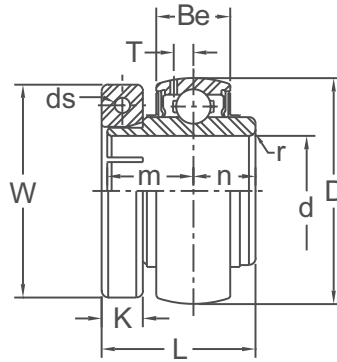


ACCU-LOC® BALL BEARINGS

UEX 00

MEDIUM DUTY

Concentric Locking
52100 Bearing Steel
w/Black Oxide Finish
Wide Inner Ring
Steel Cage,
AISI 52100 Steel w/ Black Oxide Finish,
0 ° F ~ 212° F
Contact Seal and Slinger
Pre-lubricated / Re-lubricatable
Inch Sizes Only



Shaft Diam. (in.)	AMI Unit #	List Price	Dimensions (in.)										Basic Load Rating (lbf.)		Weight (lb.)
			D	L	Be	r	n	m	T	W	K	ds(UNC)	Dynamic Cr	Static Cor	
1	UEX05-16	132.80	2.4409	1-35/64	3/4	0.059	5/8	7/8	0.201	1-59/64	3/8	8-32	4410	2540	0.90
1-3/16	UEX06-19	169.05	2.8346	1-3/4	25/32	0.059	11/16	1	0.228	2-3/16	3/8	8-32	5820	3460	1.36
1-7/16	UEX07-23	180.45	3.1496	1-31/32	53/64	0.079	3/4	1-3/16	0.244	2-33/64	7/16	10-24	6590	4020	1.72
1-1/2	UEX08-24	201.00	3.3465	1-31/32	55/64	0.079	3/4	1-3/16	0.256	2-43/64	7/16	10-24	7420	4610	2.02
1-11/16	UEX09-27	209.30	3.5433	2-5/64	29/32	0.079	3/4	1-9/32	0.256	2-29/32	7/16	10-24	7980	5220	2.39
1-3/4	UEX09-28	209.30	3.5433	2-5/64	29/32	0.079	3/4	1-9/32	0.256	2-29/32	7/16	10-24	7980	5220	2.29
1-15/16	UEX10-31	269.60	3.9370	2-15/64	15/16	0.079	7/8	1-5/16	0.287	3-3/16	37/64	1/4-20	9700	6610	3.03
2-3/16	UEX11-35	302.50	4.3307	2-39/64	1-1/32	0.098	1	1-9/16	0.303	3-5/8	37/64	1/4-20	11800	8120	4.09

INTERCHANGES: 3-1T / VB-3 / INS-DLM / KMB55