



better products. better solutions.

Aluminum Conveyors and Linear Motion



World
Class
Solutions

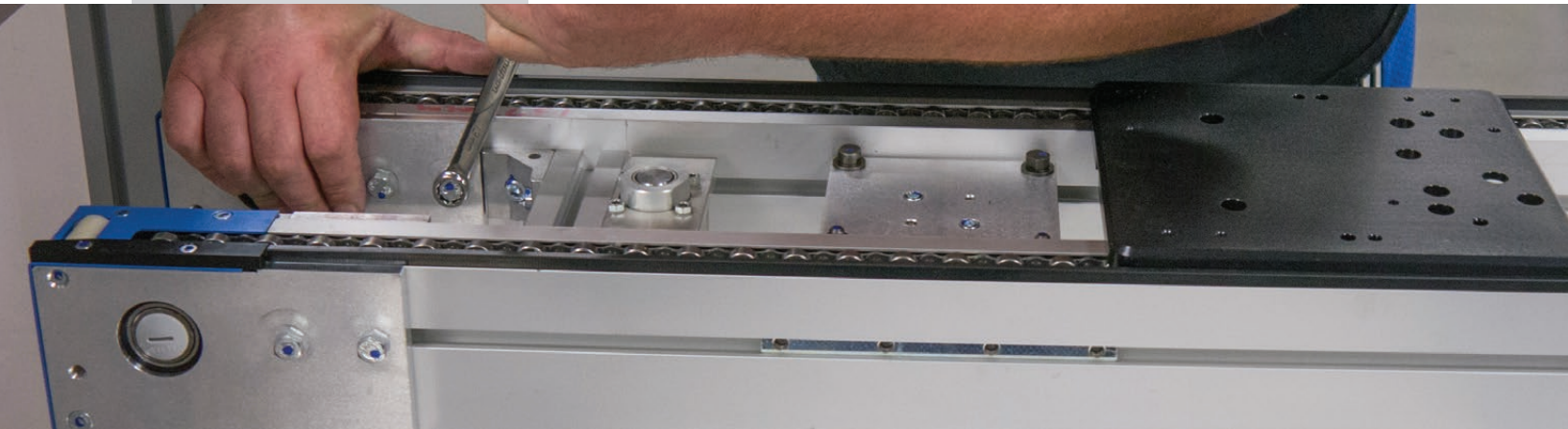


Introduction to mk

mk North America, Inc. is a member of the mk Technology Group and a leading worldwide manufacturer of aluminum conveyors, pallet-handling systems, stainless steel conveyors, and extruded aluminum framing.

Unsurpassed variety, maximum flexibility and easy integration are reasons mk has become the supplier of choice for machine builders, system integrators and manufacturing companies around the globe.

Since 1988 mk North America has been providing diverse industrial know-how, superb quality, constant innovation and application engineering excellence. mk North America offers you the perfect solution for any application.



better products. better solutions.

At mk North America we believe in offering not only better products, but also better solutions. We offer the most extensive product line in the industry; featuring more than 20 different types of conveyors, and 10 different linear motion modules. This allows us to partner with you to provide just the right solution for your needs.

Our broad offering and years of experience in material handling allows us to provide the best equipment for your individual needs. Our innovative conveying and linear motion solutions, both standard and custom, have proven themselves in the automotive, manufacturing, machine builder, metal working, packaging, and printing industries to name a few.

When ordering our conveyors and/or linear motion modules you will experience firsthand the benefits of our innovative designs, competitive pricing and exceptional customer service.

At mk we are dedicated to providing you better products and better solutions.

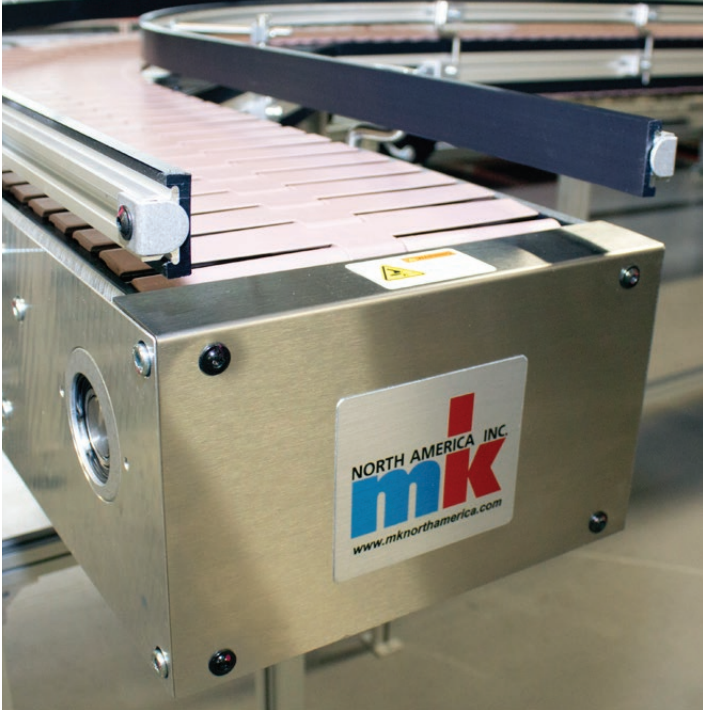
The mk Advantage

- ✓ Robust construction and high quality components decrease downtime and increase productivity
- ✓ Modular design reduces engineering costs and lead-times
- ✓ Technical application assistance
- ✓ Competitive pricing
- ✓ Innovative designs
- ✓ Custom solutions

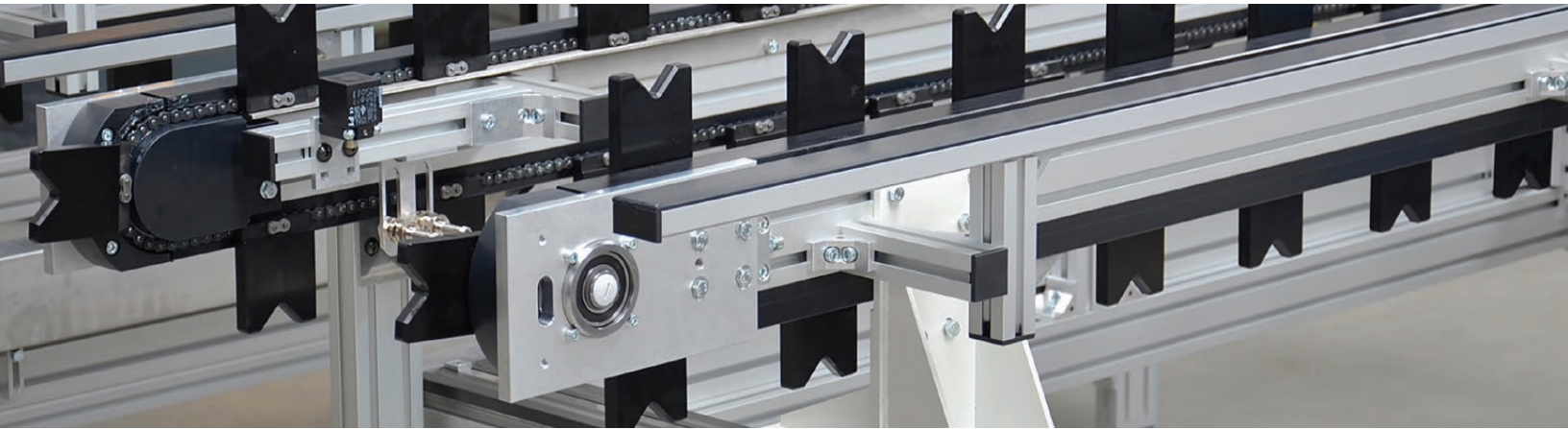
Product Offering

	Page	Belt	Plastic Modular Belt	Timing Belt	Chain	Flat Top Chain	Roller
CONVEYORS							
DGF-P 2001	10	✓					
GUF-P 2000	9	✓					
GUF-P 2041	9	✓					
GUF-P MINI	9	✓					
KFG-P 2000	10	✓					
KGF-P 2000	9	✓					
KFM-P 2040	13		✓				
KMF-P 2040	13		✓				
KTF-P 2010	17				✓		
MBF-P 2040	13		✓				
RBM-P 2255	21						✓
RBS-P 2065/2066/2255	21						✓
RBT-P 2255	21						✓
SBF-P 2000	19					✓	
SBF-P 2254	19					✓	
SPU 2040	19					✓	
SRF-P 2010	19				✓		
SRF-P 2012	17				✓		
SRT-P 2005	19					✓	
TKU 2040	17				✓		
ZRF-P 2010	15			✓			
ZRF-P 2040	15			✓			
LINEAR MOTION							
LZR 2000	31			✓			
LZR 2004	31			✓			
LZR 2005	31						
LZR 2011	31						
VST 2011	31						
VST 2015	31						

Cleated Belt	Fixtures	Curves	Inclines	Gliding
			✓	
✓				
✓			✓	
✓			✓	
		✓		
		✓		
✓			✓	
		✓		
		✓		
		✓		
		✓	✓	
		✓		
	✓			
✓	✓			
				✓
				✓
				✓
				✓



The mk North America Difference



Support

mk North America believes in supporting our customers from the initial inquiry through the delivery of their system and beyond. We have a dedicated sales and engineering staff to manage your project. All orders include detailed 3D and 2D models for your review and approval of the entire system. mk assembles and tests all material-handling systems prior to shipping. mk also offers FAT, start up assistance and installation as well as all replacement and spare parts.

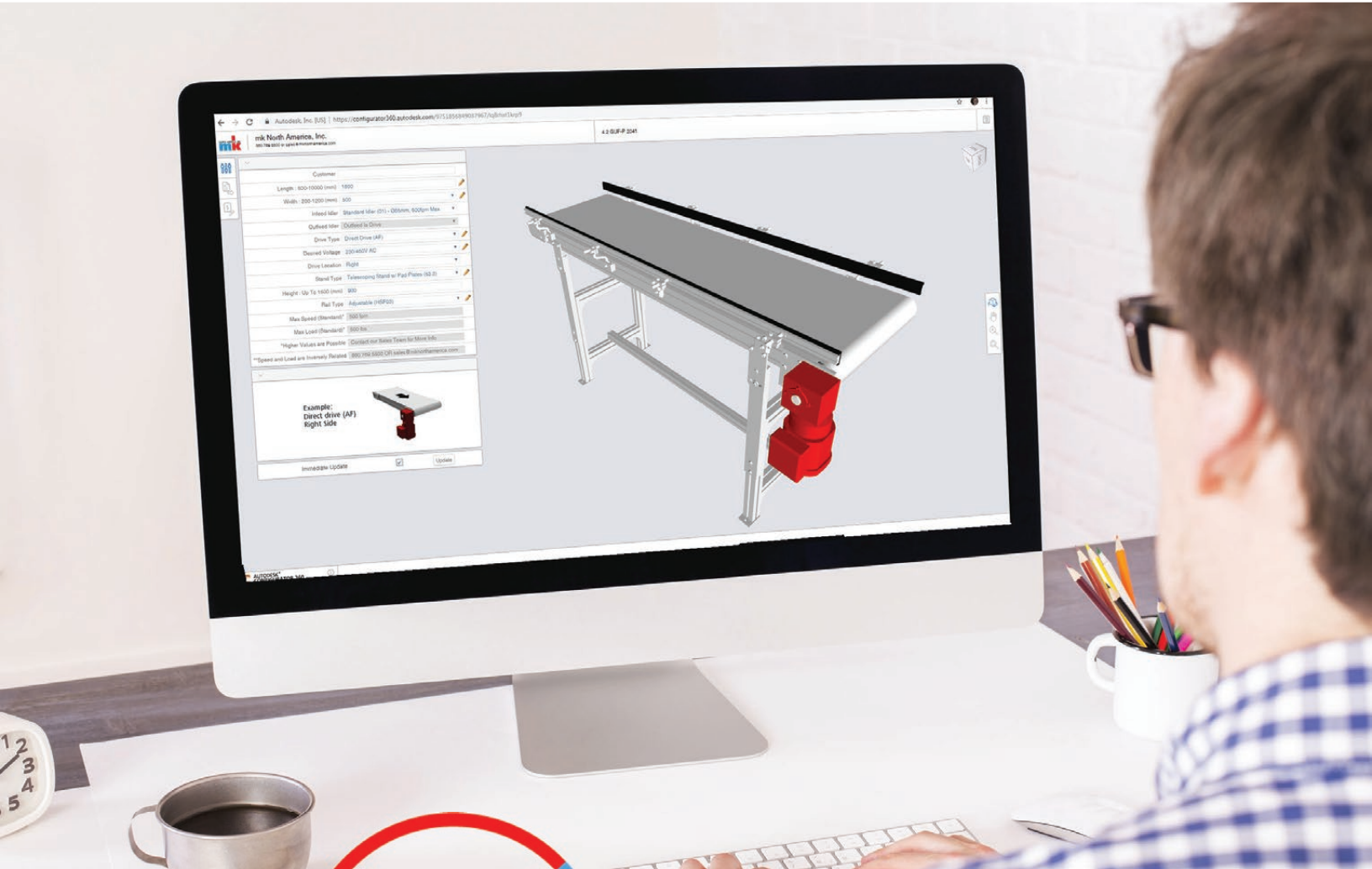
Customizations

mk North America believes in offering not only a better product, but also a better solution. We understand how the performance of your production line affects your business. Regardless of what makes your material handling application unique – temperature, environmental concerns, handling requirements, or space constraints – mk can provide a custom solution that meets your needs and keeps your business moving.

Advantages

- ✓ Easy installation: All mk products are assembled and tested prior to shipping
- ✓ Easy integration: All mk products work together and are fully compatible
- ✓ Design without compromise: mk offers more products and flexibility than anyone else
- ✓ Cost-effective: Save time and money by using standard mk products to build custom solutions
- ✓ High quality components: Reduce operating expenses and increase productivity
- ✓ Experience: Providing customers with functional and cost-effective solutions since 1988
- ✓ Engineering support: Full technical and design assistance before, during and after the sale

Online Conveyor System Modeling



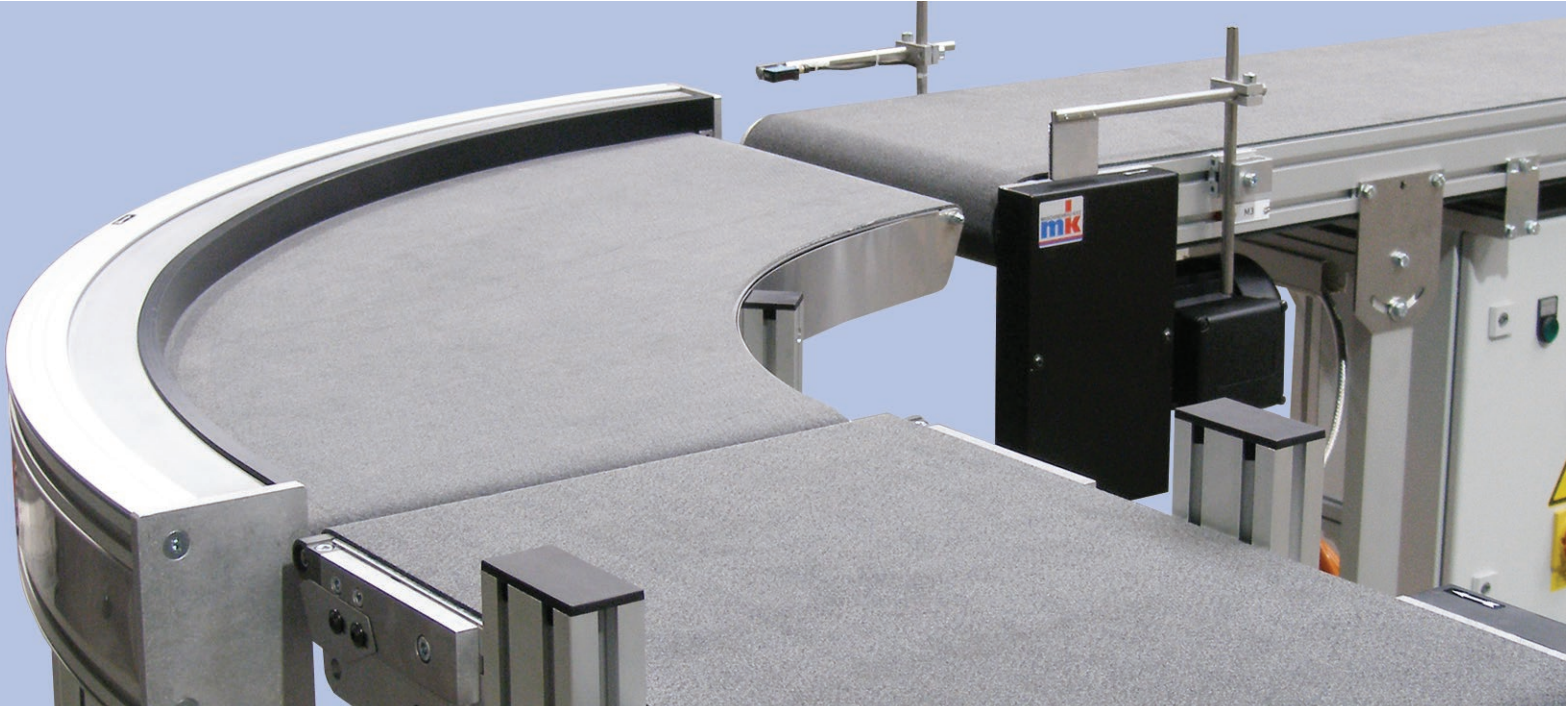
CAD360!

Quickly and Easily Configure and Download CAD Models

- ✓ A wide range of conveyor platforms are available
- ✓ Customize conveyor lengths and widths, drive locations, stand type and side rails
- ✓ Update the conveyor model instantly
- ✓ A wide variety of download options including: 3D DWF, STP, 2D DWG, JPG and PDF files
- ✓ Usable on any device connected to the internet

www.mkcad360.com

Belt Conveyors



Belt Conveyors are a versatile staple in many assembly and manufacturing facilities. mk North America offers three different size straight belt conveyors, as well as a curve belt conveyor, incline and dual-lane belt conveyors.

mk's aluminum frame belt conveyors are constructed out of durable, high-quality, t-slotted aluminum extrusion which allows for easy mounting of accessories. All mk belt conveyors feature a wide selection of drives, idlers, stands, side rails and countless accessories.

Applications

- Assembly
- Original Equipment Manufacturers (OEM)
- System integration
- Part accumulation
- Small part handling
- Testing and inspection lines
- Elevation change applications
- Injection molding
- Metal stamping industries
- Packaging
- Printing, labeling, scanning and marking

Features and Benefits

- Fast delivery available
- Quick belt change
- Strong, ladder frame construction
- End and mid-drive models available
- Nose bar transfers as small as 10 mm diameter
- Maintenance free, sealed, high quality bearings
- Cleats and flights possible on many models
- Crowned pulleys for optimal belt tracking and long belt life

GUF-P MINI



The GUF-P MINI conveyor features a low 35 mm frame height, ideal for small parts handling or slug removal. Available in three standard widths with a variety of drive and tail options.

- Frame:** 35 mm deep structural aluminum profile
- Width:** 75, 100, and 150 mm
- Lengths:** Up to 5,000 mm
- Loads:** Up to 100 lbs.
- Speeds:** Up to 200 fpm

GUF-P 2000



The GUF-P 2000 is our most popular and most versatile conveyor. It features more drive, idler and belt options than any of our other conveyor models.

- Frame:** 50 mm deep structural aluminum profile
- Width:** 50 to 300 mm (in 50 mm increments)
400 to 800 mm (in 100 mm increments)
- Lengths:** Up to 10,000 mm
- Loads:** Up to 300 lbs.
- Speeds:** Up to 500 fpm

GUF-P 2041



The GUF-P 2041 series conveyors are manufactured using our structural 40 x 80 mm profile. The result is a modular, heavy-duty frame with dual t-slots, ideal for wide conveyors and heavy loads.

- Frame:** 80 mm deep structural aluminum profile
- Width:** 200 to 1,200 mm (in 100 mm increments)
- Lengths:** Up to 10,000 mm
- Loads:** Up to 500 lbs.
- Speeds:** Up to 500 fpm

KGF-P 2040



Belt curve conveyor system KGF-P 2040 comes in a variety of angles and widths. The system features a 20 mm rolling nose bar which allows for the transfer of small parts.

- Frame:** Constructed out of multiple 40 mm deep profiles
- Width:** 300, 400, 500 and 600 mm
- Radii Angle:** 45°, 60°, 90° and 180°
- Loads:** Up to 75 lbs.
- Speeds:** Up to 75 fpm

KFG-P 2000



The KFG-P 2000 is designed to move products between various elevations. This conveyor can be configured with horizontals at the infeed, discharge or both ends.

Frame: 50 mm deep structural aluminum profile

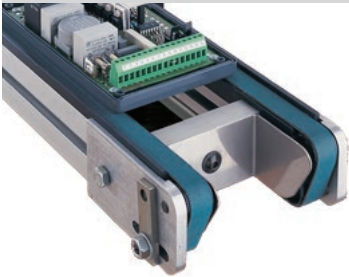
Width: 300 to 700 mm (in 100 mm increments)

Lengths: Up to 4,000 mm

Loads: Up to 150 lbs.

Speeds: Up to 75 fpm

DGF-P 2001



The DGF-P 2001 is a dual belt conveyor designed specifically for edge handling small pallets. This conveyor is ideal for compact spaces and applications.

Frame: 50 mm deep

Width: Pallet size plus 11 mm

Lengths: Up to 2,000 mm

Loads: Up to 50 lbs.

Speeds: Up to 75 fpm



Conveyors from mk North America, like these GUF-P 2000 belt conveyors, can easily be modified to include a variety of accessories, such as these guards.



KFG-P 2000 incline to horizontal conveyor feeds product over and onto the conveyor below, which then carries the product downstream.

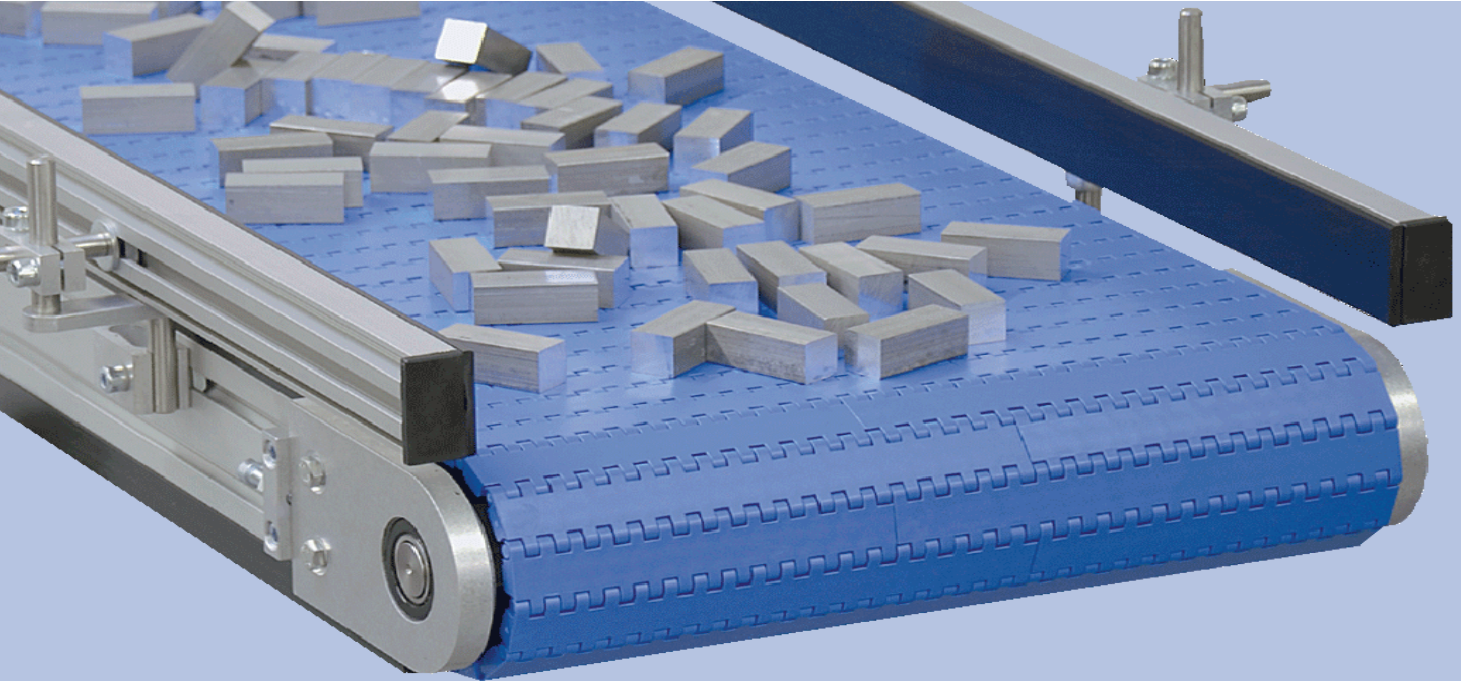


GUF-P 2000 belt conveyors have many idler options including a 19 mm rolling nose bar as shown here.



Here a GUF-P MINI conveyor with a center drive is customized with side rails unique for the application.

Modular Plastic Belt Conveyors



mk North America's modular plastic belt conveyors come in a variety of platforms and configurations. What distinguishes these from traditional belt conveyors is their high load capacities, even at narrow belt widths. The modular plastic belt is positively driven, which reduces tracking difficulties.

Because the plastic belt is built in interlocking segments, it is possible to replace a damaged portion of belting, without replacing the entire conveyor belt, thus resulting in cost savings. The modular plastic belt is also resistant to wear and is low-friction, making it ideal for those applications involving high temperatures or caustic chemicals. This conveyor's high load capacity also makes it useful for heavy material handling, as in automotive or general manufacturing applications.

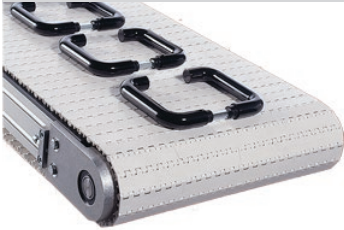
Applications

- Assembly
- Original Equipment Manufacturers (OEM)
- System integration
- Part accumulation
- Cooling and curing lines
- Testing and inspection lines
- Metal stamping industries
- Sorting lines
- Automotive industry

Features and Benefits

- Rapid belt change and the flexibility to replace only portions of the belt
- A wide variety of belting choices offered in various plastics and configurations
- Strong, ladder frame construction
- Nose bar transfers possible
- Positively driven
- Maintenance free, sealed, high quality bearings
- Cleats and flights available

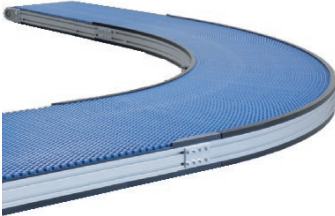
MBF-P 2040



The MBF-P 2040 conveyor is a rugged and durable modular plastic belt conveyor. This conveyor is ideal for high loads and wide widths.

- Frame:** 80 mm deep structural aluminum profile
- Width:** Up to 3,000 mm
- Lengths:** Up to 10,000 mm
- Loads:** Up to 1,000 lbs.
- Speeds:** Up to 200 fpm

KMF-P 2040



The KMF-P 2040 comes in a variety of widths and can handle multiple curves with a single drive. The frame is only 30 mm wider than the belt, making this conveyor highly compact.

- Frame:** 80 mm deep structural aluminum profile
- Width:** 164 mm to 1,005 mm
- Loads:** Up to 330 lbs.
- Speeds:** Up to 100 fpm

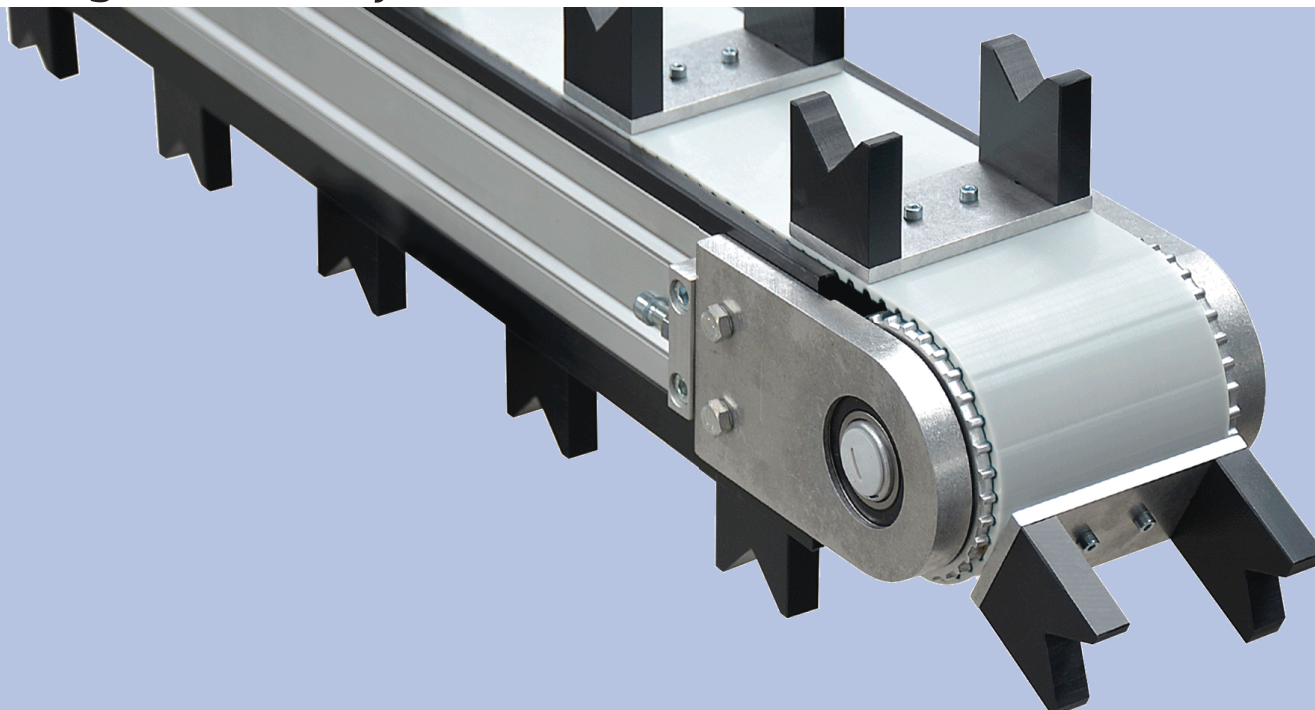
KFM-P 2040



The KFM-P 2040 conveyor system, with its compact conveyor frame structure, is well suited for integration into existing machines and moving product between elevations.

- Frame:** 80 mm deep structural aluminum profile
- Width:** 200 to 1,000 mm
- Lengths:** Up to 4,000 mm
- Loads:** Up to 300 lbs.
- Speeds:** Up to 100 fpm

Timing Belt Conveyors



Timing belt conveyors are the ideal choice in indexing applications and those requiring precise product location. The modular frame construction of mk North America's timing belt conveyors allows for easy additions and expansion to the line, plus the limitless ability to mount accessories to the frame.

These conveyors come in two main types: with (ZRF-P 2040), or without (ZRF-P 2010) the ability to attach cleats to the belt. The ZRF-P 2010 is ideal for pallet handling and positioning of workpieces. A variety of different belt surfaces adds to the flexibility of mk timing belt conveyors.

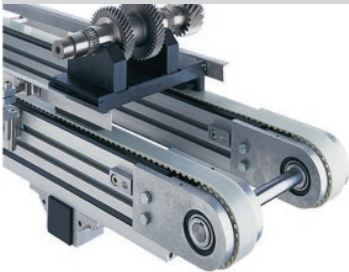
Applications

- General manufacturing
- Original Equipment Manufacturers (OEM)
- System integration
- Precision movement
- Fixtured applications
- Workpiece positioning
- Automotive industry

Features and Benefits

- Precise indexing
- Positively driven
- Maintenance free, sealed, high quality bearings
- Wide variety of options
- Single and multi-strand configurations
- Cleats, fixtures and attachments possible

ZRF-P 2010



Timing belt conveyor ZRF-P 2010 is ideal for indexing applications and for the design of pallet handling systems. A wide variety of accessories make this a very versatile conveyor.

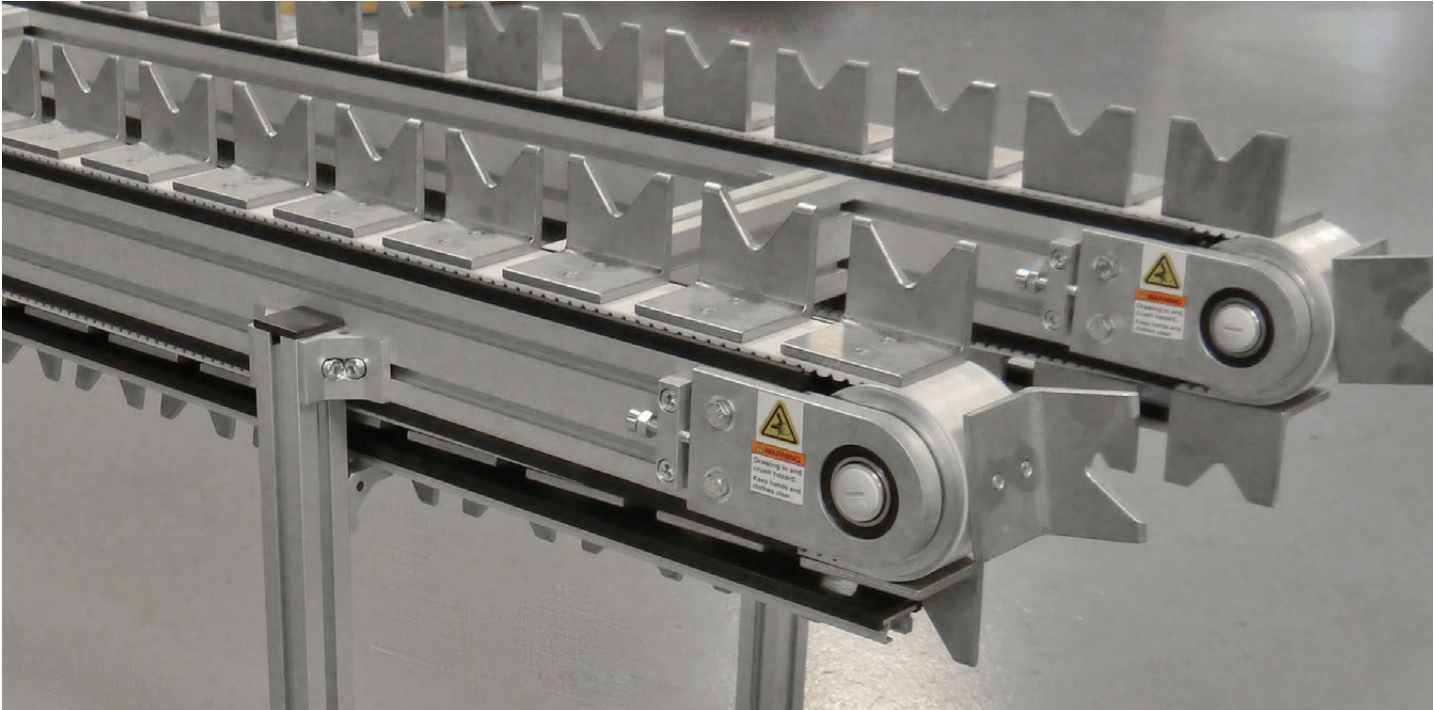
- Frame:** 100 mm deep structural aluminum profile
- Width:** A single lane 50 mm wide, or set up as multiple lanes
- Lengths:** Up to 10,000 mm
- Loads:** Up to 800 lbs.
- Speeds:** Up to 200 fpm

ZRF-P 2040



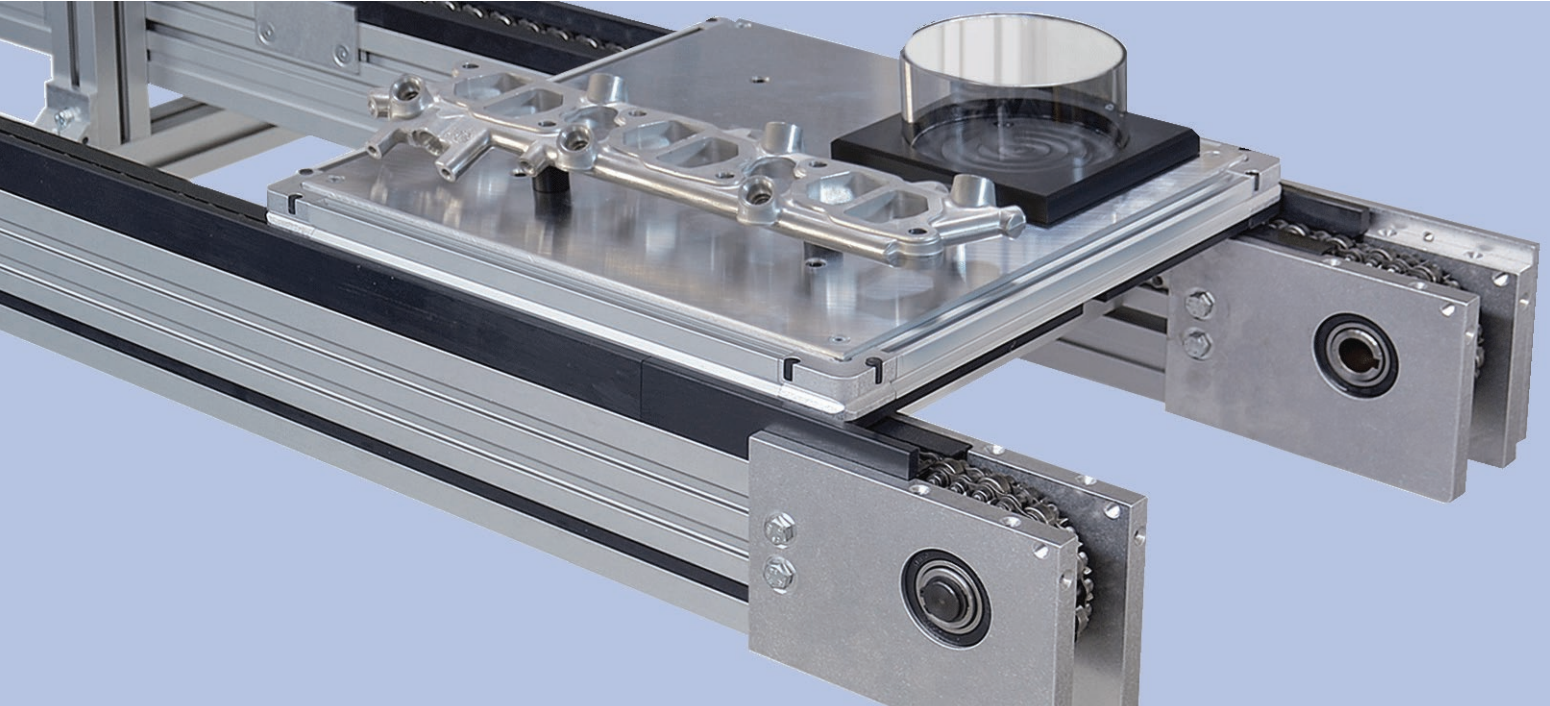
The ZRF-P 2040 timing belt conveyor is unique in its design as it allows for timing belts with either welded or bolted attachments.

- Frame:** 80 mm deep structural aluminum profile
- Width:** 40, 80 and 120 mm
- Lengths:** Up to 10,000 mm
- Loads:** Up to 1,500 lbs.
- Speeds:** Up to 200 fpm



A wide variety of attachments are available for use with mk timing belt conveyors, including ones specifically designed for customer applications.

Chain Conveyors



mk North America's chain conveyors are the go-to conveyors for all of your pallet handling needs. mk offers the most extensive line of chain conveyors in the industry; with various types of accumulating roller chain to standard roller chain in single or duplex strands, as well as attachment chain conveyors. Chain conveyors can be used in a single strand fashion or have dual strands for pallet handling, or three or more strands for very wide parts.

The TKU 2040 is an attachment chain conveyor. It is designed to have pallets or fixtures mounted directly to the chain. Additionally, the TKU has the option to be adjustable width (with the driven lane fixed in position).

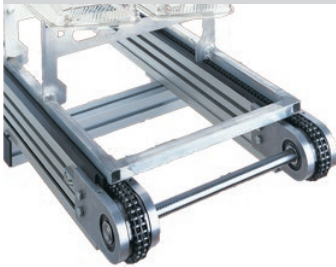
Applications

- Pallet handling
- Accumulation and storage
- Sharp parts
- Fixtured applications
- Workpiece positioning
- Automotive industry

Features and Benefits

- Positively driven
- Maintenance free, sealed, high quality bearings
- Wide variety of chain options

KTF-P 2010



The KTF-P 2010 low profile chain conveyor serves as the basic system component for the manufacture of single, dual, or triple-strand material handling systems.

- Frame:** 100 mm deep structural aluminum profile
- Width:** A single lane 50 mm wide, or set up as multiple lanes
- Lengths:** Up to 15,000 mm
- Loads:** Up to 2,200 lbs.
- Speeds:** Up to 200 fpm

SRF-P 2010



Low backpressure accumulating roller chain conveyor, SRF-P 2010, is designed for medium-duty pallet handling systems.

- Frame:** 100 mm deep structural aluminum profile
- Width:** A single lane 50 mm wide, or set up as multiple lanes
- Lengths:** Up to 20,000 mm
- Loads:** Up to 2,000 lbs.
- Speeds:** Up to 200 fpm

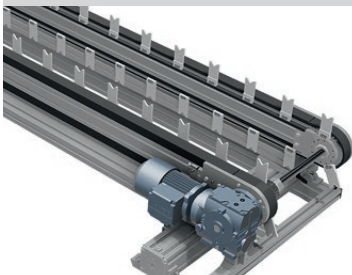
SRF-P 2012



The SRF-P 2012 is a low backpressure accumulating roller chain conveyor designed for the construction of heavy-duty pallet handling systems.

- Frame:** 120 mm deep structural aluminum profile
- Width:** A single lane 50 mm wide, or set up as multiple lanes
- Lengths:** Up to 20,000 mm
- Loads:** Up to 3,500 lbs.
- Speeds:** Up to 200 fpm

TKU 2040



The TKU 2040 is an adjustable width (optional) indexing chain conveyor. It can be designed to accommodate pallets or v-blocks.

- Frame:** 80 mm deep structural aluminum profile
- Width:** Dual strand design, each lane is 40 mm wide
- Lengths:** Up to 8,000 mm
- Loads:** Up to 1,000 lbs.
- Speeds:** Up to 60 fpm

Table Top Chain Conveyors

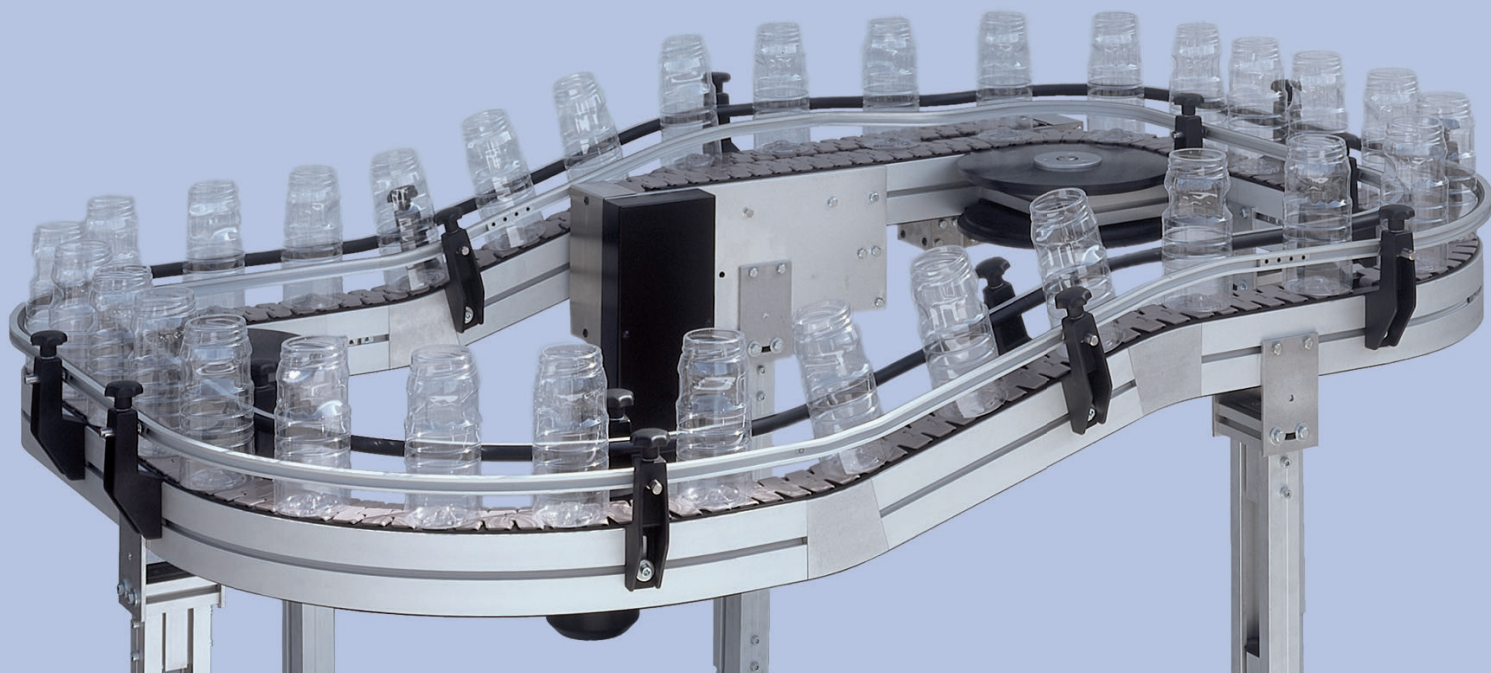


Table top chain conveyors, also called flat top chain conveyors, are used in a wide variety of applications and across many industries. mk offers a light duty (SBF-P 2254) and a heavy duty (SBF-P 2000) flat top chain conveyor in order to meet the needs across all of these industries. Furthermore, mk also offers a carousel style table top chain conveyor (SRT-P 2005) for carrying parts in a continuous loop. The SPU 2040 is an over-under style pallet-handing conveyor, capable of accumulating, singulating and positioning pallets.

mk North America offers a wide variety of modules from curves to incline units, as well as an assortment of chain materials and types. Whatever your needs, our table top chain conveyors are second to none.

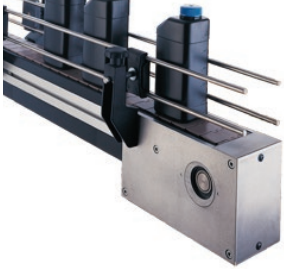
Applications

- General manufacturing
- Original Equipment Manufacturers (OEM)
- System integration
- Part accumulation and storage
- Metal stamping industries
- Sorting lines
- Bottling
- Automotive industry
- Pallet handling

Features and Benefits

- Designed around industry standard flat top chain widths
- Maintenance free, sealed, high quality bearings
- Modular design allows for future line changes
- Steel and plastic chains available

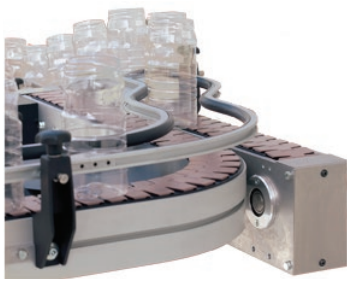
SBF-P 2000



The SBF-P 2000 is designed to operate in the most taxing of environments and to carry a wide variety of products. It can be configured as a single straight run or with a variety of curves.

- Frame:** 50 mm deep, heavy duty structural profile
- Width:** For chain widths: 3.25", 4.5", 6", 7.5", 10" and 12"
- Lengths:** Up to 10,000 mm
- Speeds:** Up to 200 fpm
- Curves:** 90° and 180°, radii from 200 mm to 600 mm

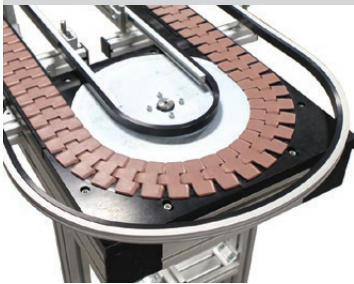
SBF-P 2254



The SBF-P 2254 is a flexible chain conveyor ideal for transporting smaller, lighter products between work cells. Designed for straight runs or with a variety of curves. Inclines are also possible.

- Frame:** 95 mm, with a single t-slot
- Width:** For chain widths: 3.25" and 4.5"
- Lengths:** Up to 10,000 mm
- Speeds:** Up to 200 fpm
- Curves:** 90° and 180°, radii from 200 mm to 600 mm

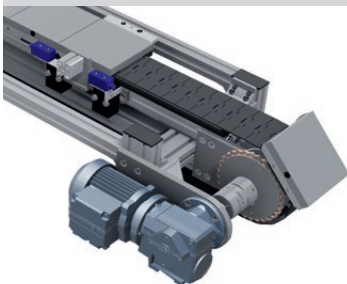
SRT-P 2005



The SRT-P 2005 recirculating flat top chain conveyor is designed to act in a "carousel" fashion – the chain completely circulates along the top surface of the conveyor.

- Frame:** 100 mm deep, heavy duty structural profile
- Width:** For chain widths: 3.25"; however larger pallets can be accommodated
- Speeds:** Up to 30 fpm
- Configurations:** Continuous loop and L-shapes

SPU 2040



The SPU 2040 is a recirculating pallet system that allows for the pallets to be accumulated, indexed, stopped as well as positively located.

- Frame:** Constructed using mk 40 system profile, in a heavy duty box-frame construction
- Width:** For pallets 160 mm to 350 mm wide
- Lengths:** Up to 10,000 mm
- Loads:** Up to 600 lbs.
- Speeds:** Up to 50 fpm

Roller Conveyors



mk North America offers a wide variety of roller conveyors including gravity and driven system options. With the various frame and drive designs which also including powered rollers and driven rollers. mk roller conveyors can be modified and used as pallet handling lines as well.

All roller conveyors from mk can be supplied in straight running and curved sections.

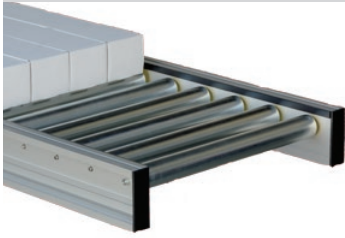
Applications

- General manufacturing
- Parts queuing
- Packaging
- Transfers
- Sorting
- Assembly

Features and Benefits

- Efficient transfer system for high loads
- Flexible roller placement
- Wide variety of roller sizes and materials
- Customizable length and width options
- Gravity, driven and powered roller options

RBS-P 2065/2066/2255



RBS-P series conveyors from mk are gravity roller style. They are available in three different frame depth options and feature customizable roller types, sizes and spacing. Curves and straight sections are possible.

Frame: RBS-P 2065: 75 mm deep, single t-slot

RBS-P 2066: 100 mm deep, dual t-slot

RBS-P 2255: 120 mm deep, dual t-slot

Lengths: Up to 10,000 mm

RBT-P 2255



Chain driven roller conveyors, such as the RBT-P 2255, allow application possibilities such as separation of products, product accumulation, stopping and storage. This unit is powered using an external motor. Curves and straight sections are possible.

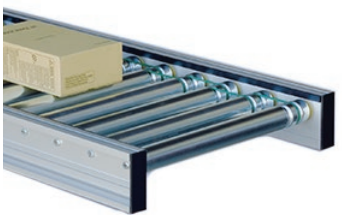
Frame: 120 mm deep, t-slots top and bottom

Width: Starting at 420 mm and up

Lengths: Up to 10,000 mm

Speeds: Up to 100 fpm

RBM-P 2255



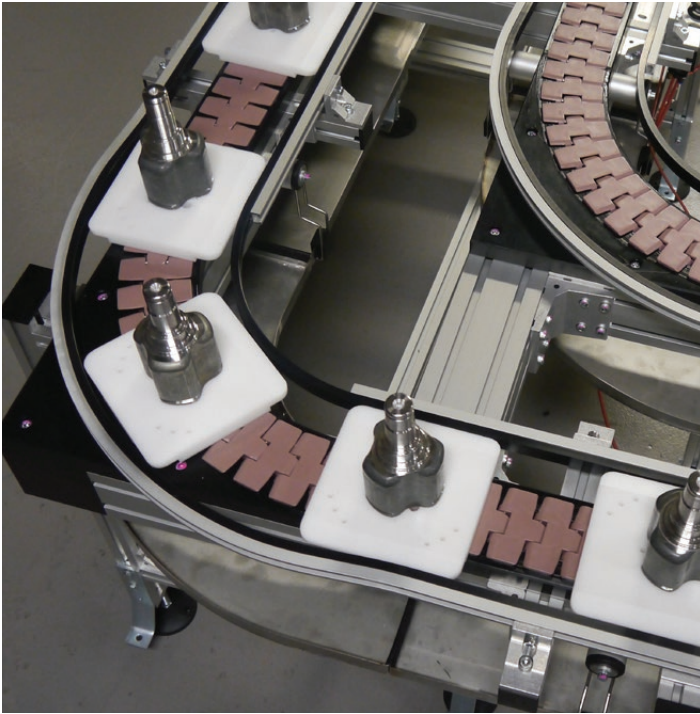
The RBM-P 2255 is a zero pressure, v-belt driven live-roller conveyor for zoned applications. These powered roller conveyors are also excellent for small tight spaces and short lengths.

Frame: 120 mm deep, t-slots top and bottom

Width: Starting at 420 mm and up

Lengths: Up to 10,000 mm

Speeds: Dependent on load



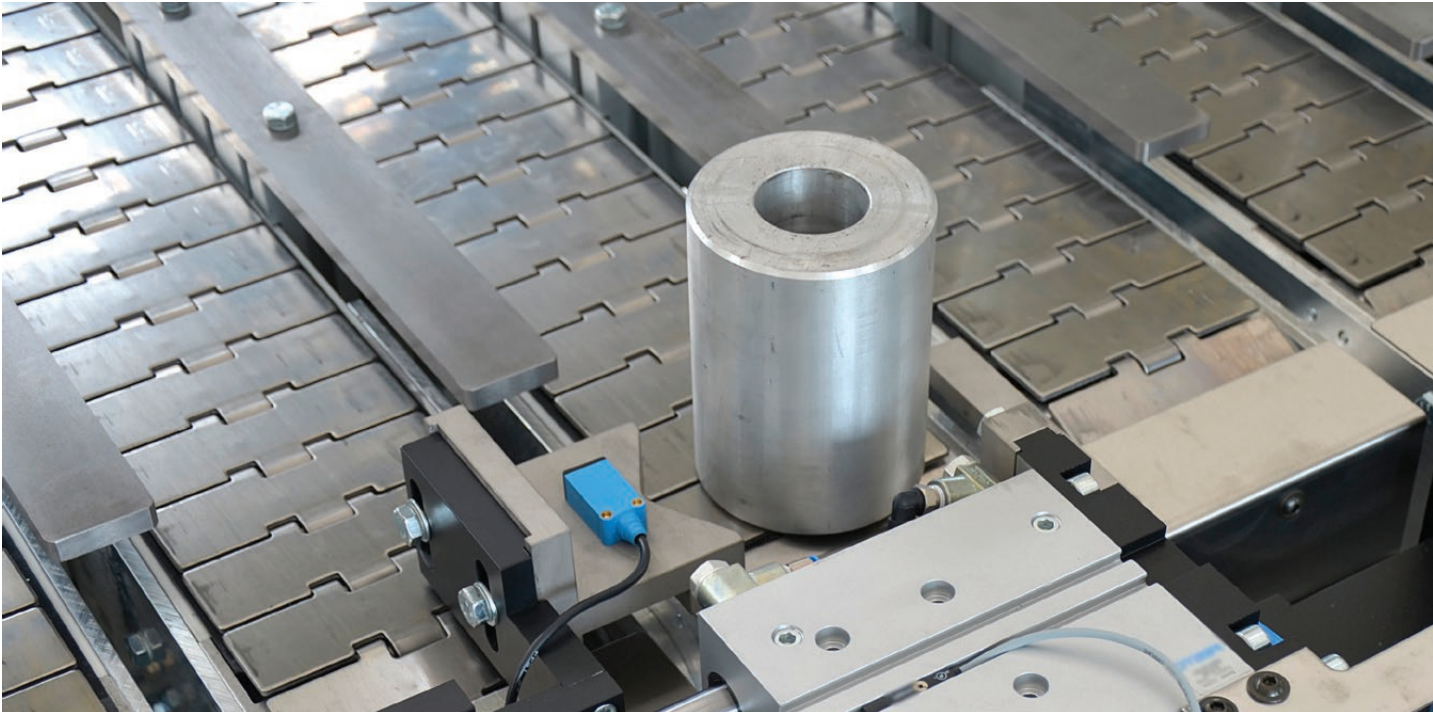
The SRT-P 2005 recirculating conveyor is ideal for carrying small pallets between work cells and processes.



KMF-P 2040 plastic modular belt conveyors can be configured in a variety of ways and can include single or multiple curves.



Roller conveyors are ideal for transporting oversized parts. ZRF-P 2010 timing belt conveyors are used to transfer parts between roller conveyors.



Many conveyors can be arranged to carry multiple rows of parts at a time, such as these SBF-P 2000 table top chain conveyors.



KFM-P 2040 plastic modular belt conveyors are ideal for inline conveying. These conveyors can be configured with horizontals on the bottom and top.



Timing belt conveyors, like this ZRF-P 2010, are ideal for indexing, but they can also be used to accumulate parts as well.

Conveyor Engineered Solutions



mk has the largest offering of standard conveyors on the market, allowing us to provide the most comprehensive selection of custom engineered conveying solutions in the industry. From modified standard designs to truly one-of-a-kind custom conveyors, mk has the solution for you.

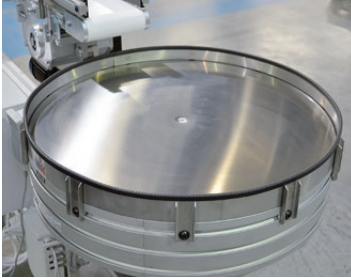
Applications

- Accumulation & Storage
- Indexing
- Part orientation & Positioning
- Special environment
- Specialty belting
- Vision & Inspection
- Customs

Features and Benefits

- Highly customizable
- Specifically designed to meet unique demands
- Fully built and tested prior to shipping
- Designed using standard mk conveyors for cost effective solutions
- Full engineering support before, during and after the sale

Accumulation & Storage



Accumulation and storage conveyors allow you to better manage your production.

- Turntables
- Low pressure accumulation
- Recirculating conveyors
- Vertical storage units
- Zone driven accumulation

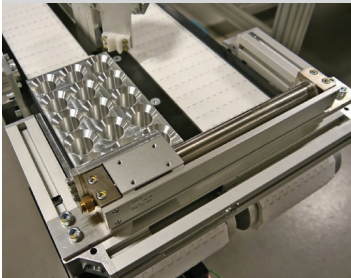
Indexing



Indexing solutions allow for accurate, precise and measured movements of the product.

- Attachment chain conveyors
- Attachment timing belt conveyors
- Indexing motor and controls including servo and steppers
- A variety of accessories including sensors and encoders

Parts Orientation & Positioning



mk offers a wide variety of parts orienting accessories such as end stops, nests and product fixtures.

- Adjustable width conveyors
- Magnetic conveyors
- Rotating conveyors
- Side gripper conveyors
- Vacuum conveyors

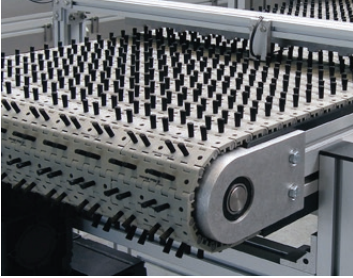
Special Environment



Looking to install a conveyor in a particular environment? Then look no further than mk.

- Abrasive applications
- Caustic cleaning or environments
- Cleanroom
- Explosion proof
- Temperature hot-cold
- Washdown

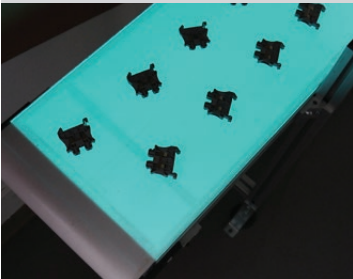
Specialty Belting



Specialty belting can make an ordinary conveyor extraordinary and capable of meeting demanding requirements.

- Anti-static and highly conductive belting
- Extreme temperature belting
- Narrow width belts
- Stainless steel belts
- Roller top belting
- Woven wire belting

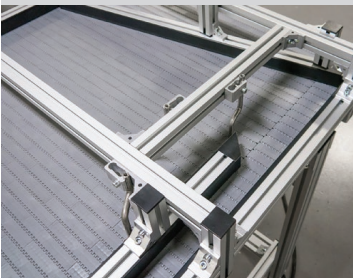
Vision & Inspection



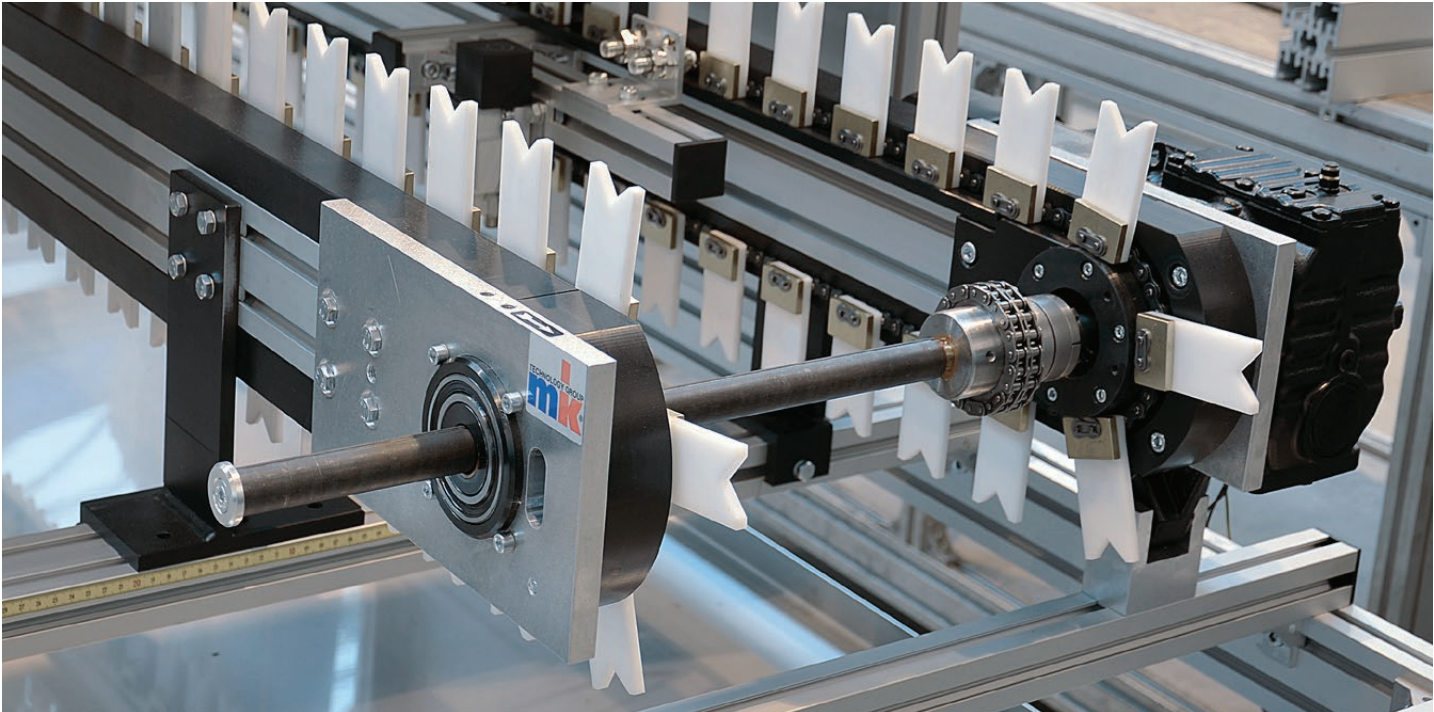
mk offers a wide variety of conveyors to aid in the vision and inspection of various products.

- Back-lit conveyors
- Metal detector conveyors
- Hugger style conveyors

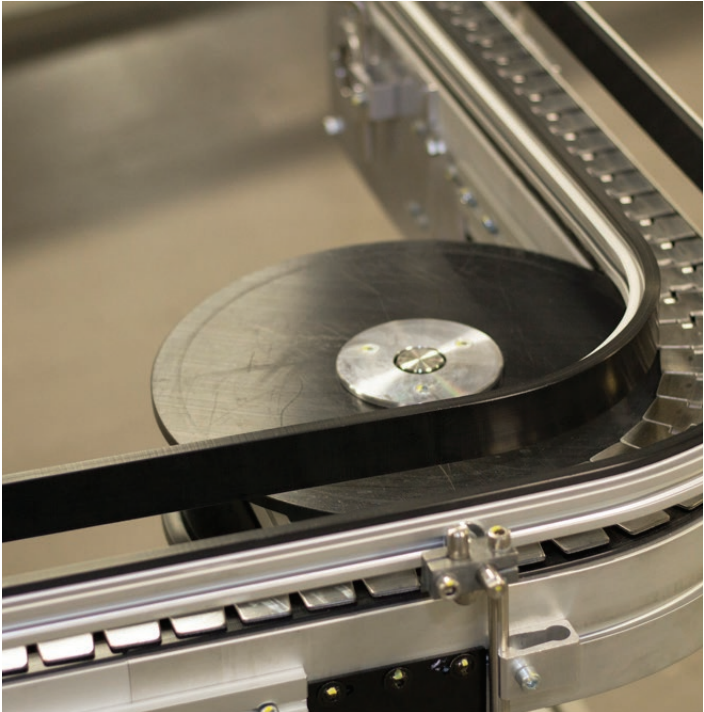
Customs



mk North America provides the broadest offering of conveyor types in the industry; but we recognize that unique and specialized solutions are often required. mk will work with you to develop a solution to meet your specific needs.



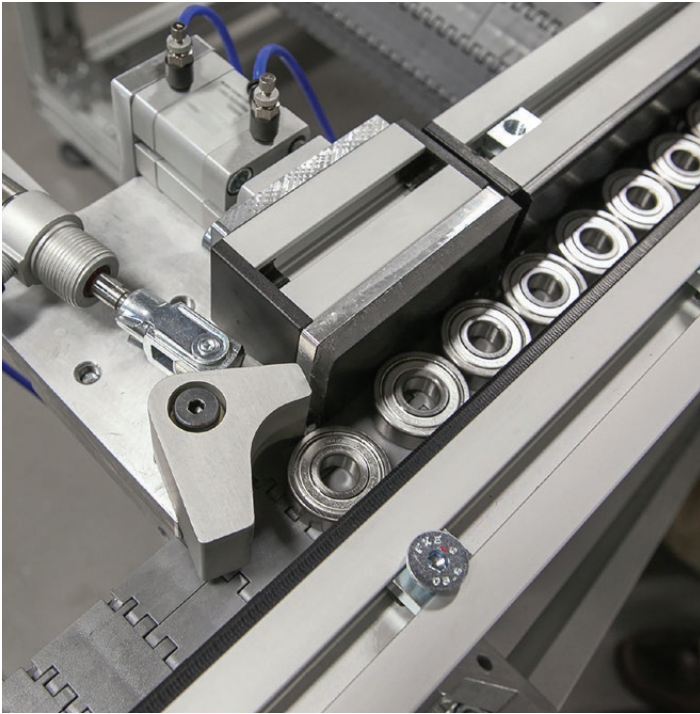
TKU 2040 conveyors are designed to carry a wide variety of products, and with an adjustable width feature their versatility is unlimited.



Rolling curves are typically used on flat top chain conveyors to reduce friction in the bend and allow for longer conveyor lengths.



Conveyors can be positioned so that they run on their edges. This can be extremely useful when it is necessary to carry products by their sides.



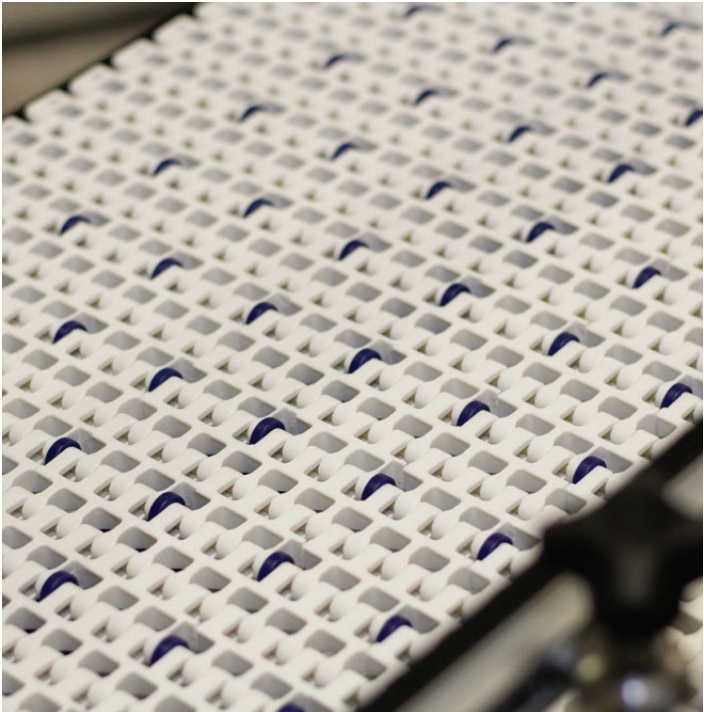
Parts can be metered off of a conveyor line using a pneumatic escapement. The plastic modular belt conveyor allows for significant accumulation.



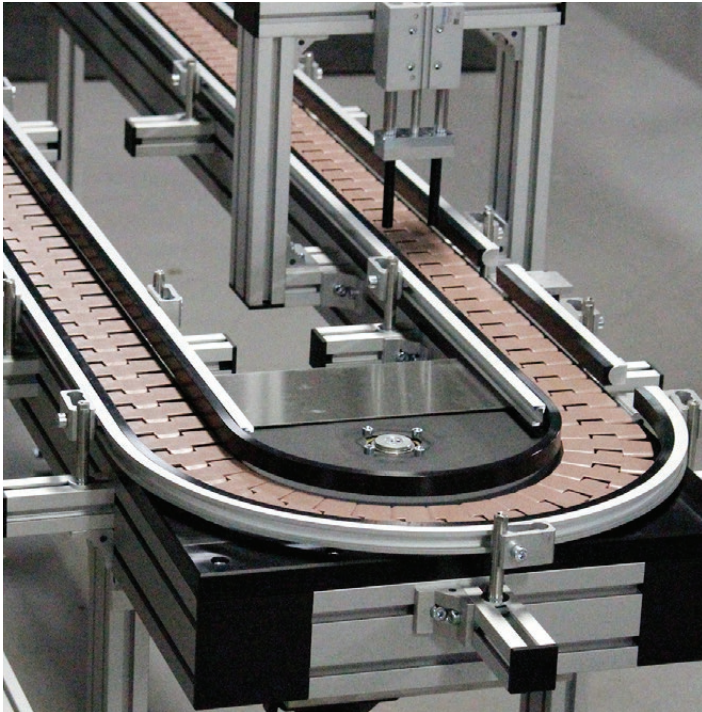
In this example of an engineered solution; a magnetic conveyor carries a metal part on the underside of the belt, up an incline.



A wide variety of conveyors can be used to accumulate and store parts, including belt conveyors as shown here.



Plastic modular belts come in a variety of styles, such as this example with blue accumulation rollers.

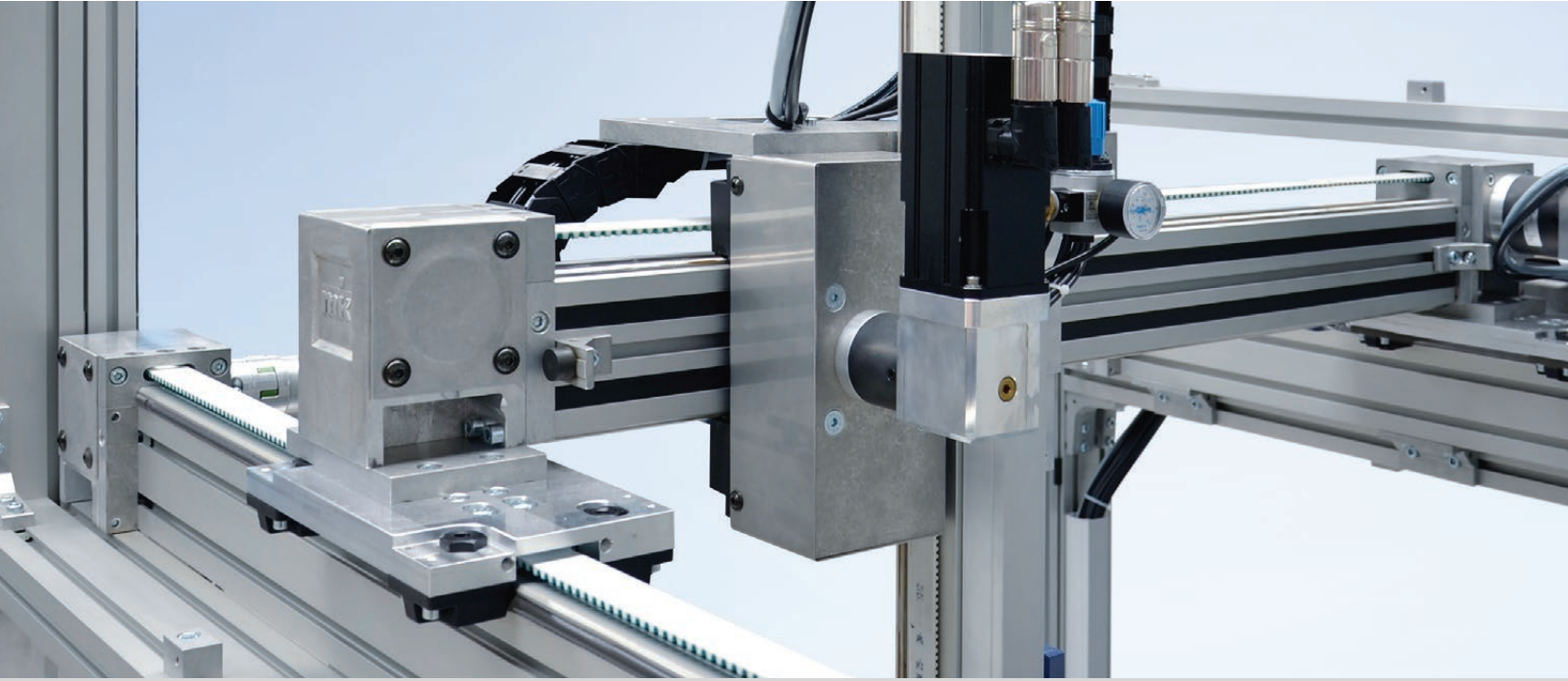


SRT-P 2005 conveyors can be equipped with pneumatic stop and locating devices.



mk North America is able to offer many ways to customized a conveyor, such as shown with the side rails on this belt conveyor.

Linear Motion



mk offers a comprehensive line of precision linear motion products for demanding manufacturing applications. All mk linear motion products are available in standard or custom configurations, ranging from simple manual positioning units to complex multi-axis gantries used in high-speed automation.

All mk linear motion products are modular and fully compatible with mk's aluminum framing system. The "add-on" principle allows for easy integration of our linear modules into existing framework, resulting in significant savings in materials and labor.

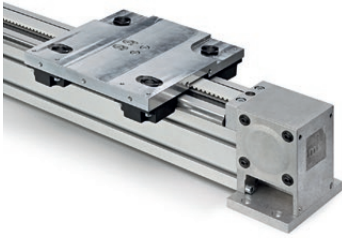
Applications

- Printer head and dispensing
- Pharmaceuticals and biomedicine
- Adjustable width conveyors
- Rapid rail adjustment
- Side-gripping conveyor supports and adjustment

Features and Benefits

- The wide range of guides are designed to meet the customer's requirements
- Compatible with mk profile series to save materials, costs and space
- Uncomplicated and rapid setup of linear positioning modules based on the "add-on" principle
- Highly reliable operation; modules are built with the highest quality materials
- mk engineers provide expert advice and assistance in designing your system

LZR



The mk LZR, timing belt driven linear module, offers high speed, high acceleration, and a long travel distance, in addition to rigid construction characteristics. They are ideally suited to operate as a single-axis product or as a component for multi-axis gantries.

Sizes: 50x50 mm, 50x100 mm and 100x100 mm profile cross sections

Carriages: 150 mm, 250 mm and 450 mm long

Carriage Mounting: Top or side mounted

F_{Allowable}: Up to 4,000 N

VST

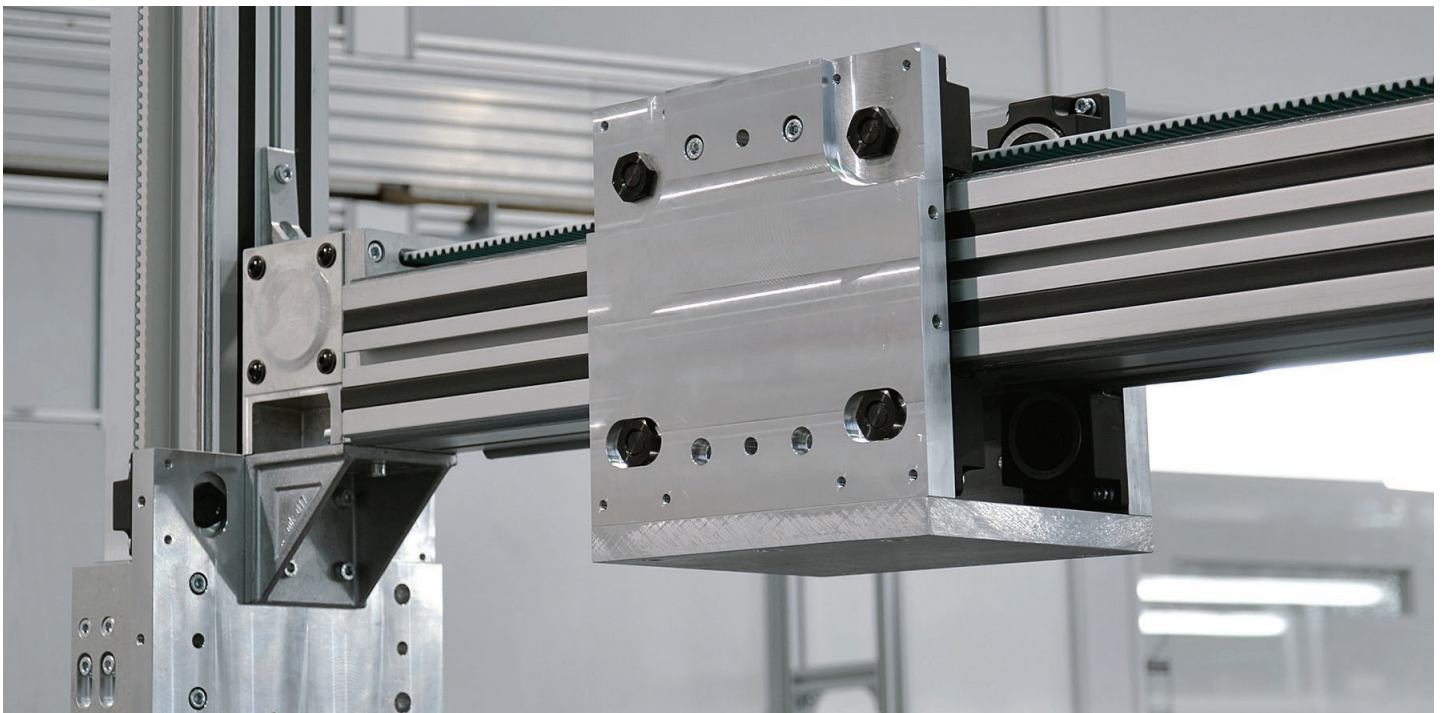


mk linear positioning module, VST, is designed for adjustment and positioning tasks. Typical applications include measuring, labeling, scanning, printing and marking. The structural profile features a high-quality surface coating that provides a low-friction travel surface for the carriage. A stainless steel cover strip protects the trapezoidal spindle from contaminants, making the VST virtually maintenance-free.

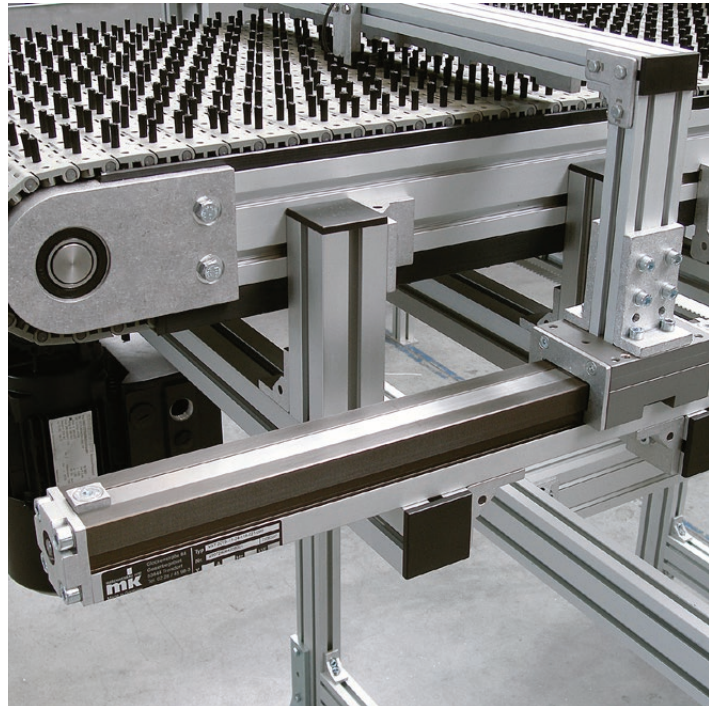
Sizes: 50x50 mm and 100x100 mm profile cross sections

Designs: Single carriage, Dual carriages opposing direction, Dual carriages same direction

Display Options: No display, With scale, With digital display

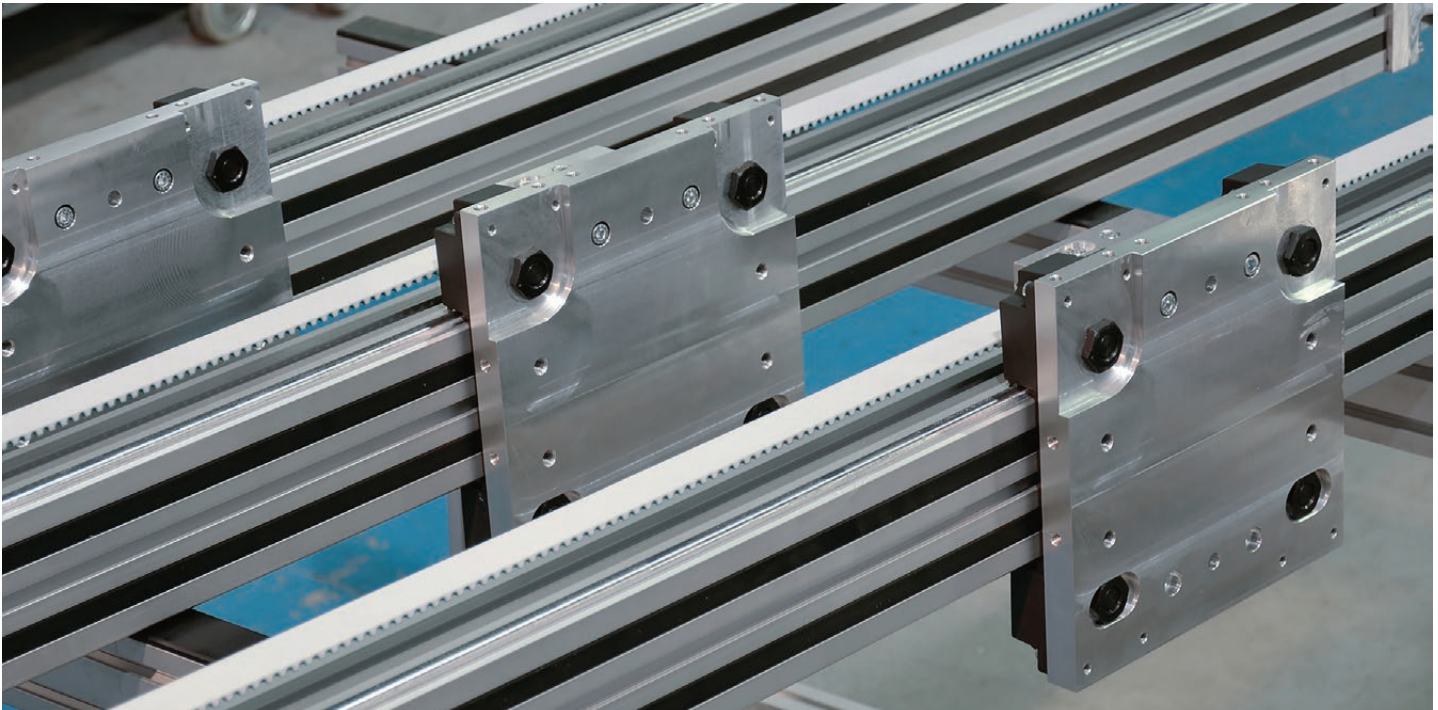


A custom LZR 2005 configuration with a vertical unit, as well as a horizontal unit. Both models feature custom carriages.

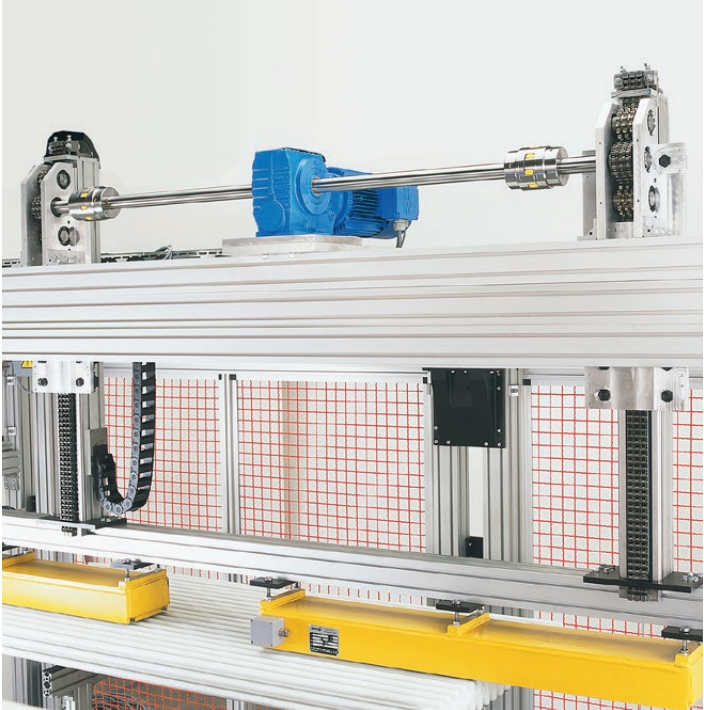


Two VST units are mounted together on a common frame. Additionally the horizontal LZR is also pneumatically actuated.

In this example a VST is mounted to the side of the conveyor allowing for tooling to effortlessly be moved across the surface of the conveyor belt.



Here, three LZR timing belt driven linear modules are show. All of these units have side mounted carriages.



Dual custom chain driven linear modules, are shown here, they are designed to move the horizontal bar vertically.



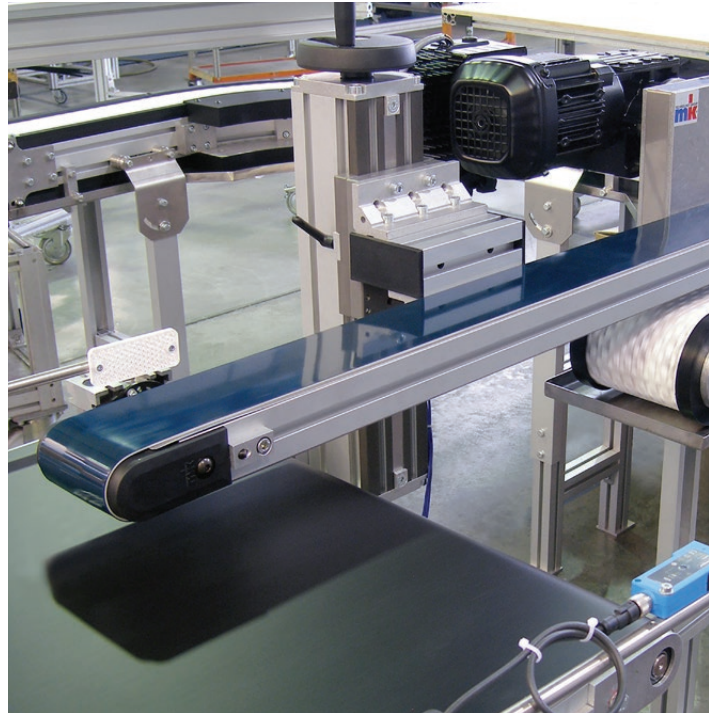
In this example a VST is used to adjust the lane width on an SPU 2040 attachment chain conveyor.



As seen in this example, LZRs are typically used with conveyors to create vertical transfer units, also known as elevators.



An example of a gantry using an LZR 2005 with a side-carriage and VST 2011 as the Z-axis.



A VST 2011 is used to position a belt conveyor above two other conveyors in a line.



A dual-axis linear module comprised of an LZR 2011 with a side-mounted carriage plate.

Our Other Products

VersaMove Pallet-Handling Conveyor Systems



mk North America manufactures pallet conveyors over three different platforms. This allows for the pallet-handling system to be tailored to meet your specific needs. mk believes in offering not only a better product, but also a better solution. VersaMove pallet-handling conveyors are pre-engineered and modular. The system can be easily expanded or reconfigured as your manufacturing needs change. Our workpiece pallet conveyors can be used in a variety of layouts, or combined for even greater flexibility in planning production processes.



CleanMove Stainless Steel Conveyors



CleanMove is a full line of sanitary stainless steel conveyors designed for the specific needs of the food and pharmaceutical industries. CleanMove stainless steel conveyors provide state-of-the-art cleanability, performance, reliability and are designed to meet food and pharmaceutical industry standards. With three different conveyor system platforms and so many recommended applications, CleanMove makes it easy to meet industry and specific government compliance standards.



Extruded Aluminum Framing

mk Aluminum Framing Systems feature over 200 different profile shapes and more than 2,700 connectors and system components, all engineered for a precise fit and maximum rigidity. Forget the hassles and inflexibility of steel — the welding, grinding, painting and waiting. mk offers you fast assembly, easy reconfiguration and unlimited flexibility.

With mk Aluminum Framing you can build just about anything you can imagine. Whether it be machine bases, safety enclosures, perimeter guards, tool racks, robot stands, carts, workstations, display units or something else, with mk's aluminum framing the possibilities are nearly limitless.



View all of our products and request a quote at www.mknorthamerica.com



mk North America, Inc.
an mk Technology Group Company

105-125 Highland Park Drive
Bloomfield, CT 06002, USA

Phone: 860.769.5500

Fax: 860.769.5505

www.mknorthamerica.com

sales@mknorthamerica.com