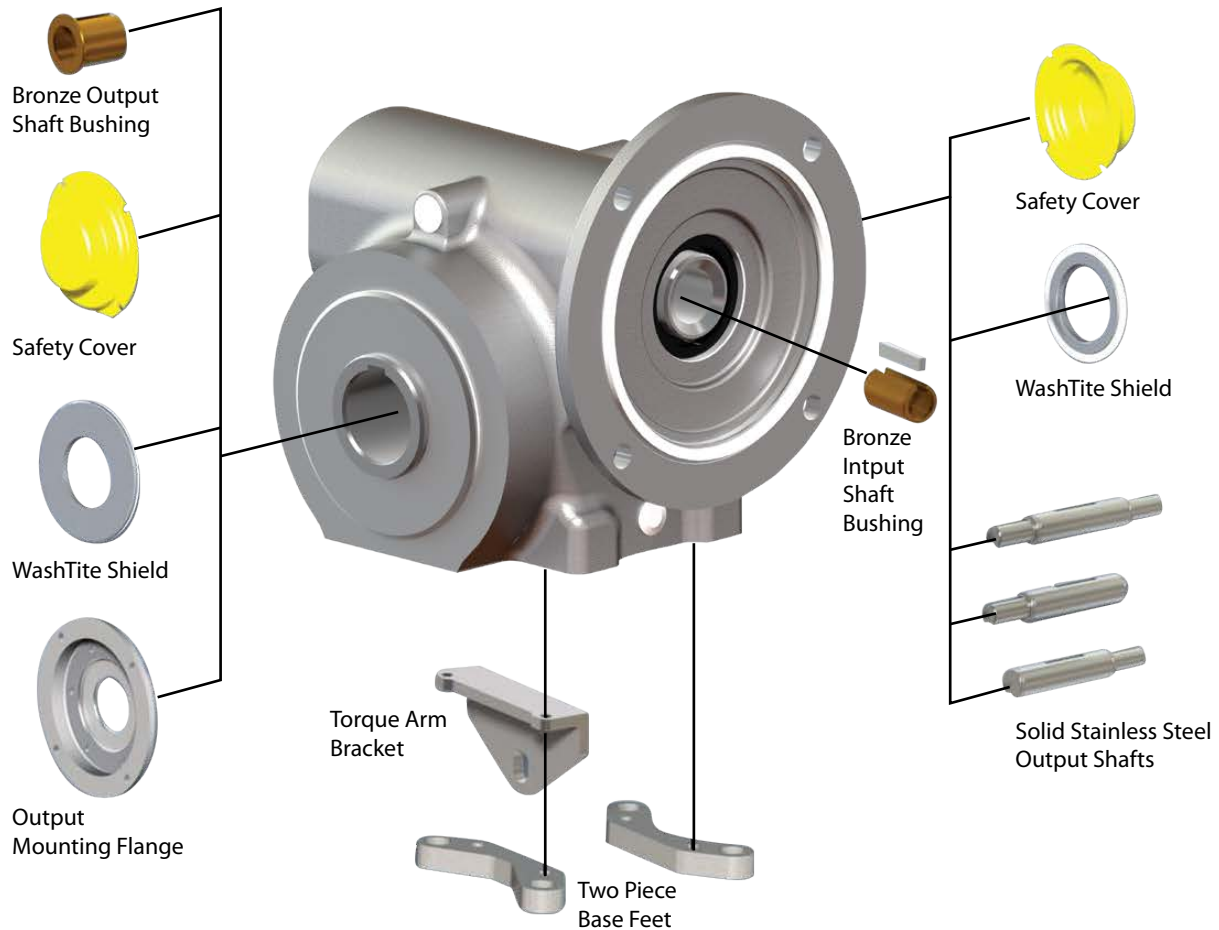


Stainless Conveyor Drive

# UNIQUE, POWERFUL PERFORMANCE



## 24 Hour Ship Program

- Over 15,000 configurations available in 5 case sizes, 9 gearing ratios
- Reduces downtime and minimizes inventory

## IP69K Certified

- WashTite Shields improve process uptime by keeping water out

## Modular Mounting Configurations

- Base feet, torque arm bracket, safety covers, solid output shafts and output mounting flange

## Bronze Input and Output Shaft Bushings

- Eliminate fretting corrosion and facilitate easy shaft and motor removal
- Input and output bore flexibility reduces inventory



### Continuous, Smooth Housing

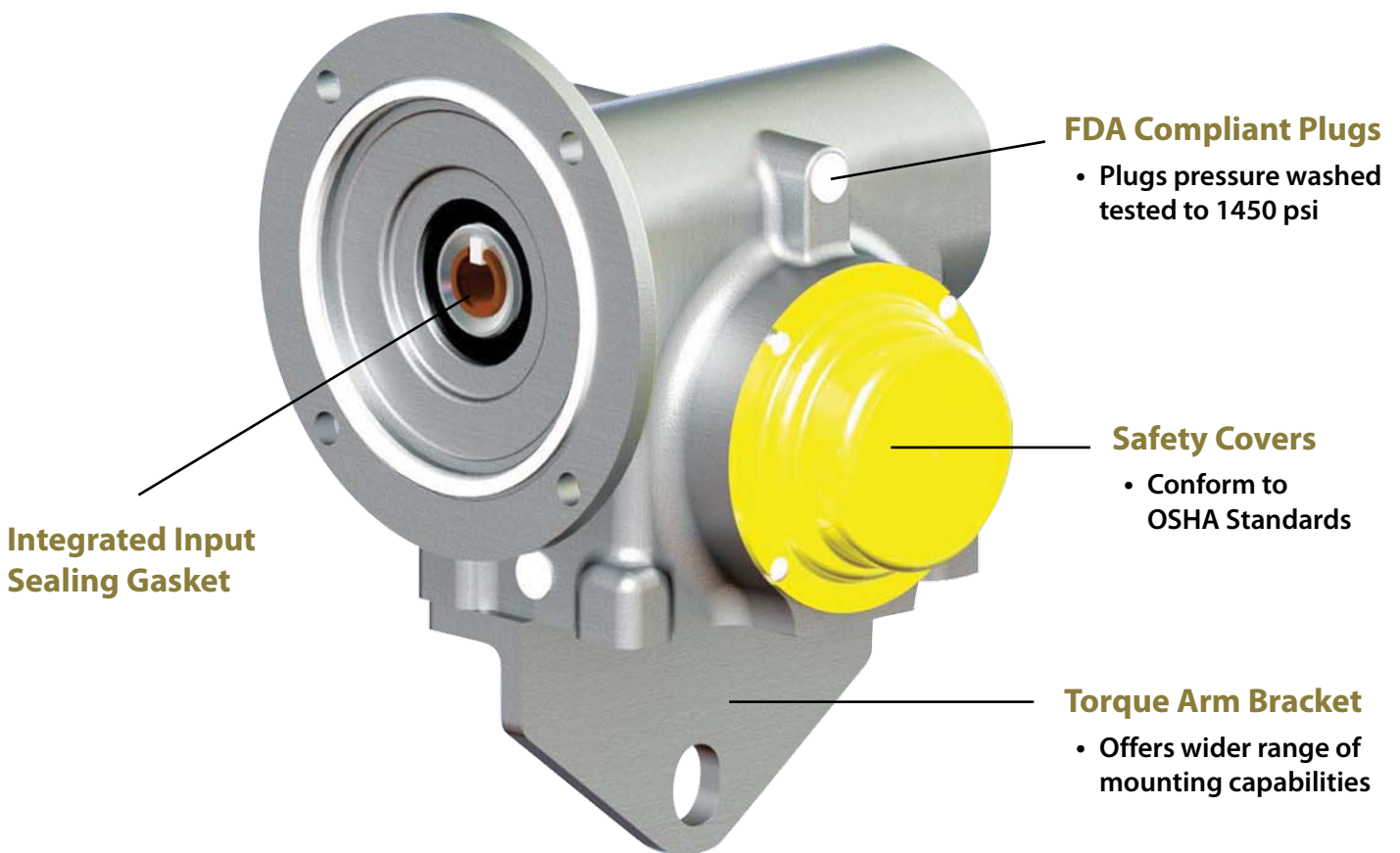
- No covers, no seams, no bolts make wash down easy and minimize the possibility for bacterial growth

### Mobil Glygoyle® 460 H1 Registered Lubricant

- Suitable for food contact

### Sealed Operation

- Superior wash down performance for meat and poultry conveyors



### Premium Efficiency Gearing

- Up to 96% efficient gearing provides affordable energy savings

### Common Industry Interchange Dimensions

- Offers complete OEM equipment and aftermarket flexibility

\*Glygoyle is a registered trademark of Exxon Mobil Corporation or one of its subsidiaries.

# IP69 K CERTIFIED

## International Protection Rating for severe wash down performance

- 176° F water and steam at 1450 psi, 4 gal/minute
- The ultimate speed reducer for meat, poultry, seafood and dairy processing

**MPSS**



**MPNS**



**MPRS**



**MDPS**



**MPTS**



**MSFS**





## IP66 CERTIFIED

### International Protection Rating for moderate wash down performance

- 100 liters/minute at 15 psi for 3 minutes
- The ideal speed reducer for nut, fruit, vegetable and beverage processing

**MDSS**



**MDNS**



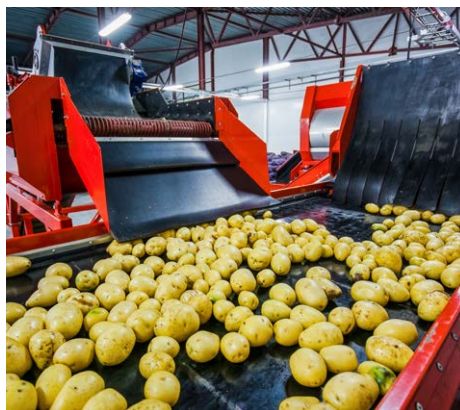
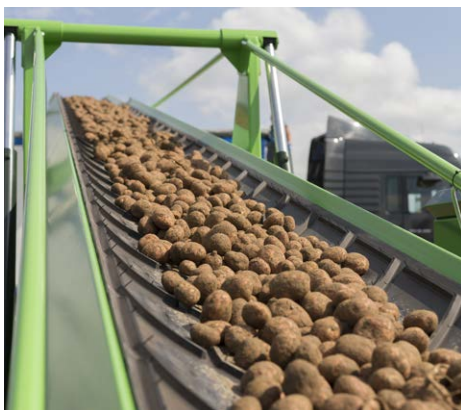
**MSRS**

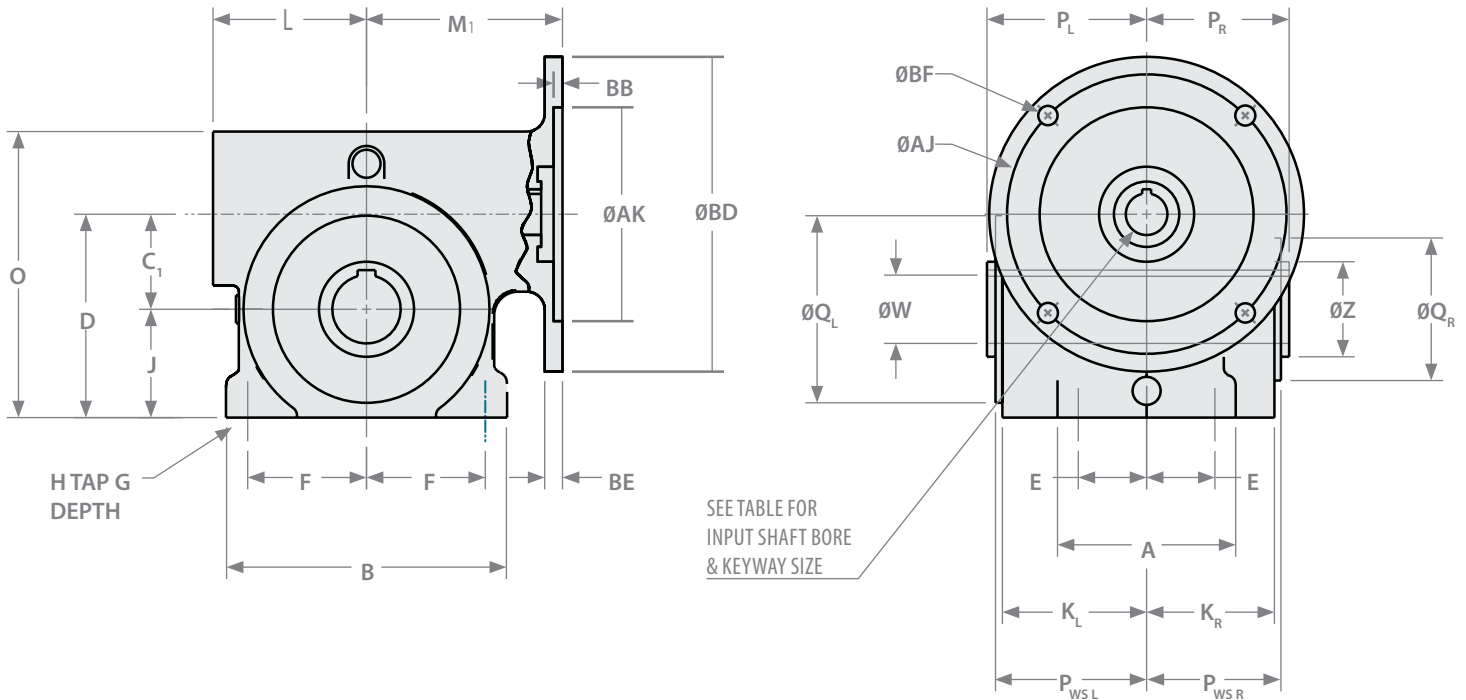


**MSTS**



**MDTS**





### SPEED REDUCER DIMENSIONS

SIZE	A	B	C <sub>1</sub>	D	E	F	G DEPTH	H TAP	J	K <sub>L</sub>	K <sub>R</sub>	L	O	P <sub>L</sub>	P <sub>R</sub>	P <sub>WSL</sub>	P <sub>WSR</sub>	Q <sub>L</sub>	Q <sub>R</sub>	R <sub>L</sub>	R <sub>R</sub>	Z		
S17	2.88	5.25	1.750	3.81	1.38	2.09	0.52	5/16-18	2.06	2.88	2.50	2.70	5.25	3.19	2.81	3.02	2.64	3.63	2.19	3.63	2.19	3.63	2.19	1.50
S20	3.75	5.89	2.000	4.28	1.44	2.50	0.75	3/8-16	2.28	3.04	2.69	3.23	6.02	3.36	3.00	3.18	2.83	3.94	3.00	3.94	3.00	3.94	3.00	2.00
S24	3.75	6.25	2.375	4.88	1.44	2.50	0.63		2.50	3.14	2.78	3.89	6.75	3.45	3.11	3.28	2.92	4.63	3.25	4.63	3.25	4.63	3.25	2.25
S26	4.50	7.50	2.625	5.56	1.69	3.19	0.69		2.94	3.31	2.81	3.82	7.38	3.63	3.13	3.45	2.95	5.25	3.50	5.25	3.50	5.25	3.50	2.50
S30	5.13	8.58	3.000	6.50	2.00	3.75	0.69	7/16-14	3.50	3.63	3.00	4.15	8.69	4.00	3.38	3.77	3.14	6.00	3.75	6.00	3.63	6.00	3.63	2.63

### QUILL INPUT ADAPTER DIMENSIONS

SIZE	M <sub>1</sub>		AJ		AK		BB		BD		BE		BF		INPUT KEYWAY	
	56C 140TC	180TC	56C 140TC	180TC	56C 140TC	180TC	56C 140TC	180TC	56C 140TC	180TC	56C 140TC	180TC	56C 140TC	180TC	56C 140TC	180TC
S17	4.19															
S20	4.13	NA														
S24	5.38		5.88	NA	4.50	NA	0.19	NA	6.63	NA	0.34	NA	0.406	NA	3/16 X 3/32	NA
S26	5.34	6.02														
S30	5.54	6.22		7.25		8.50	0.19	NA	9.00		0.68	NA	0.53	NA	1/4 X 1/8	

### INPUT SHAFT BORE

SIZE	BORE <sup>+0.001/-0.000</sup>
56C	0.6255
140TC	0.8755
180TC	1.3755

### HOLLOW OUTPUT SHAFT BORES (W)\*\*

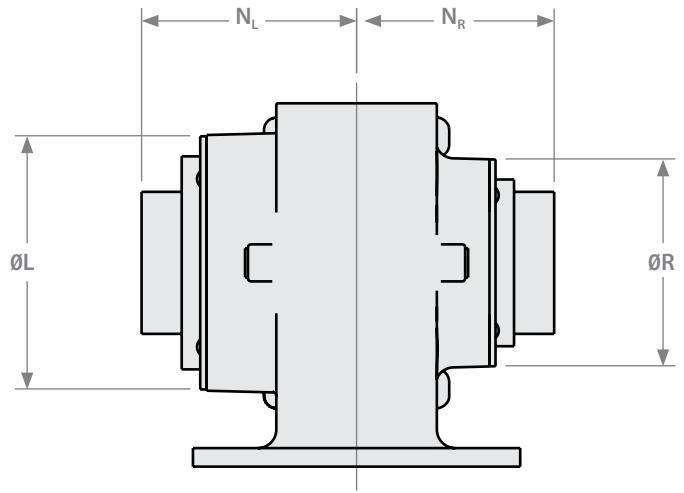
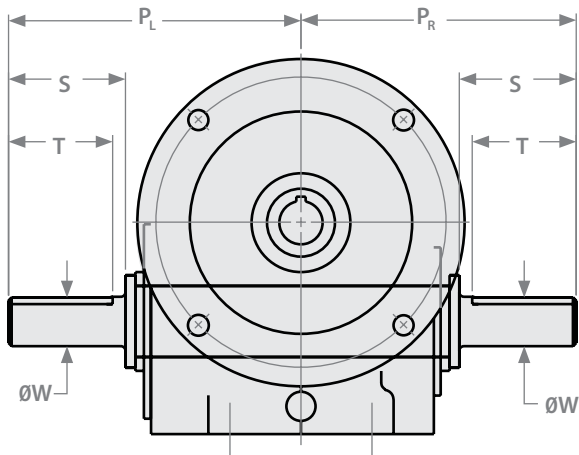
SIZE	1.000	1.188	1.250	1.438	1.500	1.688	1.938
S17	●						
S20	▲ ●	▲ ●	▲ ●	●			
S24	▲ ●	▲	▲ ●	●	●		
S26	▲ ●		▲ ●	▲	▲ ●	●	
S30			▲ ●	▲			●
OUTPUT KEYWAY	1/4 x 1/8	1/4 x 1/8	1/4 x 1/8	3/8 x 3/16	3/8 x 3/16	3/8 x 3/16	1/2 x 3/16

● = Bored to size, ▲ = Bronze bushing available  
 \* Keyway is 3/8 x 1/8 \*\* Bore Tolerance +.002/-.000

The input shaft may be driven in either direction.



All dimensions are in inches.



### SOLID OUTPUT SHAFTS

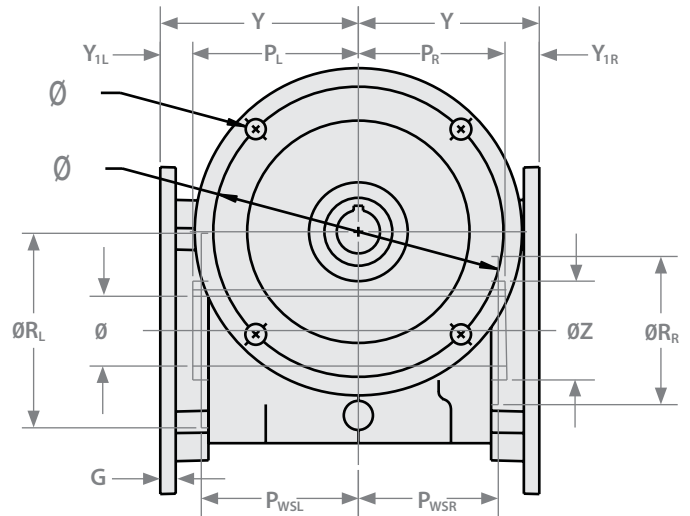
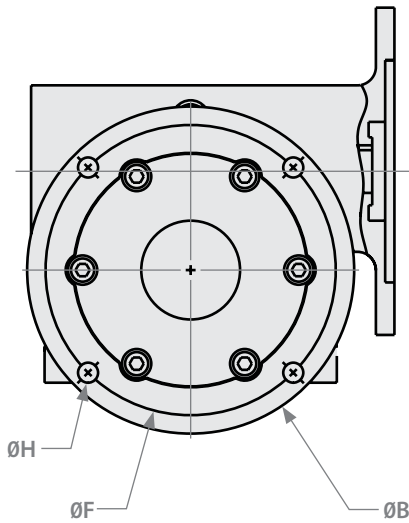
Size	P <sub>L</sub>	P <sub>R</sub>	S	T	W*	Output Keyway
S17	5.75	5.38	2.41	2.38	0.875	3/16 × 3/32
			2.52			
S20	5.92	5.57	2.375	2.27	1.000	1/4 × 1/8
S24	6.27	5.91	2.61	2.50	1.125	
			1.250			
S26	6.45	5.94	2.59	2.53	1.125	
			1.250			
S30	6.91	6.28	2.63	2.53	1.375	3/16 × 3/32

\*Shaft Diameter Tolerance: +.000/-.001

### SAFETY COVERS

Size	Cover Side	N <sub>L</sub>	N <sub>R</sub>	Ø <sub>L</sub>	Ø <sub>R</sub>	Kit #
S17	Both	4.13	3.75	4.63	3.50	CK9952710
	Left	-	-	-	-	CK9952710L
	Right	-	3.75	-	3.50	CK9952710R
S20	Both	4.35	4.00	5.13	4.19	CK9952712R
	Left	-	-	-	-	CK9952713
	Right	-	4.00	-	4.19	CK9952713L
S24	Both	4.39	4.03	5.75	4.44	CK9952713R
	Left	-	-	-	-	CK9952714
	Right	-	4.03	-	4.44	CK9952711
S26	Both	4.81	4.25	6.44	4.90	CK9952711L
	Left	-	-	-	-	CK9952711R
	Right	-	4.25	-	4.90	CK9952712
S30	Both	5.19	4.56	7.46	5.28	CK9952712L
	Left	-	-	-	-	CK9952714L
	Right	-	4.56	-	5.28	CK9952714R

\*Shaft Diameter Tolerance: +.000/-.001



### OUTPUT MOUNTING FLANGE

SIZE	B	F	G	H	P <sub>L</sub>	P <sub>R</sub>	P <sub>WSL</sub> *	P <sub>WSR</sub> *	R <sub>L</sub>	R <sub>R</sub>	Y <sub>L</sub>	Y <sub>R</sub>	Y <sub>1L</sub>	Y <sub>1</sub>
S17	6.56	5.875	0.31	0.344	3.19	2.81	3.02	2.64	3.63	2.19	3.88	3.50	3.88	3.50
S20	6.63	5.875			3.36	3.00	3.18	2.83	3.94	3.00	4.00	3.66	4.00	3.66
S24	8.41	7.500	0.38	0.406	3.46	3.09	3.28	2.92	4.63	3.25	4.14	3.78	4.14	3.78
S26	8.89	8.000			3.63	3.12	3.45	2.95	5.25	3.50	4.38	3.88	4.38	3.88
S30	10.03	9.000	0.31	0.469	4.00	3.38	3.77	3.14	6.00	3.63	4.81	4.19	4.81	4.19

\* WashTite Shield installed opposite the driven side.

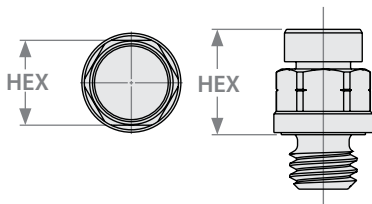
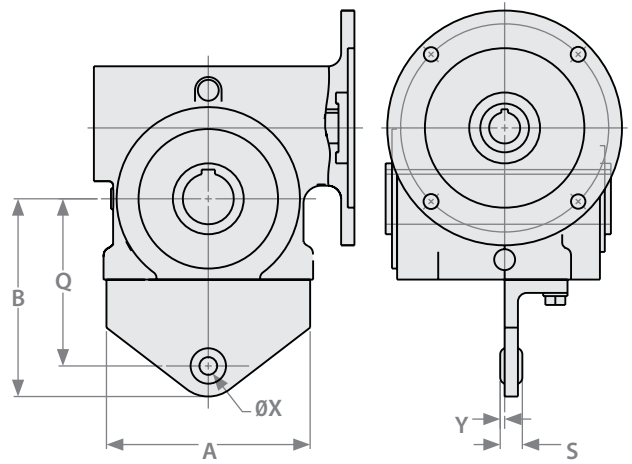
All dimensions are in inches.

# STAINLESS STEEL ACCESSORY KITS



## TORQUE ARM BRACKETS

SIZE	A	B <sub>1</sub>	Q <sub>1</sub>	S	X	Y	KIT#
S17	5.13	5.36	4.50	0.63	0.50	0.13	TK9952720
S20	5.75	5.58	4.78				TK9952721
S24	6.00	5.80	4.94				TK9952722
S26	7.25	6.24	5.38				TK9952723
S30	7.63	6.80	5.78				TK9952724



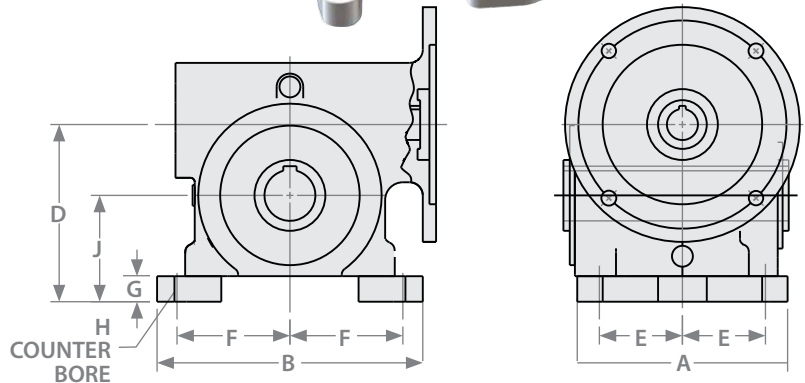
## VENT OPTION

HEIGHT	HEX	KIT #
0.59	0.50	52096



## SHAFT CLAMPING COLLARS

BORE	THK.	O.D.	KIT #
1.000	0.50	1.75	CK52228
1.188		2.06	CK52230
1.250		2.25	CK52231
1.438	0.56	2.25	CK52233
1.500		2.38	CK52234
1.688	0.69	2.75	CK52235
1.938		3.00	CK52237



## BASE FEET (TWO-PIECE) KITS

SIZE	A	B	D	E	F	G	H	J	KIT #
S17	5.63	6.88	4.50	2.25	2.88	0.69	3/8 SHCS	2.75	BK9998140
S20	5.94	7.50	5.00	2.34	3.19	0.72		3.00	BK9998141
S24	6.13	8.29	5.63	2.44	3.53	0.75	7/16 SHCS	3.25	BK9998142
S26	6.65	9.40	6.31	2.63	4.00			3.69	BK9998143
S30	7.63	11.00	7.38	3.06	4.75			0.88	4.38

SHCS = Socket Head Cap Screw.

## BRONZE HOLLOW OUTPUT SHAFT BUSHING KITS

SIZE	BUSHING I.D.**	KIT #	SIZE	BUSHING I.D.**	KIT #
S20	1.000	WKS850468	S26	1.000	WKS850627
	1.188	WKS850625		1.250	WKS850479
	1.250	WKS850469		1.438	WKS850472
S24	1.000	WKS850653	S30	1.500	WKS850473
	1.188	WKS850662		1.250	WKS850481
	1.250	WKS850470		1.438	WKS850474

\*\* Bore Tolerance  $\pm 0.002/0.000$



## BRONZE INPUT SHAFT BUSHING KIT

MOTOR FLANGE (SHAFT DIAMETER)	REDUCER INPUT ADAPTOR (BORE SIZE)	BUSHING LENGTH	KEYWAY SIZE	KIT #
56C (0.625)	140TC (0.875)	1.44	3/16 X 3/32	WK9810170



All Kits Include Mounting Hardware. | All dimensions are in inches.





## 24-HOUR SHIPPING AVAILABLE

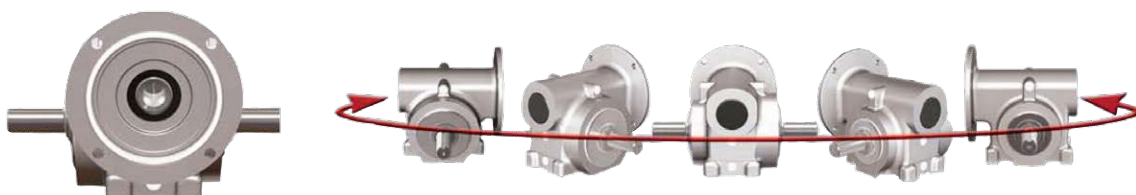
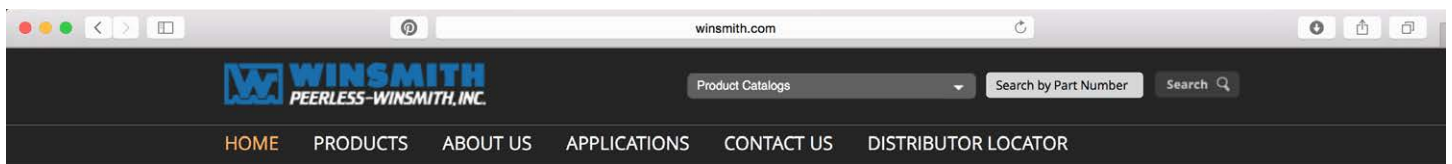


### OUTPUT MOUNTING FLANGE

CASE SIZE / CENTER DISTANCE	QUILL INPUT OPTIONS			HOLLOW OUTPUT SHAFT BORE SIZES (DIA)								
				1.000	1.188	1.250	1.438	1.500	1.688	1.938		
<b>S17</b>	1.75"	56C	140TC	56C using Bronze Bushing								
<b>S20</b>	2.00"	56C	140TC	56C using Bronze Bushing								
<b>S24</b>	2.38"	56C	140TC	56C using Bronze Bushing								
<b>S26</b>	2.62"	56C	140TC	56C using Bronze Bushing								
<b>S30</b>	3.00"	56C	140TC	56C using Bronze Bushing								
<b>Ratios</b>	5:1	10:1	15:1		20:1	25:1	30:1	40:1	50:1	60:1		

Bored-to-Size (👤) Bronze Output Bushings (👤)

## 3D LIBRARY



# RATINGS SUMMARY

## QUICK SELECT AT 1750 RPM INPUT SPEED, 1.0 SERVICE FACTOR\*

Output RPM	Ratio	MOTOR INPUT HORSEPOWER										
		0.25	0.33	0.50	0.75	1.00	1.50	2.00	3.00	5.00	7.50	10.00
350	5	S17	S17	S17	S17	S17	S17	S17	S20	S26	S26	S30
233	7.5	S17	S17	S17	S17	S17	S17	S17	S24	S26	S30	
175	10	S17	S17	S17	S17	S17	S17	S20	S24	S30		
117	15	S17	S17	S17	S17	S17	S20	S24	S26	S30		
88	20	S17	S17	S17	S17	S20	S24	S24	S30			
70	25	S17	S17	S17	S20	S20	S24	S26	S30			
58	30	S17	S17	S17	S20	S24	S26	S30				
44	40	S17	S17	S17	S24	S24	S30	S30				
35	50	S17	S17	S20	S24	S26	S30					
29	60	S17	S20	S24	S26	S30						
22	80	S24	S24	S26								
18	100	S24	S26									

## CONTINUOUS DUTY MECHANICAL RATINGS, 1.0 SERVICE FACTOR\*

Size	Ratio <sup>1</sup> Output RPM	5	7.5	10	15	20	25	30	40	50	60	80	100
		<b>1750 INPUT SPEED</b>											
S17	Input HP	2.69	2.06	1.64	1.15	0.94	0.70	0.66	0.52	0.41	0.27	0.16	0.11
	Output Torque (lbf.-in.)	462	525	554	568	604	547	596	603	558	417	311	236
	Efficiency	95	94	94	91	89	87	84	80	76	72	64	59
	Overhung Load (lbf.)**	438	438	438	438	438	438	438	438	438	438	438	438
S20	HP	3.70	2.84	2.24	1.59	1.24	1.01	0.86	0.68	0.56	0.41	0.22	0.16
	Output Torque (lbf.-in.)	639	732	769	794	806	803	788	795	791	656	437	355
	Efficiency	96	95	95	92	90	88	85	82	79	74	67	61
	Overhung Load (lbf.)**	1164	1164	1164	1164	1164	1164	1164	1164	1164	1164	1164	1164
S24	Input HP	5.89	4.54	3.67	2.71	2.11	1.61	1.45	1.11	0.92	0.70	0.38	0.27
	Output Torque (lbf.-in.)	1017	1168	1249	1359	1383	1285	1360	1335	1329	1134	735	576
	Efficiency	96	95	95	93	91	88	87	83	80	75	66	59
	Overhung Load (lbf.)**	1177	1177	1177	1177	1177	1177	1177	1177	1177	1177	1177	1177
S28	HP	7.70	5.93	4.82	3.42	2.64	2.17	1.80	1.42	1.18	0.92	0.49	0.34
	Output Torque (lbf.-in.)	1334	1533	1650	1724	1745	1758	1712	1737	1748	1556	979	767
	Efficiency	96	96	95	93	92	90	88	85	82	78	70	63
	Overhung Load (lbf.)**	1247	1257	1411	1370	1381	1397	1355	1384	1419	1457	1564	1573
S30	Input HP	10.87	8.59	7.11	5.07	3.95	3.24	2.67	2.08	1.72	1.34	0.71	0.48
	Output Torque (lbf.-in.)	1886	2232	2448	2578	2645	2676	2586	2617	2643	2367	1478	1160
	Efficiency	96	96	96	94	93	92	90	87	85	82	73	67
	Overhung Load (lbf.)**	1355	1454	1632	1832	1987	2003	1945	1986	2033	2104	2179	2179

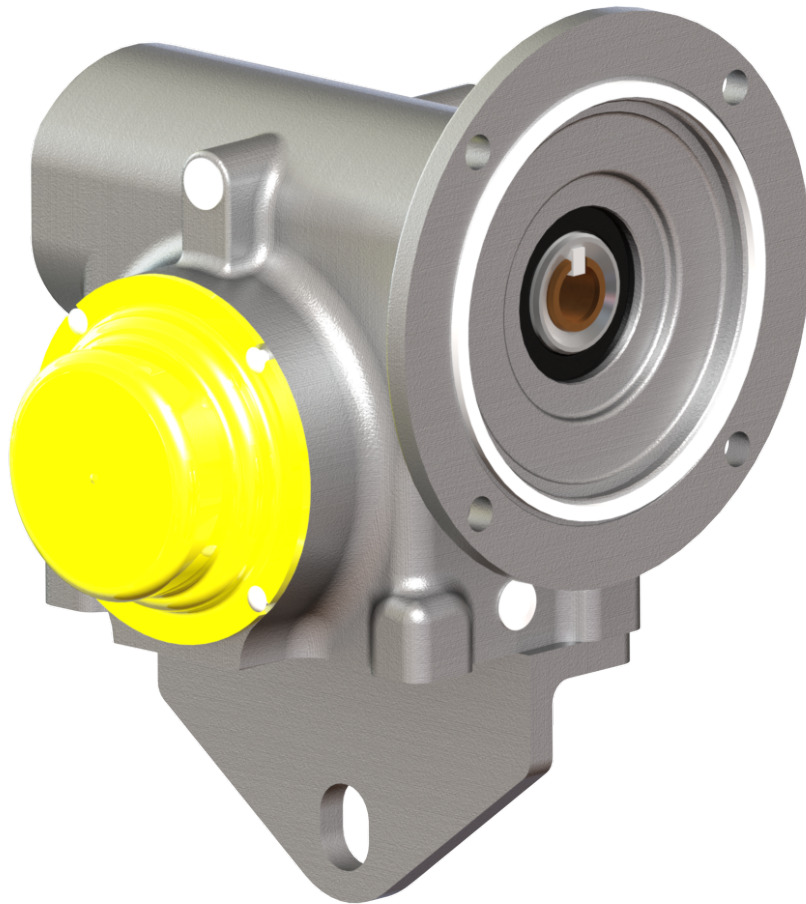
Size	Ratio <sup>1</sup> Output RPM	5	7.5	10	15	20	25	30	40	50	60	80	100
		<b>1160 INPUT SPEED</b>											
S17	Input HP	2.16	1.58	1.24	0.78	0.67	0.47	0.48	0.39	0.28	0.19	0.16	0.11
	Output Torque (lbf.-in.)	562	610	632	571	645	554	660	676	564	435	311	236
	Efficiency	96	95	93	90	88	86	84	80	75	72	64	59
	Overhung Load (lbf.)**	438	438	438	438	438	438	438	438	438	438	438	438
S20	HP	2.85	2.18	1.68	1.06	0.91	0.73	0.86	0.51	0.56	0.41	0.22	0.16
	Output Torque (lbf.-in.)	743	849	863	788	891	865	788	920	791	656	437	355
	Efficiency	96	95	94	91	90	88	85	82	79	74	67	61
	Overhung Load (lbf.)**	1164	1164	1164	1164	1164	1164	1164	1164	1164	1164	1164	1164
S24	Input HP	4.81	3.64	2.55	1.81	1.60	1.05	0.94	0.73	0.63	0.46	0.29	0.20
	Output Torque (lbf.-in.)	1263	1431	1321	1376	1611	1280	1350	1333	1421	1138	837	654
	Efficiency	97	96	95	93	93	89	88	85	83	77	67	60
	Overhung Load (lbf.)**	1177	1177	1177	1177	1177	1177	1177	1177	1177	1177	1177	1177
S28	HP	5.96	4.67	3.41	2.41	1.76	1.43	1.28	1.06	0.84	0.60	0.37	0.25
	Output Torque (lbf.-in.)	1567	1836	1770	1847	1764	1762	1864	2028	1932	1562	1126	880
	Efficiency	97	97	96	94	92	91	89	88	85	80	69	64
	Overhung Load (lbf.)**	1247	1257	1411	1370	1381	1397	1355	1384	1419	1457	1564	1573
S30	Input HP	8.75	7.11	5.31	3.35	2.70	2.19	1.95	1.59	1.29	0.88	0.54	0.37
	Output Torque (lbf.-in.)	2303	2802	2768	2580	2745	2749	2891	3101	3057	2381	1735	1356
	Efficiency	97	97	96	94	93	92	91	90	87	83	74	67
	Overhung Load (lbf.)**	1355	1454	1632	1832	1987	2003	1945	1986	2033	2104	2179	2179

<sup>1</sup>Nominal Ratio. Reference SE Encore Series Catalog for exact ratio.

\*For thermal ratings below 1750 RPM input speed, please contact Winsmith.

\*\*Overhung load is given at a distance equal to one shaft diameter from the face of the output seal





---

HBD Industries Inc. and its subsidiaries cannot accept responsibility for possible errors in catalogues, brochures, other printed materials, and website information, and may change, delete, add to or otherwise modify such information without notice. HBD reserves the right to alter its products without notice, including products already on order, provided that such alteration can be made without changes being necessary in specifications already agreed to. All trademarks in this material are the property of the HBD Industries Inc., or its subsidiaries. The HBD and HBD brands logotype, are trademarks of HBD Industries Inc. All rights reserved.

---

DISTRIBUTED BY:

HBD/WINSMITH, INC.  
172 EATON STREET  
SPRINGVILLE, NY  
14141-1197 USA  
TEL: 1 (716) 592-9310  
TEL: 1 (716) 592-9546  
[www.winsmith.com](http://www.winsmith.com)